



Enrollment Report

Spring Semester 2001

Report Day - January 22, 2001

Carol Taberski, Registrar, Interim Director of Admissions
Nancy McArthur, Records/Registration Technician

Spring Semester 2001
Report Day – January 22, 2001

Table of Contents

Summary	1
Academic Enrollment Report	2
Office of Admissions - Final report	3
TouchTone Registration.....	4
Web Registration	4
Dual Enrollment Registration Chart	4
Spring Enrollment by Residency Chart.....	5
Spring Enrollment by Gender Chart	5
Spring Enrollment by Enrollment Status Chart	5
Traverse City Campuses Credit Hrs Generated	6
Spring Credit Hours Generated Chart	7
Traverse City Campuses Contact Hrs Generated	8
Spring Contact Hours Generated Chart	9
School Year - Traverse City Campuses Credit Hrs Generated	10
School Year - Credit Hours Generated Chart	11
School Year - Traverse City Campuses Contact Hrs Generated.....	12
School Year - Contact Hours Generated Chart	13
Cadillac Campus Credit Hours Generated	14
Cadillac Campus Contact Hours Generated.....	15
Cadillac Campus Credit and Contact Hours Chart	16
Cadillac Campus Enrollment Chart	17

Spring Semester 2001

Enrollment Report

Summary

Northwestern Michigan College has shown steady increases in enrollment each Spring semester since 1997. Spring 2001 head count shows an increase of 0.39 percent which brings it to 3865. Credit hours have increased each spring since 1997 with a 0.65 percent increase. The credit hours are 34980.3. Contact hours showed a very slight decrease, down from 38469 in Spring 2000 to 38443.3 this Spring, a decrease of 0.07 percent. See page 2. Spring enrollments are consistently lower than fall enrollments. The drop in enrollment between semesters in the past seven years has been from 2.7 and 5.8 percent, with this past spring dropping 5.2 percent from fall enrollments.

The number of students taking 12 or more credits increased by 3.5 percent. The number of students taking fewer than six credits increased by over five percent. A decrease was in the students taking 11-6 credits, a 6.7 percent decrease.

The Traverse City campuses show increases in head count and credit hours but a decrease in contact hours. Cadillac numbers were consistent with fall counts with head count down to 202, a decrease of 9.42 percent. Credit hours and contact hours were up over two percent. The physical education classes more than doubled in enrollment from one year ago which accounts for the majority of increase in contact hours. Twenty-four percent of Cadillac students are also taking classes in Traverse City.

The number of applications received rose to 907, an increase of 1.34 percent. The number of students admitted, 604, was an increase of 3.1 percent. All enrollment numbers went up: dual enrollment, special enrollment, co-enrollment, former dual enrollment students who enrolled after high school, and guest enrollment. See page 3.

Enrollment percentage changes for community colleges around the state can be found at <http://www.macrao.org/ccweekly.asp>. No consistent explanations were gathered as to why some community colleges had large increases.

The disciplines on main campus with the largest increases in credit hours were Aviation with almost a 17 percent increase. Humanities increased by over six percent and Social Science increased by over five percent. The largest decreases in credit hours on main campus were in the Technical discipline with over a thirteen percent decrease, Health Occupations discipline had a twelve percent decrease, and physical education had over an eight percent decrease.

Combining Fall 2000 and Spring 2001 enrollments, the disciplines with the largest increases in credit hours are Maritime with over six percent, Social Science with over three percent, and Humanities with over two percent increase. The disciplines with the largest decreases in credit hours for combined Fall 2000 and Spring 2001 are Technical with over fourteen percent, Health Occupation with over twelve percent, and Physical Education with over eight percent.

The Traverse City campuses consist of main campus, Maritime/west bay campus, virtual, Special Enrollment which takes place at the Traverse Bay Area Career Tech Center, and Aeropark/M-TEC campus. None of the campuses are dedicated to just one discipline for choice of classes.

Academic Enrollment Report

Spring Report Day

ALL LOCATIONS

	Spring 1995	Spring 1996	Spring 1997	Spring 1998	Spring 1999	Spring 2000	Spring 2001	% Change
Total Enrolled	3707	3821	3762	3788	3838	3850	3865	0.39%
Credit Hours	32508	32932.1	32824.7	33020	33747.6	34755	34980.3	0.65%
Contact Hours	36664	37051.6	36659.7	36672	37327.6	38469	38443.3	-0.07%
Average Load	8.77	8.62	8.73	8.72	8.79	9.03	9.05	0.25%
STUDENT:								
Full-Time	1410	1221	1373	1377	1400	1484	1536	3.50%
6-11 Credits	1183	1233	1209	1234	1306	1343	1253	-6.70%
1-5 Credits	1114	1367	1180	1177	1132	1023	1076	5.18%
Gender								
Males	1564	1637	1552	1582	1606	1593	1598	0.31%
Females	2137	2173	2205	2191	2231	2257	2266	0.40%
Residence								
G.T. Residents	2130	2212	2108	2062	2025	1938	1986	2.48%
Service Area	1027	1059	1064	1119	1212	1268	1216	-4.10%
Other Counties	474	471	489	524	527	565	574	1.59%
Out-Of-State	62	58	83	60	55	55	60	9.09%
Foreign	14	21	18	23	19	24	21	-12.50%
VLC - In District							6	100.00%
VLC - Out of District							2	100.00%
VLC - Out-Of-State								
Mean Age	27.6	27.3	26.85	27.33	26.96	26.55	26.28	-1.02%

TRAVERSE CITY CAMPUSES

	Spring 1995	Spring 1996	Spring 1997	Spring 1998	Spring 1999	Spring 2000	Spring 2001	
*Total Enrolled	3533	3656	3631	3596	3677	3673	3712	1.06%
Credit Hours	31158	31627.1	31758.7	31471	32323.6	33225	33419.3	0.58%
Contact Hours	35279	35683.6	35530.7	35051.3	35845.6	36891	36826.3	-0.18%
Average Load	8.82	8.65	8.75	8.75	8.79	9.05	9.00	-0.47%

CADILLAC CAMPUS

	Spring 1995	Spring 1996	Spring 1997	Spring 1998	Spring 1999	Spring 2000	Spring 2001	
*Total Enrolled	189	182	147	207	204	223	202	-9.42%
Credit Hours	1350	1305	1069	1531	1424	1530	1561	2.03%
Contact Hours	1385	1368	1129	1594	1482	1578	1617	2.47%
Average Load	7.14	7.17	7.27	7.40	6.98	6.86	7.73	12.63%

*Some students register for classes on more than one campus. They are represented in each campus count with an up-duplicated count in ALL LOCATIONS.

Office of Admissions - Final Report Spring Semester 2001			
	2000	2001	% Change
APPLICATIONS RECEIVED	895	907	+ 1.34
APPLICATION TYPE:			
<i>First Time in any College (FTIAC)</i>	457	497	+ 8.8
<i>Dual Enrollment</i>	74	81	+ 9.5
<i>Co-Enrolled</i>	13	14	+ 7.7
<i>Special Enrollment Option</i>	11	20	+ 81.9
<i>Former Dual Enrollment (New)</i>	10	22	+ 120.0
<i>Transfer</i>	345	307	- 11.0
<i>Guest</i>	9	16	+ 77.8
ADMISSION STATUS			
<i>Regular Admission</i>	843	853	+ 1.19
<i>Limited Admission</i>	11	23	+ 109.1
<i>Pending Admission</i>	37	30	- 18.9
<i>Denied Admission</i>	0	0	-
<i>Cancelled Admission (student initiated)</i>	4	1	- 75.0
NUMBER REGISTERED	586	604	+ 3.1
COMMENTS:			
<i>% Applicants admitted</i>	95.4	96.6	+ 1.2
<i>% Applicants FTIAC</i>	51.1	54.8	+ 3.7
<i>% Applicants transferred to NMC</i>	38.5	33.8	- 4.7
YIELD - Total Apps to Enrolled	65.5	66.6	+ 1.1
YIELD - Admits to Enrolled	68.6	68.9	+ .3

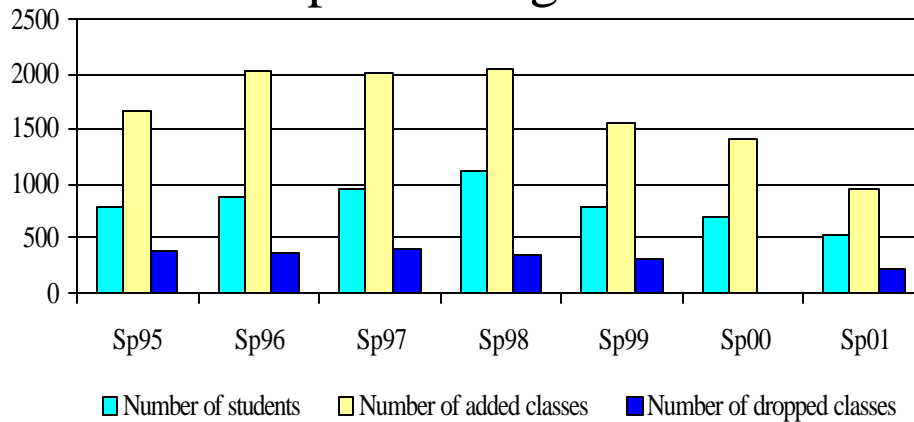
Telephone and Web Registration

Spring Semester 2001

Spring 2001 was the second semester web registration was widely publicized. Although the numbers were not high, there were 358 people using the service. Spring semester was the first semester students could use the web to make credit card payments for classes and 95 students did so.

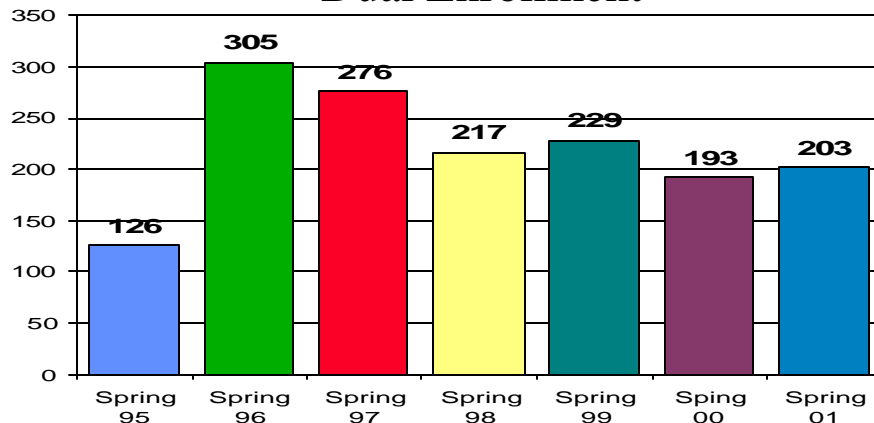
Telephone registration usage declined since last spring semester. This could be attributed to the increase in web registration. Web and telephone registration are available 24 hours a day, seven days a week from November 13 until the day before the individual sessions begin.

Telephone Registration



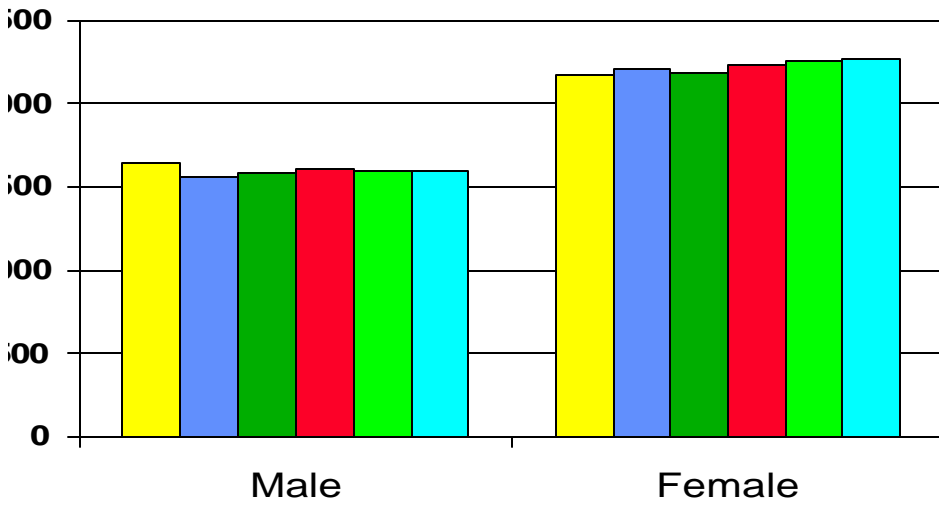
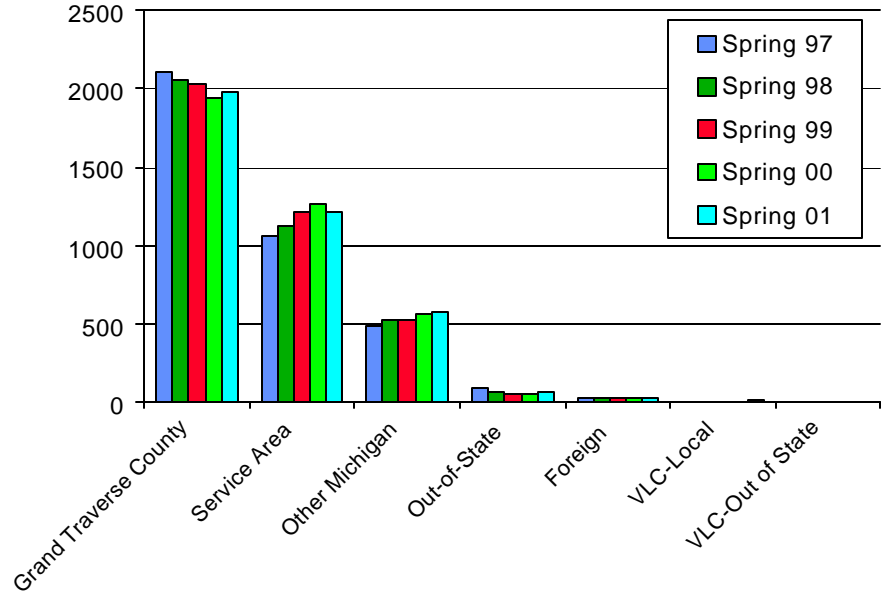
Dual Enrollment, the ability for high school students to take college classes and receive credit for high school and college at no cost to the student, remains consistent over the past four years.

Dual Enrollment



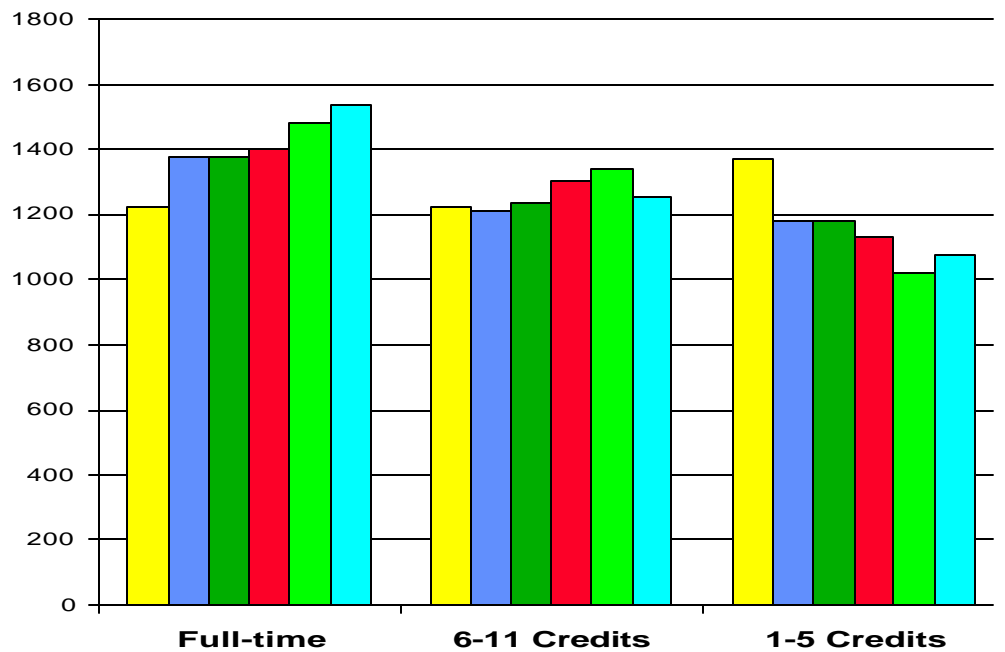
Spring 2001

By Residency



By Gender

By Enrollment Status

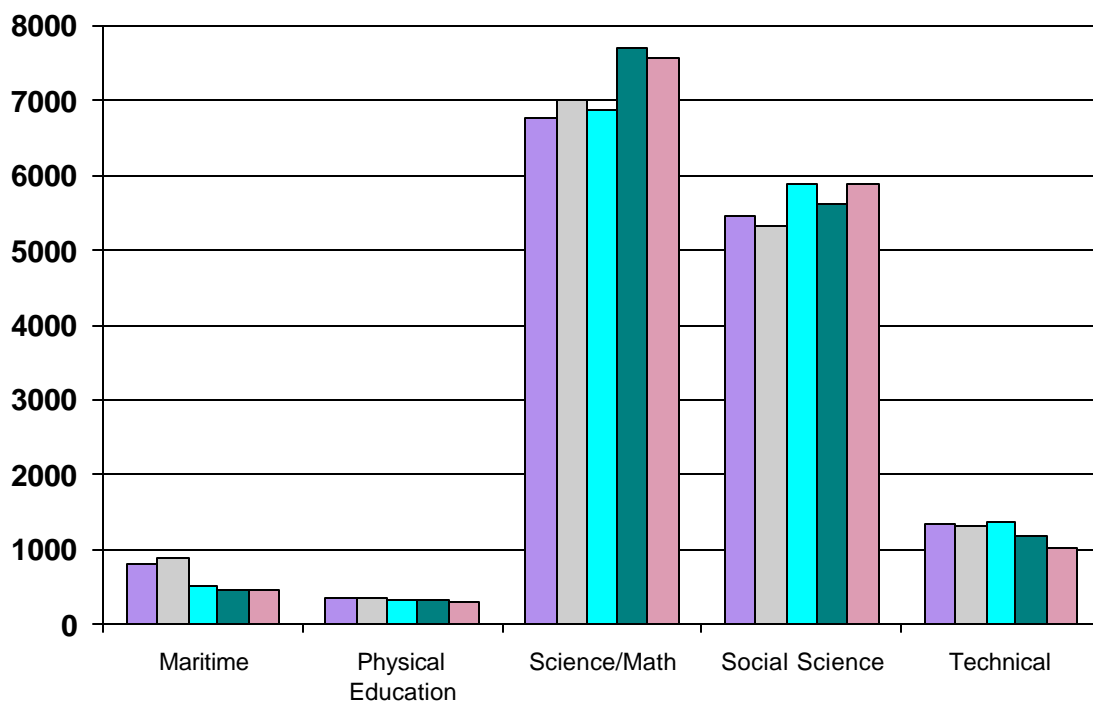
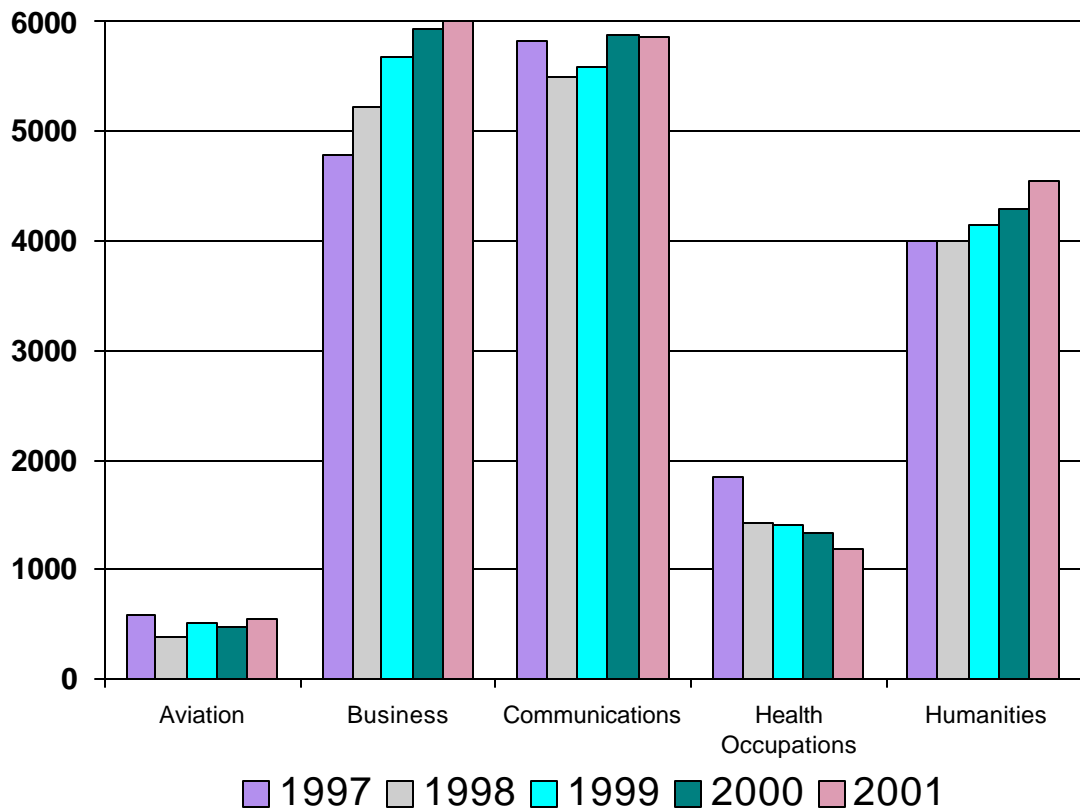


Report Day Enrollments
 Traverse City Campuses Credit Hours Generated

	Spring 95	Spring 96	Spring 97	Spring 98	Spring 99	Spring 00	Spring 01	% Change
AVF	196	260	218	136	205	184	179	-2.72%
AVG	315	359	355	236	289	282	366	29.79%
Aviation	511	619	573	372	494	466	545	16.95%
ACC	1091	1060	891	1068	979	977	1048	7.27%
BFI	0	16	0	16	0	0	0	0.00%
BPD	0	0	0	37.5	49.5	80	52	-35.00%
BUS	798	769	862	747	750	792	885	11.74%
CIS	1208	1341	1411	1615	1962	1984	2022	1.92%
MGT	318	291	295	216	411	363	375	3.31%
MKT	231	210	232	189	156	243	249	2.47%
OIS	1021	948	743	884	774	758	735	-3.03%
PAR	(moved from Soc Science)			103	140	152	153	0.66%
RSM	288	339	342	356	460	580	492	-15.17%
Business	4955	4974	4776	5231.5	5681.5	5929	6011	1.38%
COM	308	301	404	352	412	428	434	1.40%
ENG	4208	4445	4765	4509	4542	4653	4820	3.59%
MLA	120	157	157	90	0	84	0	-100.00%
MLF	0	40	46	40	64	72	80	11.11%
MLG	110	0	44	32	32	68	48	-29.41%
MLJ	0	60	12	0	0	0	0	0.00%
MLR	84	0	0	0	0	0	0	0.00%
MLS	213	202	321	273	284	360	244	-32.22%
THR	62	128	70	209	256	222	223	0.45%
Comm	5105	5333	5819	5505	5590	5887	5849	-0.65%
HAH	190	187	144	113	148	83	72	-13.25%
HDA	294	247	317	295	267	274	249	-9.12%
HMA	159	230	186	134	120	134	73	-45.52%
HNR	1561	1433	1187	882	864	833	772	-7.32%
HPD	0	4	0.7	0.5	7.1	11	8.8	-20.00%
Health Occ	2204	2101	1834.7	1424.5	1406.1	1335	1174.8	-12.00%
ART	1232	1069	1181	1256	1291	1267	1363	7.58%
DNC	28	29	30	26	26	22	33	50.00%
HST	513	763	901	818	857	855	977	14.27%
HUM	120	129	123	108	126	218	255	16.97%
MUS	577	573	698	604	600	575	570	-0.87%
PHL	538	701	851	928	800	898	1029	14.59%
VCA	220	234	212	260	442	450	321	-28.67%
Hum	3228	3498	3996	4000	4142	4285	4548	6.14%
MDK	359	453	601	584	320	308	346	12.34%
MNG	192	211	199	251	205	141	97	-31.21%
MNS	18	18	22	52	8	4	20	400.00%
Maritime	569	682	822	887	533	453	463	2.21%
HF	192.5	123	176	178	163	167	174	4.19%
OUT	70	88	90	73	72	61	52	-14.75%
PE	126.5	140	102	113	108	114	86	-24.56%
Phys Ed	389	351	368	364	343	342	312	-8.77%
AST	107	96	80	76	108	92	116	26.09%
BIO	1609	1532	1709	1470	1489	1503	1651	9.85%
CHM	776	734	638	709	530	701	508	-27.53%
EGR	189	201	198	164	135	201	177	-11.94%
ENV	245	312	238	386	400	448	416	-7.14%
MTH	3500	3601	3617	2923	3951	4398	4376	-0.50%
PHY	400	353	286	283	249	366	332	-9.29%
Sci/Math	6826	6829	6766	7011	6862	7709	7576	-1.73%
CD	290	280	365	441	401	482	434	-9.96%
CJ	286	244	224	139	184	149	222	48.99%
COR	0	441	168	99	339	126	243	92.86%
ECO	444	456	441	600	621	585	597	2.05%
EDU	88	92	76	84	84	65	78	20.00%
GEO	227	202	171	181	216	82	88	7.32%
LWE	405	381	318	309	390	307	430	40.07%
PAR	202	144	190	(moved to Business)				
PLS	1097	996	954	1089	1110	1134	1149	1.32%
PSY	1538	1598	1668	1576	1652	1802	1697	-5.83%
SDC	90	87	87	59	69	49	52.5	7.14%
SOC	962	592	711	651	747	773	813	5.17%
SWK	109	165	80	112	85	63	97	53.97%
Soc Sci	5738	5678	5453	5340	5898	5617	5900.5	5.05%
AUT	434	476	283	381	332	337	296	-12.17%
EET	266	246	196	170	210	176	125	-28.98%
MFG	845	745	807	718	732	587	511	-12.95%
TPD	0	0	0	0	4	4	0	-100.00%
WPT	88	96	65	67	96	98	108	10.20%
Technical	1633	1563	1351	1336	1374	1202	1040	-13.48%
Campus Total	31158	31628	31758.7	31471	32323.6	33225	33419.3	0.58%

Spring Credit Hours Generated

Traverse City Campuses

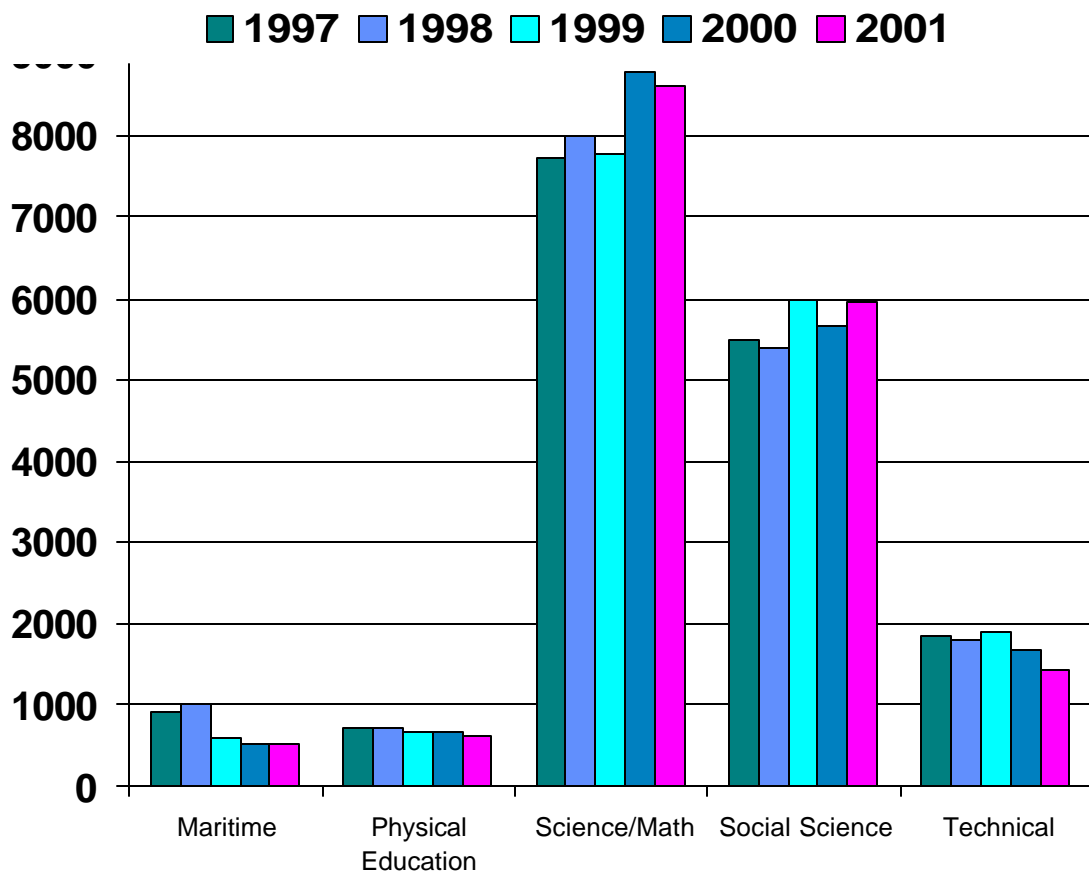
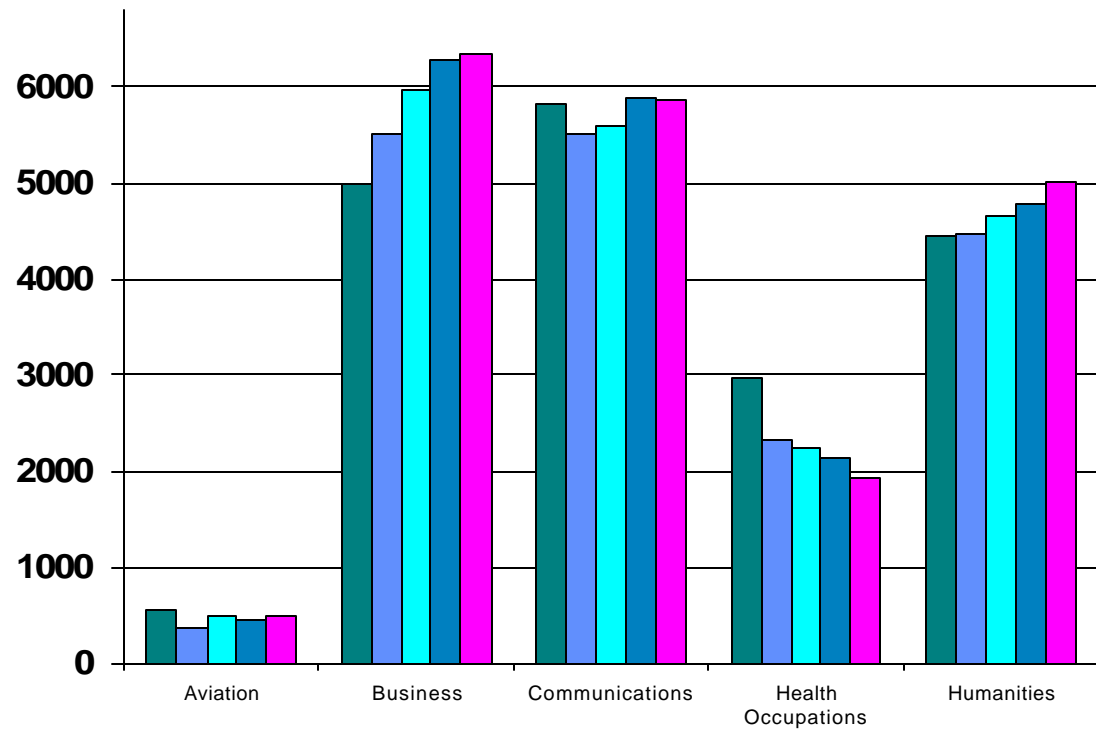


Report Day Enrollments
Traverse City Campuses Contact Hours Generated

	Spring 95	Spring 96	Spring 97	Spring 98	Spring 99	Spring 00	Spring 01	% Change
AVF	196	260	218	136	205	184	179	-2.72%
AVG	315	359	355	236	289	282	318	12.77%
Aviation	511	619	573	372	494	466	497	6.65%
ACC	1091	1060	891	1068	979	977	1048	7.27%
BFI	0	16	0	16	0	0	0	0.00%
BPD	0	0	0	37.5	49.5	80	52	-35.00%
BUS	798	769	862	747	750	792	885	11.74%
CIS	1208	1341	1411	1615	1962	1984	2022	1.92%
MGT	318	291	295	216	411	363	375	3.31%
MKT	231	210	232	189	156	243	249	2.47%
OIS	1117	1020	819	972	830	822	844	2.68%
PAR	(moved from Social Science)			103	140	152	153	0.66%
RSM	365	457	466	544	686	858	704	-17.95%
Business	5128	5164	4976	5507.5	5963.5	6271	6332	0.97%
COM	308	301	404	352	412	428	434	1.40%
ENG	4208	4445	4765	4509	4542	4653	4820	3.59%
MLA	120	157	157	90	0	84	0	-100.00%
MLF	0	40	46	40	64	72	80	11.11%
MLG	110	0	44	32	32	68	48	-29.41%
MLJ	0	60	12	0	0	0	0	0.00%
MLR	84	0	0	0	0	0	0	0.00%
MLS	213	202	321	273	284	360	244	-32.22%
THR	62	128	70	209	256	222	223	0.45%
Comm	5105	5333	5819	5505	5590	5887	5849	-0.65%
HAH	199	187	146	113	150	86	83	-3.49%
HDA	339	285	374	334	310	321	285	-11.21%
HMA	159	230	186	134	120	134	73	-45.52%
HNR	2951	2743	2273	1742	1654	1599	1482	-7.32%
HPD	0	4	0.7	0.5	7.1	11	8.8	-20.00%
Health Occ	3648	3449	2979.7	2323.5	2241.1	2151	1931.8	-10.19%
ART	1472	1290	1460	1497	1555	1527	1615	5.76%
DNC	56	55	60	52	52	44	63	43.18%
HST	513	763	901	818	857	855	977	14.27%
HUM	120	129	123	108	126	218	255	16.97%
MUS	633	624	767	684	669	641	638	-0.47%
PHL	538	701	851	928	800	898	1029	14.59%
VCA	292	312	282	344	589	600	427	-28.83%
Hum	3624	3874	4444	4431	4648	4783	5004	4.62%
MDK	420	541	664	663	353	340	393	15.59%
MNG	240	272	250	288	243	174	115	-33.91%
MNS	18	18	22	52	8	4	20	400.00%
Maritime	678	831	936	1003	604	518	528	1.93%
HF	366	241	343	350	326	334	348	4.19%
OUT	140	176	180	146	144	122	104	-14.75%
PE	253	279	204	226	216	228	172	-24.56%
Phys Ed	759	696	727	722	686	684	624	-8.77%
AST	133	120	100	95	135	115	145	26.09%
BIO	2072	1954	2154	1873	1892	1920	2118	10.31%
CHM	1078	1029	893	978	733	974	705	-27.62%
EGR	210	223	214	177	150	218	196	-10.09%
ENV	305	386	296	479	500	560	523	-6.61%
MTH	3500	3655	3685	4005	4017	4508	4467	-0.91%
PHY	538	473	384	376	330	488	452	-7.38%
Sci/Math	7836	7840	7726	7983	7757	8783	8606	-2.02%
CD	290	280	365	441	401	482	434	-9.96%
CJ	286	244	224	139	184	149	222	48.99%
COR	0	441	168	99	339	126	243	92.86%
ECO	444	456	441	600	621	585	597	2.05%
EDU	88	138	114	126	126	97	116	19.59%
GEO	256	233	185	203	240	101	110	8.91%
LWE	405	381	318	309	390	307	430	40.07%
PAR	202	144	190	(moved to Business)				
PLS	1097	996	954	1089	1110	1134	1149	1.32%
PSY	1538	1598	1668	1576	1652	1802	1697	-5.83%
SDC	90	87	87	59	69	49	52.5	7.14%
SOC	962	592	711	651	747	773	813	5.17%
SWK	109	165	80	112	85	63	97	53.97%
Soc Scienc	5767	5755	5505	5404	5964	5668	5960.5	5.16%
AUT	546	590	365	465	428	435	370	-14.94%
EET	378	369	292	255	305	264	182	-31.06%
MFG	1167	1020	1089	977	1010	824	726	-11.89%
TPD	0	0	0	0	8	8	0	-100.00%
WPT	132	144	99	103	147	149	168	12.75%
Technical	2223	2123	1845	1800	1898	1680	1446	-13.93%
Campus Total	35279	35684	35530.7	35051	35845.6	36891	36778.3	-0.31%

Spring Contact Hours Generated

Traverse City Campuses

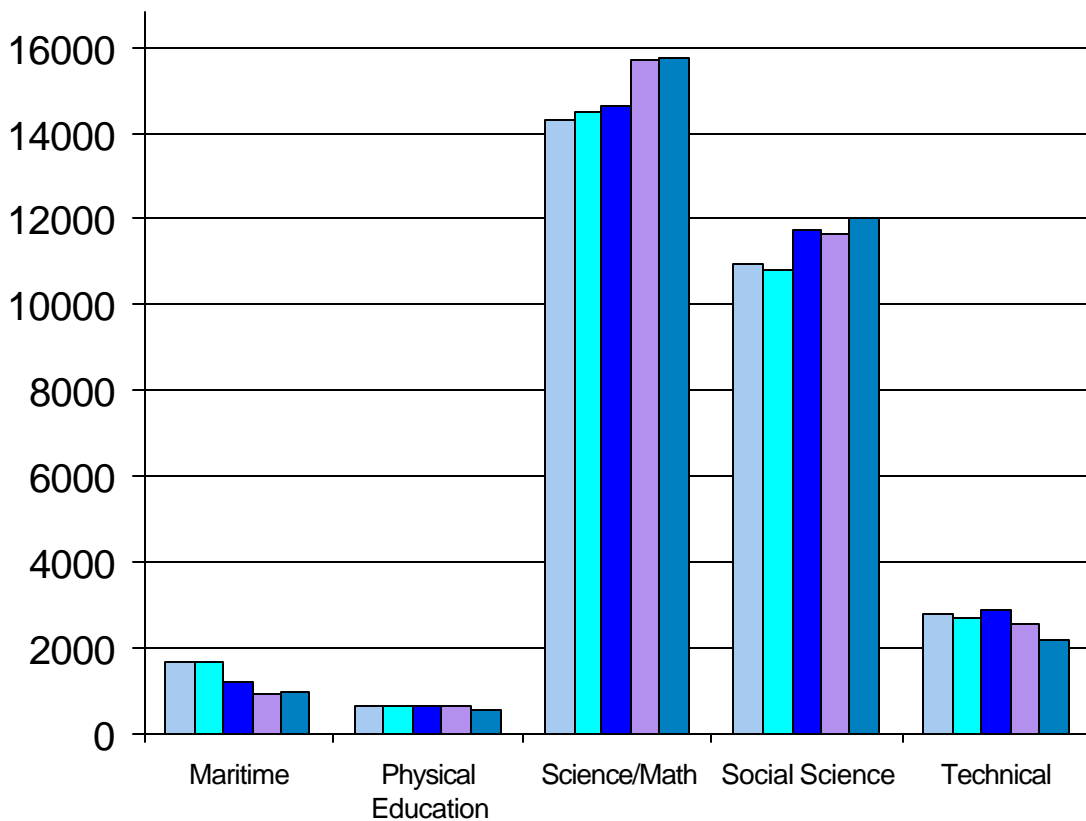
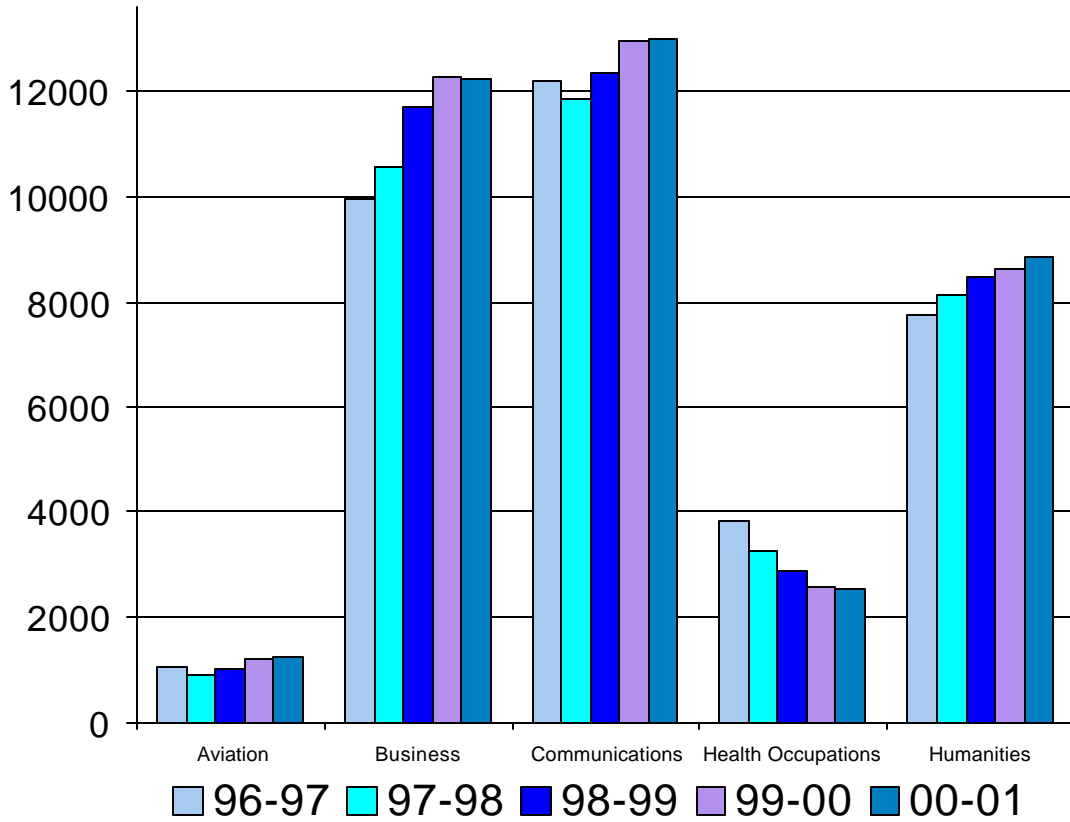


YEAR CREDIT HOURS GENERATED (Fall and Spring)

	94-95	95-96	96-97	97-98	98-99	99-00	00-01	% Change
AVF	493	506	473	347	439	483	456	-5.59%
AVG	638	674	614	557	584	742	793	6.87%
Aviation	1131	1180	1087	904	1023	1225	1249	1.96%
ACC	2336	2219	2104	2227	2191	2138	2280	6.64%
BPD	0	0	0	0	0	0	0	0.00%
BFI	0	18	0	30	0	45	64	42.22%
BPD	0	0	0	37.5	80.5	80	52	-35.00%
BUS	1689	1666	1765	1659	1674	1767	1782	0.85%
CIS	2264	2514	2758	2962	3642	3833	3884	1.33%
MGT	672	597	577	444	651	662	696	5.14%
MKT	452	372	373	375	327	483	513	6.21%
OIS	2068	2021	1590	1711	1747	1672	1541	-7.83%
PAR	(moved from Social Science)			327	365	340	368	8.24%
RSM	823	854	768	762	1006	1231	1054	-14.38%
Business	10304	10261	9935	10534.5	11683.5	12251	12234	-0.14%
COM	603	619	735	760	832	860	884	2.79%
ENG	8787	9364	9890	9396	9895	10333	10699	3.54%
MLA	342	452	453	359	96	233	0	-100.00%
MLF	76	160	98	140	156	140	216	54.29%
MLG	260	0	104	139	112	136	188	38.24%
MLJ	3	130	44	0	0	0	0	0.00%
MLR	84	0	0	0	0	0	0	0.00%
MLS	542	538	651	683	724	808	580	-28.22%
THR	142	227	214	336	506	414	419	1.21%
Comm	10839	11490	12189	11813	12321	12924	12986	0.48%
HAH	357	386	354	285	327	269	266	-1.12%
HDA	541	408	508	559	527	517	417	-19.34%
HMA	262	324	335	224	195	240	102	-57.50%
HNR	2913	2668	2640	2186	1838	1846	1706	-7.58%
HPD	0	14.5	2.5	0.6	19.2	20	30.3	51.50%
Health Occ	4073	3800.5	3839.5	3254.6	2906.2	2892	2521.3	-12.82%
ART	2680	2180	2315	2529	2764	2669	2808	5.21%
DNC	64	53	56	64	48	52	77	48.08%
HST	1003	1349	1617	1718	1778	1849	1875	1.41%
HUM	216	234	231	213	246	448	462	3.13%
MUS	1190	1104	1405	1254	1260	1101	1144	3.91%
PHL	900	1500	1653	1710	1642	1777	1895	6.64%
VCA	530	515	441	640	739	735	558	-24.08%
Hum	6583	6935	7718	8128	8477	8631	8819	2.18%
MDK	778	998	1233	1153	765	616	610	-0.97%
MNG	409	343	409	493	418	262	297	13.36%
MNS	32	32	68	56	54	32	64	100.00%
Maritime	1219	1373	1710	1702	1237	910	971	6.70%
HF	224.5	232.5	299	300	307	282	294	4.26%
OUT	131	153	165	128	132	134	105	-21.64%
PE	225.5	248	171	185	185	198	163	-17.68%
Phys Ed	581	633.5	635	613	624	614	562	-8.47%
AST	235	196	200	196	232	224	244	8.93%
BIO	3270	3210	3324	2980	3169	3159	3245	2.72%
CHM	1730	1524	1467	1491	1250	1375	1156	-15.93%
EGR	406	416	406	354	334	413	398	-3.63%
ENV	570	676	534	602	744	808	760	-5.94%
MTH	7495	7737	7719	7246	8369	9034	9244	2.32%
PHY	836	773	646	638	543	692	703	1.59%
Sci/Math	14542	14532	14296	14507	14641	15705	15750	0.29%
CD	470	467	737	826	799	797	762	-4.39%
CJ	654	529	429	99	404	341	491	43.99%
COR	0	441	168	408	510	282	243	-13.83%
ECO	981	981	957	1152	1176	1197	1185	-1.00%
EDU	180	174	152	188	156	139	156	12.23%
GEO	428	397	366	310	429	424	403	-4.95%
LWE	725	702	580	566	669	633	732	15.64%
PAR	492	491	488	(moved to Business)				
PLS	2356	2076	2013	2187	2307	2367	2415	2.03%
PSY	3227	3130	3040	3115	3354	3478	3531	1.52%
SDC	423	395	390	351	398.5	368.5	362	-1.76%
SOC	1623	1198	1398	1312	1290	1427	1452	1.75%
SWK	190	293	246	265	247	213	293	37.56%
Soc Sci	11749	11274	10964	10779	11739.5	11666.5	12025	3.07%
AUT	845	923	614	661	743	748	505	-32.49%
EET	533	471	412	352	414	367	288	-21.53%
MFG	1712	1663	1643	1508	1538	1243	1194	-3.94%
TPD	0	0	0	0	4	7	0	-100.00%
WPT	176	156	121	165	168	189	192	1.59%
Technical	3266	3213	2790	2686	2867	2554	2179	-14.68%
Campus Total	64287	64692	65163.5	64921.1	67519.2	69372.5	69296.3	-0.11%

Credit Hours Generated

School year (Fall and Spring)



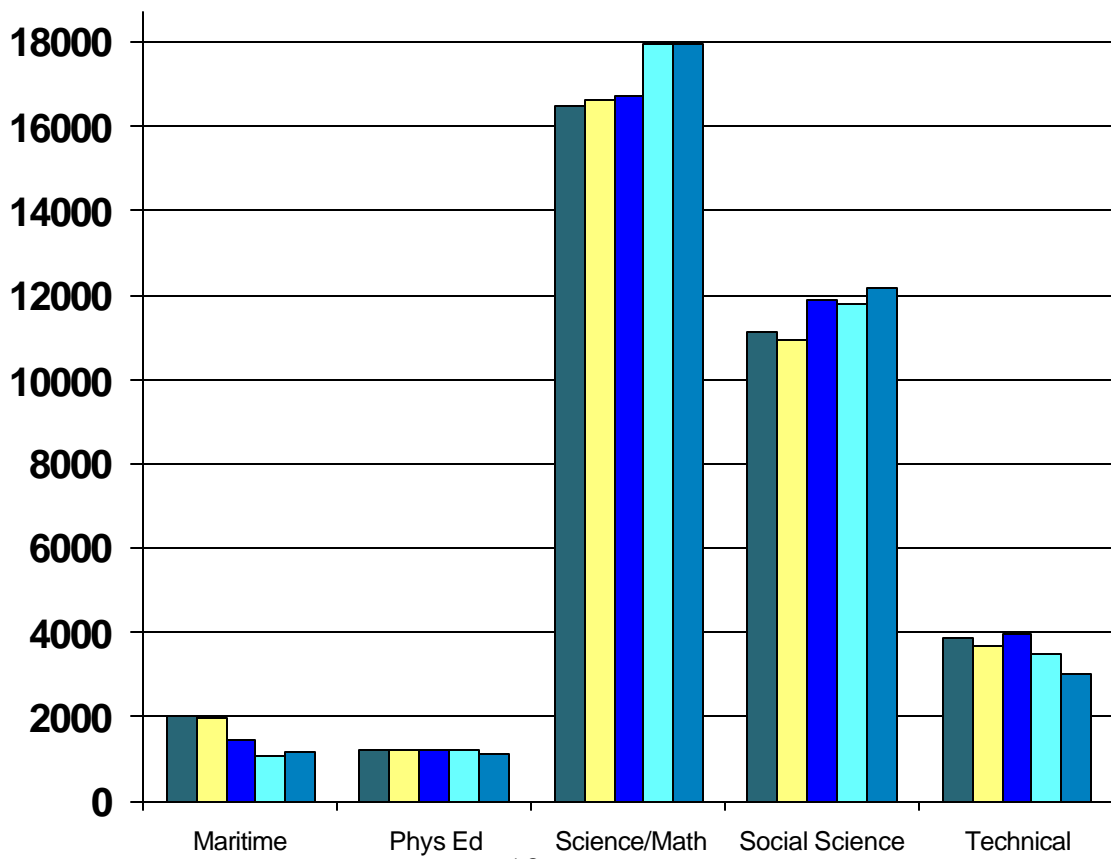
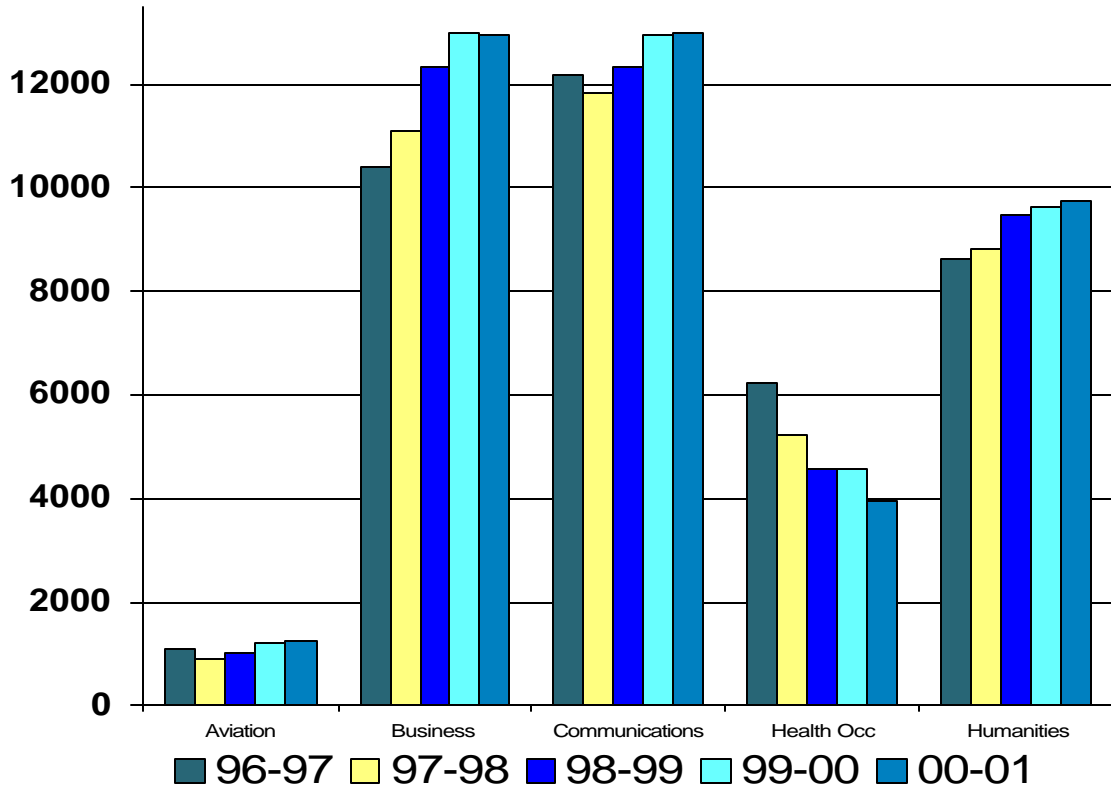
YEAR CONTACT HOURS GENERATED

School Year (Fall and Spring)

	94-95	95-96	96-97	97-98	98-99	99-00	00-01	% Change
AVF	493	506	473	347	439	483	456	-5.59%
AVG	638	674	614	557	584	742	745	0.40%
Aviation	1131	1180	1087	904	1023	1225	1201	-1.96%
ACC	2336	2219	2104	2227	2191	2138	2280	6.64%
BFI	0	18	0	30	0	0	0	0.00%
BDP	0	0	0	37.5	80.5	125	116	-7.20%
BUS	1689	1666	1765	1659	1674	1767	1782	0.85%
CIS	2264	2514	2758	2962	3642	3833	3884	1.33%
MGT	672	597	577	444	651	662	696	5.14%
MKT	452	372	373	375	327	483	513	6.21%
OIS	2256	2193	1750	1895	1909	1852	1750	-5.51%
PAR	(moved from Social Science)			327	365	340	368	8.24%
RSM	1043	1138	1064	1123	1508	1795	1546	-13.87%
Business	10712	10717	10391	11079.5	12347.5	12995	12935	-0.46%
COM	603	619	735	760	832	860	884	2.79%
ENG	8787	9364	9890	9396	9895	10333	10699	3.54%
MLA	342	452	453	359	96	233	0	-100.00%
MLF	76	160	98	140	156	140	216	54.29%
MLG	260	0	104	139	112	136	188	38.24%
MLJ	3	130	44	0	0	0	0	0.00%
MLR	84	0	0	0	0	0	0	0.00%
MLS	542	538	651	683	724	808	580	-28.22%
THR	142	227	214	336	506	414	419	1.21%
Comm	10839	11490	12189	11813	12321	12924	12986	0.48%
HAH	387	406	383	303	351	291	297	2.06%
HDA	608	456	582	624	590	589	469	-20.37%
HMA	286	348	375	242	215	268	106	-60.45%
HNR	5291	4816	4868	4064	3396	3384	3046	-9.99%
HPD	0	15	2.5	0.6	19.2	20	30.3	51.50%
Total	6572	6041	6210.5	5233.6	4571.2	4552	3948.3	-13.26%
ART	3213	2639	2855	3027	3323	3222	3351	4.00%
DNC	128	103	112	128	96	104	151	45.19%
HST	1003	1349	1617	1718	1778	1849	1875	1.41%
HUM	216	234	231	213	246	448	462	3.13%
MUS	1324	1210	1553	1422	1409	1245	1283	3.05%
PHL	900	1500	1653	1710	1642	1777	1895	6.64%
VCA	703	686	584	606	985	980	743	-24.18%
Hum	7487	7721	8605	8824	9479	9625	9760	1.40%
MDK	901	1172	1403	1336	883	709	723	1.97%
MNG	481	425	530	590	521	326	364	11.66%
MNS	32	32	68	56	54	32	64	100.00%
Maritime	1414	1629	2001	1982	1458	1067	1151	7.87%
HF	583	450	580	594	614	564	588	4.26%
OUT	272	306	330	256	264	268	210	-21.64%
PE	488	495	342	370	370	396	326	-17.68%
Phys Ed	1343	1251	1252	1220	1248	1228	1124	-8.47%
AST	293	245	250	245	290	280	305	8.93%
BIO	4251	4141	4291	3864	4095	4058	4183	3.08%
CHM	2399	2130	2058	2066	1736	1920	1616	-15.83%
EGR	454	460	437	392	369	452	441	-2.43%
ENV	711	840	666	749	930	1010	953	-5.64%
MTH	7495	7856	7868	8417	8533	9309	9502	2.07%
PHY	1136	1051	882	862	740	942	974	3.40%
Sci/Math	16739	16723	16452	16595	16693	17971	17974	0.02%
CD	470	467	737	826	799	797	762	-4.39%
COR	0	441	168	99	510	341	491	43.99%
CJ	654	529	429	408	404	282	243	-13.83%
ECO	981	981	957	1152	1176	1197	1185	-1.00%
EDU	180	261	228	282	234	208	231	11.06%
GEO	457	428	380	332	453	443	425	-4.06%
LWE	725	746	614	600	711	679	770	13.40%
PAR	492	491	488	(moved to Business)				
PLS	2356	2076	2013	2187	2307	2367	2415	2.03%
PSY	3227	3130	3040	3115	3354	3478	3531	1.52%
SDC	423	395	390	351	398.5	368.5	362	-1.76%
SOC	1623	1198	1398	1312	1290	1427	1452	1.75%
SWK	190	293	246	265	247	213	293	37.56%
Soc Scienc	11778	11436	11088	10929	11883.5	11800.5	12160	3.05%
AUT	1041	1141	768	805	925	934	611	-34.58%
EET	775	705	616	507	611	545	420	-22.94%
MFG	2364	2302	2270	2083	2179	1732	1675	-3.29%
TDP	0	0	0	0	8	14	0	-100.00%
WPT	264	234	185	251	257	288	299	3.82%
Technical	4444	4382	3839	3646	3980	3513	3005	-14.46%
Campus Total	72459	72570	73114.5	72226.1	75004.2	76900.5	76244.3	-0.85%

Contact Hours Generated

School year (Fall and Spring)



Report Day Enrollments Cadillac Campus Credit Hours Generated

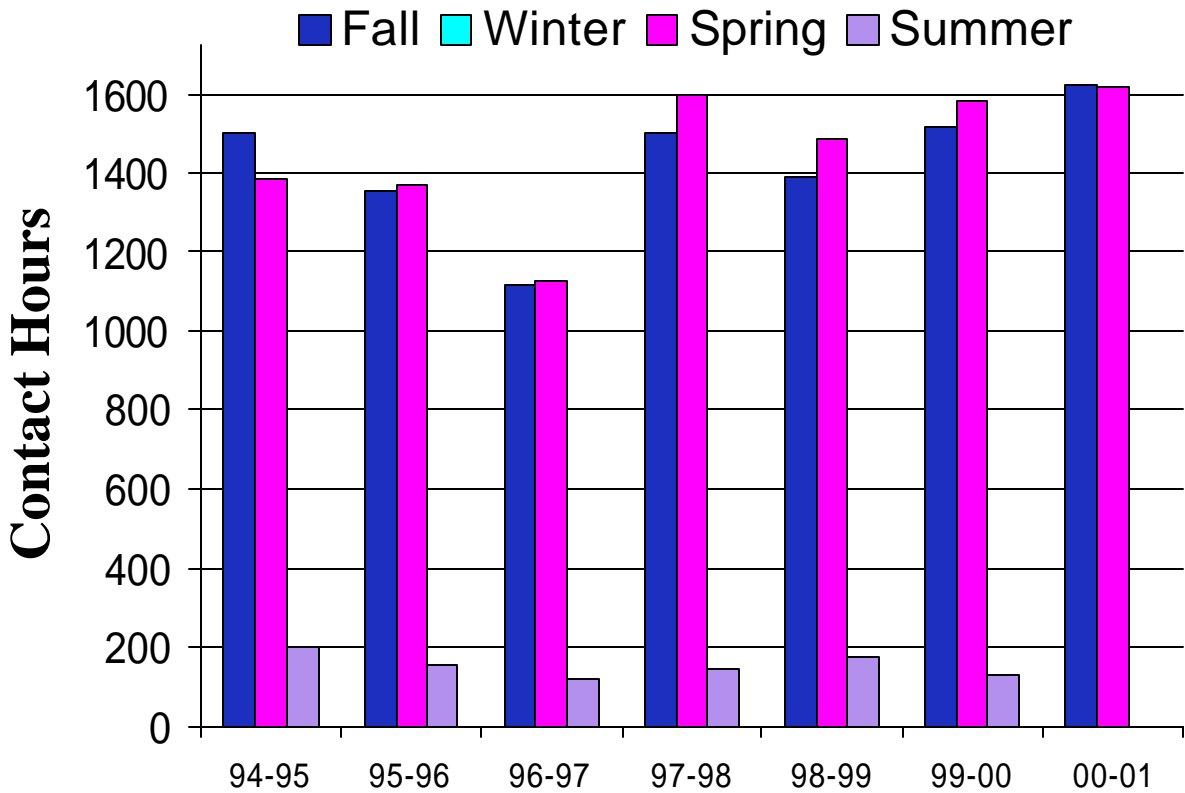
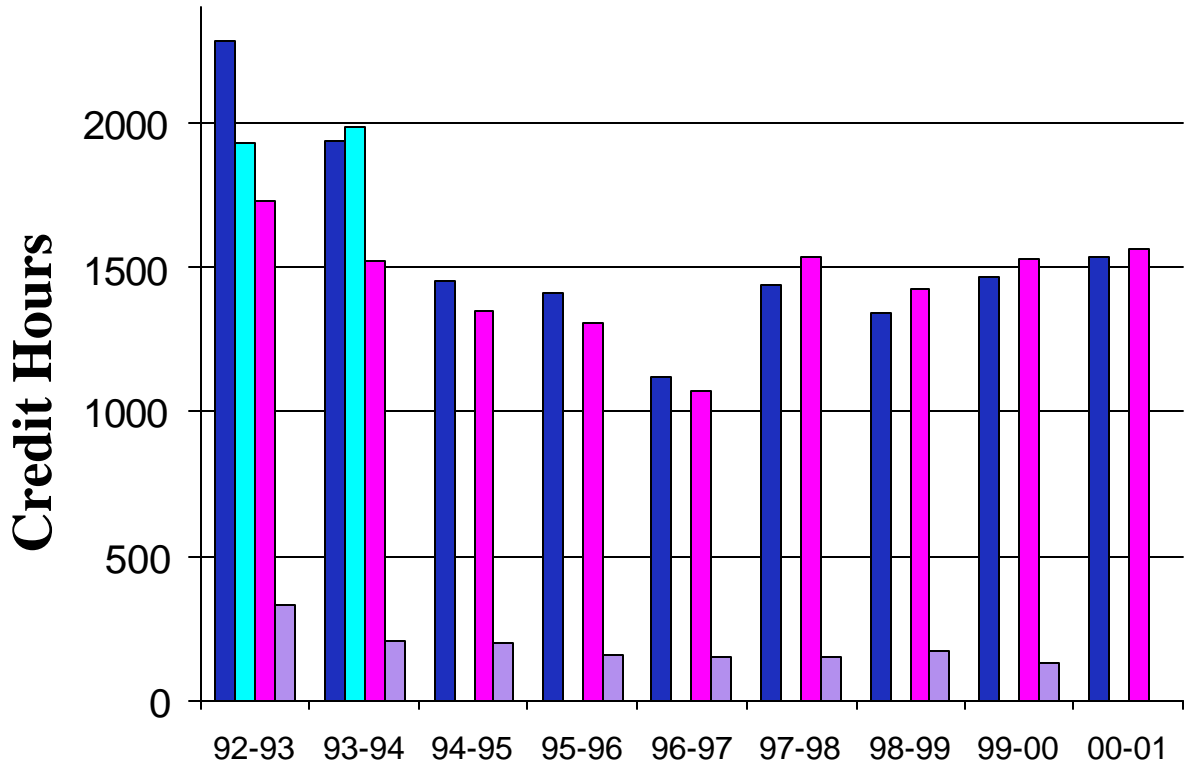
	Spring 95	Spring 96	Spring 97	Spring 98	Spring 99	Spring 00	Spring 01	% Change
ACC	44	0	0	0	0	0	0	0.00%
BUS	90	93	0	24	33	27	48	77.78%
CIS	98	72	76	78	54	51	87	70.59%
MGT	33	0	0	0	0	0	0	0.00%
MKT	0	0	0	0	0	0	0	0.00%
OIS	0	36	0	0	0	0	0	0.00%
PAR		moved from SS		0	0	0	0	0.00%
Business	265	201	76	102	87	78	135	73.08%
COM	44	44	60	36	60	60	48	-20.00%
ENG	258	201	296	329	267	231	309	33.77%
MLS	0	0	0	0	0	0	0	0.00%
Comm	302	245	356	365	327	291	357	22.68%
HAH	27	24	12	4	12	9	0	-100.00%
HNR	0	0	0	35	0	24	10	-58.33%
Health Occ	27	24	12	39	12	33	10	-69.70%
ART	0	0	0	0	0	0	0	0.00%
HST	88	110	76	165	167	231	191	-17.32%
MUS	0	0	0	15	0	0	12	0.00%
PHL	69	0	39	60	69	102	60	-41.18%
Hum	157	110	115	240	236	333	263	-21.02%
HF	9	12	8	22	13	9	20	122.22%
PE	0	3	2	0	0	0	0	0.00%
Phys Ed	9	15	10	22	13	9	20	122.22%
BIO	0	52	72	96	76	84	76	-9.52%
CHM	56	48	44	68	56	44	68	54.55%
ENV	48	48	0	0	48	0	0	0.00%
MTH	146	214	236	188	223	289	223	-22.84%
Sci/Math	250	362	352	352	403	417	367	-11.99%
CD	28	27	0	0	40	0	0	0.00%
CJ							52	100.00%
COR	0	75	0	0	0	0	0	0.00%
ECO	45	0	0	0	0	0	63	100.00%
EDU	0	0	22	0	0	0	0	0.00%
GEO	0	0	0	39	45	0	36	100.00%
PAR	0	0	0	moved to the Business Discipline				
PLS	63	60	30	72	33	72	63	-12.50%
PSY	108	150	81	198	153	249	120	-51.81%
SOC	69	36	15	102	75	48	75	56.25%
SWK	27	0	0	0	0	0	0	0.00%
Soc Sci	340	348	148	411	346	369	409	10.84%
Cadillac Campus Total	1350	1305	1069	1531	1424	1530	1561	2.03%

Report Day Enrollments Cadillac Campus Contact Hours Generated

	Spring 95	Spring 96	Spring 97	Spring 98	Spring 99	Spring 00	Spring 01	% Change
ACC	44	0	0	0	0	0	0	0.00%
BUS	90	93	0	24	33	27	48	77.78%
CIS	98	72	76	78	54	51	87	70.59%
MGT	33	0	0	0	0	0	0	0.00%
MKT	0	0	0	0	0	0	0	0.00%
OIS	0	36	0	0	0	0	0	0.00%
PAR	moved from Social Science			0	0	0	0	0.00%
Business	265	201	76	102	87	78	135	73.08%
COM	44	44	60	36	60	60	48	-20.00%
ENG	258	201	296	329	267	231	309	33.77%
MLS	0	0	0	0	0	0	0	0.00%
Comm	302	245	356	365	327	291	357	22.68%
HAH	27	24	12	4	12	9	0	-100.00%
HNR	0	0	0	35	0	24	10	-58.33%
Health Occ	27	24	12	39	12	33	10	-69.70%
ART	0	0	0	0	0	0	0	0.00%
HST	88	110	76	165	167	231	191	-17.32%
MUS	0	0	0	15	0	0	12	100.00%
PHL	69	0	39	60	69	102	60	-41.18%
Hum	157	110	115	240	236	333	263	-21.02%
HF	18	24	16	44	26	18	40	122.22%
PE	0	6	4	0	0	0	0	0.00%
Phys Ed	18	30	20	44	26	18	40	122.22%
BIO	0	65	90	120	95	105	95	-9.52%
CHM	70	60	55	85	70	55	85	54.55%
ENV	60	60	246	188	60	0	0	0.00%
MTH	146	225	0	0	223	296	223	-24.66%
Sci/Math	276	410	391	393	448	456	403	-11.62%
CD	28	27	0	0	40	0	0	0.00%
CJ							52	100.00%
COR	0	75	0	0	0	0	0	0.00%
ECO	45	0	0	0	0	0	63	100.00%
EDU	0	0	33	0	0	0	0	0.00%
GEO	0	0	0	39	45	0	36	100.00%
PAR	0	0	0 moved to Business					
PLS	63	60	30	72	33	72	63	-12.50%
PSY	108	150	81	198	153	249	120	-51.81%
SOC	69	36	15	102	75	48	75	56.25%
SWK	27	0	0	0	0	0	0	0.00%
Soc Sci	340	348	159	411	346	369	409	10.84%
Cadillac Campus Total	1385	1368	1129	1594	1482	1578	1617	2.47%

Cadillac Campus

Fall, Winter, Spring and Summer



Cadillac Campus

Enrollment for Fall, Winter, Spring, Summer

