



Enrollment Report
Spring Semester 2002
Report Day - January 31, 2002

Carol Taberski, Registrar, Interim Director of Admissions
Nancy McArthur, Records/Registration Technician

Spring Semester 2002
Report Day – January 31, 2002

Table of Contents

| | |
|--|----|
| Summary | 1 |
| Academic Enrollment Report | 2 |
| Office of Admissions - Final report | 3 |
| Web Registration..... | 4 |
| TouchTone Registration | 4 |
| Dual Enrollment | 4 |
| Residency Chart | 5 |
| Gender Chart | 5 |
| Enrollment Status Chart..... | 5 |
| Traverse City Campuses Credit Hours by Discipline & Chart | 6 |
| Traverse City Campuses Credit Hours by Discipline & Chart (continued) | 7 |
| Traverse City Campuses Contact Hours by Discipline & Chart..... | 8 |
| Traverse City Campuses Contact Hours by Discipline & Chart (continued)..... | 9 |
| Traverse City Campuses Yearly Credit Hours by Discipline & Chart | 10 |
| Traverse City Campuses Yearly Credit Hours by Discipline & Chart (continued) | 11 |
| Traverse City Campuses Yearly Contact Hours by Discipline & Chart | 12 |
| Traverse City Campuses Yearly Contact Hours by Discipline & Chart (continued)..... | 13 |
| Cadillac Campus Credit Hours & Chart | 14 |
| Cadillac Campus Contact Hours & Chart | 15 |

Enrollment Report Summary – Spring 2002

Spring 2002 showed the largest percentage increases in enrollment for Spring Semester at Northwestern Michigan College in over ten years. Spring 2002 head count shows an increase of 4.73 percent, which brings it to 4048. Credit hours have increased each spring since 1997 with a 5.61 percent increase for 2002, bringing credit hours to 36,943.8. Contact hours increased 5.91 percent going from 38443.3 in Spring 2001 to 40,713.8. Spring enrollments are consistently lower than fall enrollments, but this spring the drop was only three percent instead of almost six percent in the past.

The Admissions Office instituted additional initiatives for Spring Semester to help increase enrollment. In addition to the admissions letters sent to all new applicants, over two thousand letters were sent to people who made inquiries. This is the first semester such a large amount of letters were sent to prospective students. These letters were sent to potential students who had financial aid information sent to NMC but had not applied, requested a catalog, called for information, talked with a recruiter, or applied a prior semester and still had not registered. The increases in enrollment could be attributed to these new initiatives along with the state of the economy, which when down, tends to correspond to increases in enrollment. Contact the Admissions office for specific details.

The number of applications received rose to 1023, an increase of 12.8 percent. The number of students registered, 653, was an increase of 8.1 percent. The number of students admitted to those who applied remains very high, 98.2 percent.

The Traverse City campuses; main, M-Tec, and Maritime; showed slightly higher increases when Cadillac classes were not included. Cadillac enrollments for spring dropped 8.91 percent in headcount and over ten percent in credit hours and contact hours. No definitive reasons have been identified for the decreases. Comments from students related to a lack of financial aid because they applied late and aid being no longer available because of failing grades. The variety of classes offered and times classes were offered limit enrollment. The same classes tend to be offered and students are required to travel to main campus to continue their education.

Enrollment percentage changes for community colleges around the state can be found at <http://www.macrao.org/ccweekly.asp>. The most common explanation for the increases was the change in the economy. Almost every community college in the state showed increases for spring semester, many over ten percent.

The disciplines on main campus with the largest increases in credit hours were Maritime with a 37 percent increase, Technical increased by over 31 percent and Physical Education increased by over twenty percent. Only the Business discipline showed a decrease in credit hours at 3.06 percent.

Combining Fall 2001 and Spring 2002 enrollments, the disciplines with the largest increases in contact hours are Maritime with over 31 percent, Technical with over 22 percent, and Physical Education with over 19 percent increase. Only two disciplines showed decreases in contact hours combining Fall 2001 and Spring 2002, Business and Social Science, and the decreases were less than one percent.

Academic Enrollment Report

Spring Report Day

ALL LOCATIONS

| | Spring 1996 | Spring 1997 | Spring 1998 | Spring 1999 | Spring 2000 | Spring 2001 | Spring 2002 | % Change |
|-----------------------|----------------|----------------|----------------|----------------|----------------|----------------|----------------|----------|
| Total Enrolled | 3821 | 3762 | 3788 | 3838 | 3850 | 3865 | 4048 | 4.73% |
| Credit Hours | 32932.1 | 32824.7 | 33020 | 33747.6 | 34755 | 34980.3 | 36943.8 | 5.61% |
| Contact Hours | 37051.6 | 36659.7 | 36672 | 37327.6 | 38469 | 38443.3 | 40713.8 | 5.91% |
| Average Load | 8.62 | 8.73 | 8.72 | 8.79 | 9.03 | 9.05 | 9.13 | 0.88% |
| STUDENT: | | | | | | | | |
| Full-Time | 1221 | 1373 | 1377 | 1400 | 1484 | 1536 | 1586 | 3.26% |
| 6-11 Credits | 1233 | 1209 | 1234 | 1306 | 1343 | 1253 | 1392 | 11.09% |
| 1-5 Credits | 1367 | 1180 | 1177 | 1132 | 1023 | 1076 | 1070 | -0.56% |
| Males | | | | | | | | |
| Females | 1637 | 1552 | 1582 | 1606 | 1593 | 1598 | 1694 | 6.01% |
| G.T. Residents | | | | | | | | |
| Service Area | 1059 | 1064 | 1119 | 1212 | 1268 | 1216 | 1322 | 8.72% |
| Other Counties | 471 | 489 | 524 | 527 | 565 | 574 | 560 | -2.44% |
| Out-Of-State | 58 | 83 | 60 | 55 | 55 | 60 | 69 | 15.00% |
| Foreign | 21 | 18 | 23 | 19 | 24 | 21 | 31 | 47.62% |
| VLC - In District | | | | | | 6 | 2 | -66.67% |
| VLC - Out of District | | | | | | 2 | 4 | 100.00% |
| VLC - Out-Of-State | | | | | | | | |
| Mean Age | 27.3 | 26.85 | 27.33 | 26.96 | 26.55 | 26.28 | 26.5 | 0.84% |

TRAVERSE CITY CAMPUSES

| | Spring 1996 | Spring 1997 | Spring 1998 | Spring 1999 | Spring 2000 | Spring 2001 | Spring 2002 | |
|-----------------|----------------|----------------|----------------|----------------|----------------|----------------|----------------|-------|
| *Total Enrolled | 3656 | 3631 | 3596 | 3677 | 3673 | 3712 | 3905 | 5.20% |
| Credit Hours | 31627.1 | 31758.7 | 31471 | 32323.6 | 33225 | 33419.3 | 35546.8 | 6.37% |
| Contact Hours | 35683.6 | 35530.7 | 35051.3 | 35845.6 | 36891 | 36826.3 | 39267.8 | 6.63% |
| Average Load | 8.65 | 8.75 | 8.75 | 8.79 | 9.05 | 9.00 | 9.10 | 1.11% |

CADILLAC CAMPUS

| | Spring 1996 | Spring 1997 | Spring 1998 | Spring 1999 | Spring 2000 | Spring 2001 | Spring 2002 | |
|-----------------|----------------|----------------|----------------|----------------|----------------|----------------|----------------|---------|
| *Total Enrolled | 182 | 147 | 207 | 204 | 223 | 202 | 184 | -8.91% |
| Credit Hours | 1305 | 1069 | 1531 | 1424 | 1530 | 1561 | 1397 | -10.51% |
| Contact Hours | 1368 | 1129 | 1594 | 1482 | 1578 | 1617 | 1446 | -10.58% |
| Average Load | 7.17 | 7.27 | 7.40 | 6.98 | 6.86 | 7.73 | 7.59 | -1.75% |

*Some students register for classes on more than one campus. They are represented in each campus count with an up-duplicated count in ALL LOCATIONS.

**Office of Admissions - Final Report
Spring Semester 2002**

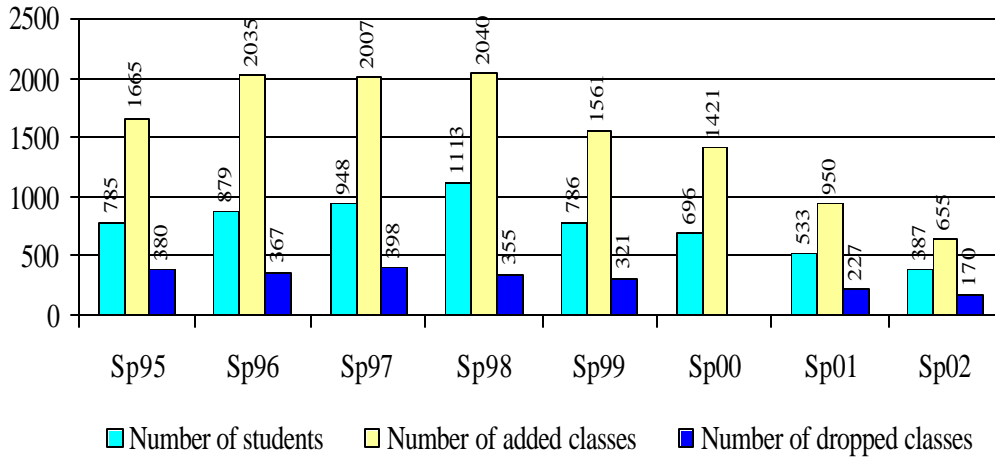
| | 2001 | 2002 | % Change |
|--|------------|-------------|----------|
| APPLICATIONS RECEIVED | 907 | 1023 | + 12.8 |
| APPLICATION TYPE: | | | |
| <i>First Time in any College (FTIAC)</i> | 462 | 540 | + 16.9 |
| <i>Dual Enrollment</i> | 81 | 103 | + 27.2 |
| <i>Co-Enrolled</i> | 14 | 3 | - 78.6 |
| <i>Special Enrollment Option</i> | 20 | 11 | - 45.0 |
| <i>Former Dual Enrollment (New)</i> | 22 | 16 | - 27.3 |
| <i>Transfer</i> | 307 | 336 | + 9.4 |
| <i>Guest</i> | 16 | 14 | - 12.5 |
| ADMISSION STATUS: | | | |
| <i>Regular Admission</i> | 853 | 985 | + 15.5 |
| <i>Limited Admission</i> | 23 | 20 | - 13.0 |
| <i>Pending Admission</i> | 30 | 16 | - 46.7 |
| <i>Denied Admission</i> | 0 | 0 | - |
| <i>Cancelled Admission (student initiated)</i> | 1 | 2 | + 100.0 |
| NUMBER REGISTERED | 604 | 653 | + 8.1 |
| <i>New, Never Attended NMC</i> | 244 | 287 | + 17.6 |
| <i>New Transfer, Never Attended NMC</i> | 207 | 208 | + .5 |
| <i>Returning Transfer</i> | 10 | 14 | + 40.0 |
| <i>Re-Admit</i> | 26 | 31 | + 19.2 |
| <i>Dual Enrolled</i> | 78 | 85 | + 9.0 |
| <i>Guest</i> | 14 | 10 | - 28.6 |
| <i>Foreign Student</i> | 6 | 4 | - 33.3 |
| <i>Co-Enrolled</i> | 4 | 3 | - 25.0 |
| <i>Special Enrollment Option</i> | 15 | 11 | - 26.7 |
| COMMENTS: | | | |
| <i>Percent Applicants admitted</i> | 96.6 | 98.2 | +1.6 |
| <i>Percent Applicants FTIAC</i> | 54.8 | 54.3 | -.5 |
| <i>Percent Applicants transferred to NMC</i> | 33.8 | 32.8 | -1.0 |
| <i>YIELD – Total Apps to Enrolled</i> | 66.6 | 63.8 | -2.8 |
| <i>YIELD – Admits to Enrolled</i> | 70.0 | 65.0 | -5.0 |

Web Registration

Web registration continues to grow. What began in Fall 2000 with 64 students has expanded to 512 students in Spring 2002. One year ago, Spring 2001, was the first semester students could use the web to make credit card payments. The number of student using web registration remained consistent from fall with an increase of only two students. The number of students using credit card payments increased from 154 to 210. Over half our students have holds on their records and are not able to use telephone or web registration.

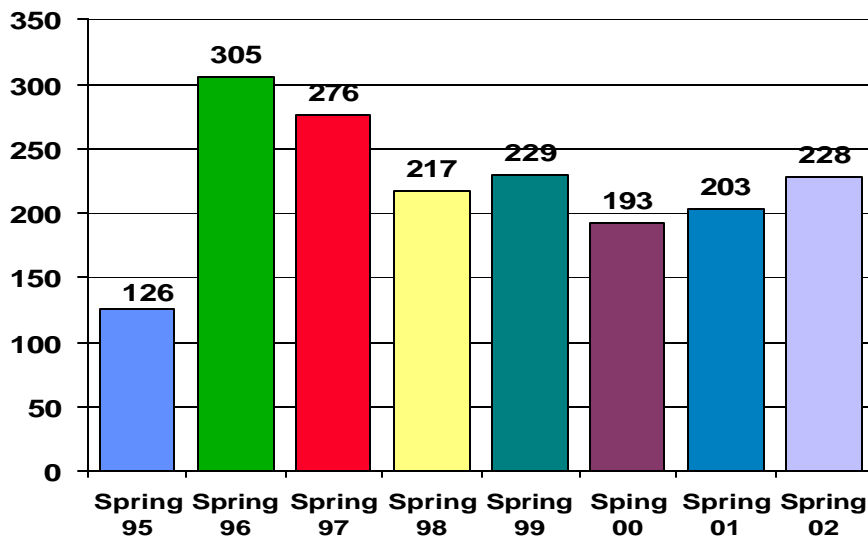
Telephone Registration

Telephone registrations continue to decline.



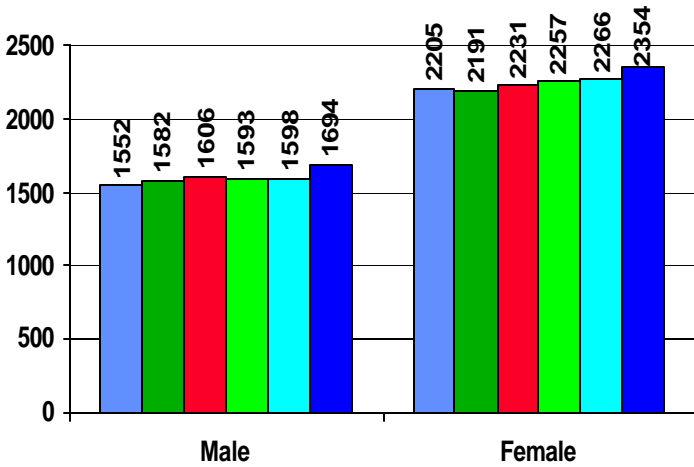
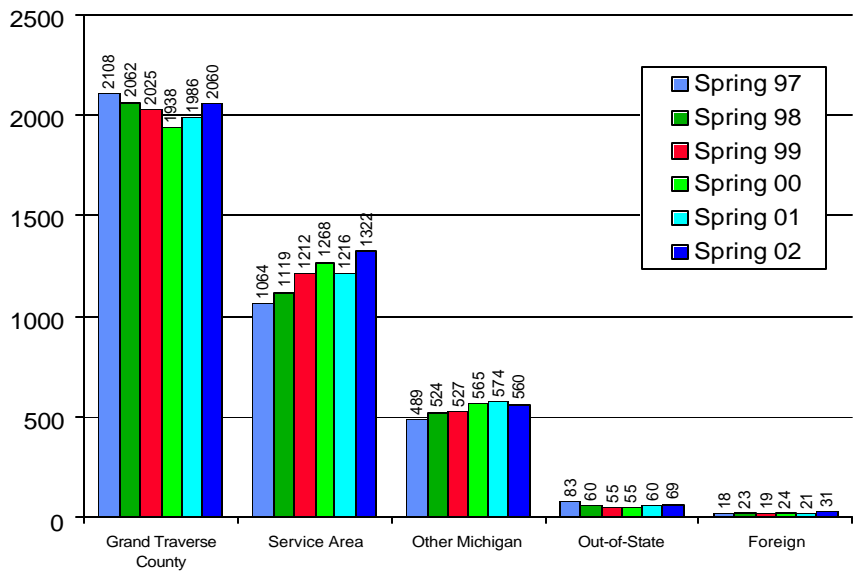
Dual Enrollment

Dual Enrollment numbers are increasing. These numbers include those students who are in high school receiving credit at both the high school and the college. The numbers also include those high school students who are taking college credits and not using those credits towards high school credit.



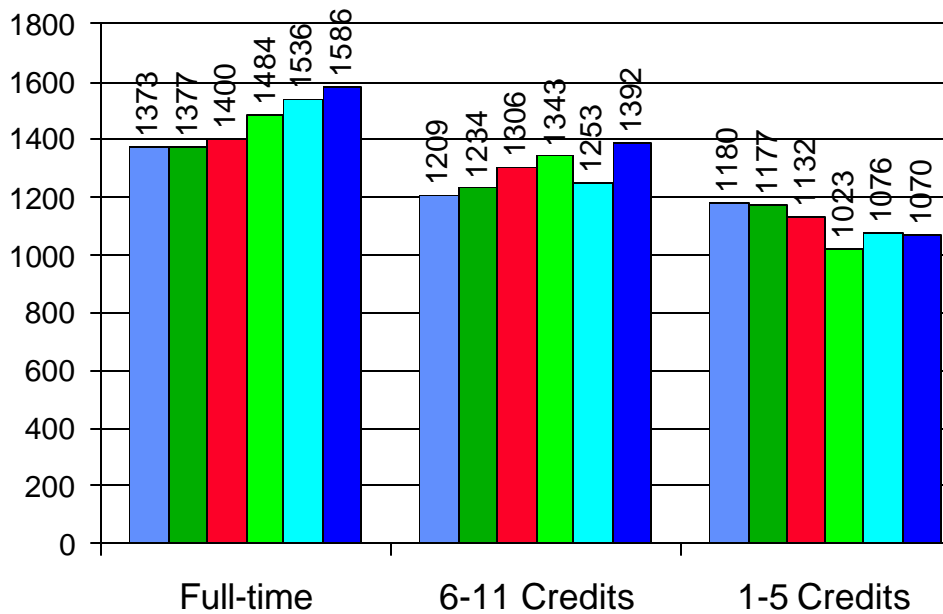
Demographics

By Residency



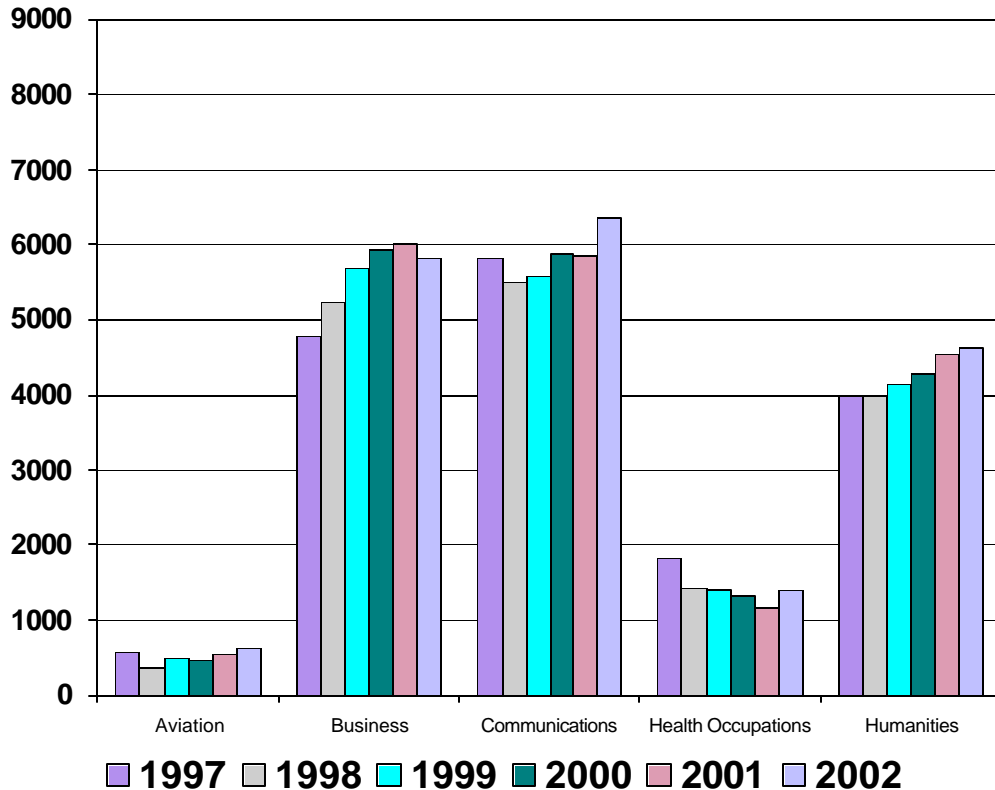
By Gender

By Enrollment Status



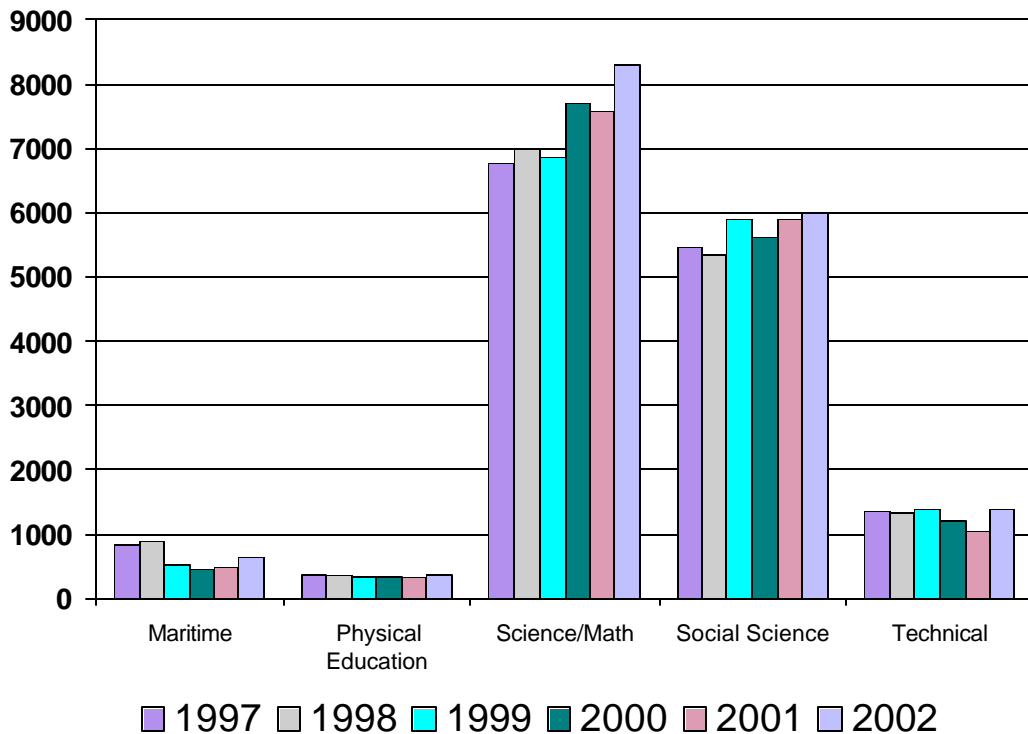
Traverse City Campuses Credit Hours

| | Spring 95 | Spring 96 | Spring 97 | Spring 98 | Spring 99 | Spring 00 | Spring 01 | Spring 02 | % Change |
|-------------------|--------------------------|-------------|---------------|---------------|---------------|-------------|---------------|---------------|---------------|
| AVF | 196 | 260 | 218 | 136 | 205 | 184 | 179 | 209 | 16.76% |
| AVG | 315 | 359 | 355 | 236 | 289 | 282 | 366 | 409 | 11.75% |
| Aviation | 511 | 619 | 573 | 372 | 494 | 466 | 545 | 618 | 13.39% |
| ACC | 1091 | 1060 | 891 | 1068 | 979 | 977 | 1048 | 1063 | 1.43% |
| BFI | 0 | 16 | 0 | 16 | 0 | 0 | 0 | 0 | 0.00% |
| BPD | 0 | 0 | 0 | 37.5 | 49.5 | 80 | 52 | 15 | -71.15% |
| BUS | 798 | 769 | 862 | 747 | 750 | 792 | 885 | 939 | 6.10% |
| CIS | 1208 | 1341 | 1411 | 1615 | 1962 | 1984 | 2022 | 1819 | -10.04% |
| MGT | 318 | 291 | 295 | 216 | 411 | 363 | 375 | 345 | -8.00% |
| MKT | 231 | 210 | 232 | 189 | 156 | 243 | 249 | 282 | 13.25% |
| OIS | 1021 | 948 | 743 | 884 | 774 | 758 | 735 | 683 | -7.07% |
| PAR | (moved from Soc Science) | | | 103 | 140 | 152 | 153 | 180 | 17.65% |
| RSM | 288 | 339 | 342 | 356 | 460 | 580 | 492 | 501 | 1.83% |
| Business | 4955 | 4974 | 4776 | 5231.5 | 5681.5 | 5929 | 6011 | 5827 | -3.06% |
| COM | 308 | 301 | 404 | 352 | 412 | 428 | 434 | 436 | 0.46% |
| ENG | 4208 | 4445 | 4765 | 4509 | 4542 | 4653 | 4820 | 5340 | 10.79% |
| MLA | 120 | 157 | 157 | 90 | 0 | 84 | 0 | 0 | 0.00% |
| MLF | 0 | 40 | 46 | 40 | 64 | 72 | 80 | 68 | -15.00% |
| MLG | 110 | 0 | 44 | 32 | 32 | 68 | 48 | 44 | -8.33% |
| MLJ | 0 | 60 | 12 | 0 | 0 | 0 | 0 | 0 | 0.00% |
| MLR | 84 | 0 | 0 | 0 | 0 | 0 | 0 | 0 | 0.00% |
| MLS | 213 | 202 | 321 | 273 | 284 | 360 | 244 | 304 | 24.59% |
| THR | 62 | 128 | 70 | 209 | 256 | 222 | 223 | 180 | -19.28% |
| Comm | 5105 | 5333 | 5819 | 5505 | 5590 | 5887 | 5849 | 6372 | 8.94% |
| HAH | 190 | 187 | 144 | 113 | 148 | 83 | 72 | 161 | 123.61% |
| HDA | 294 | 247 | 317 | 295 | 267 | 274 | 249 | 302 | 21.29% |
| HMA | 159 | 230 | 186 | 134 | 120 | 134 | 73 | 39 | -46.58% |
| HNR | 1561 | 1433 | 1187 | 882 | 864 | 833 | 772 | 883 | 14.38% |
| HPD | 0 | 4 | 0.7 | 0.5 | 7.1 | 11 | 8.8 | 7.8 | -11.36% |
| Health Occ | 2204 | 2101 | 1834.7 | 1424.5 | 1406.1 | 1335 | 1174.8 | 1392.8 | 18.56% |
| ART | 1232 | 1069 | 1181 | 1256 | 1291 | 1267 | 1363 | 1382 | 1.39% |
| DNC | 28 | 29 | 30 | 26 | 26 | 22 | 33 | 34 | 3.03% |
| HST | 513 | 763 | 901 | 818 | 857 | 855 | 977 | 1033 | 5.73% |
| HUM | 120 | 129 | 123 | 108 | 126 | 218 | 255 | 200 | -21.57% |
| MUS | 577 | 573 | 698 | 604 | 600 | 575 | 570 | 593 | 4.04% |
| PHL | 538 | 701 | 851 | 928 | 800 | 898 | 1029 | 1002 | -2.62% |
| VCA | 220 | 234 | 212 | 260 | 442 | 450 | 321 | 399 | 24.30% |
| Hum | 3228 | 3498 | 3996 | 4000 | 4142 | 4285 | 4548 | 4643 | 2.09% |



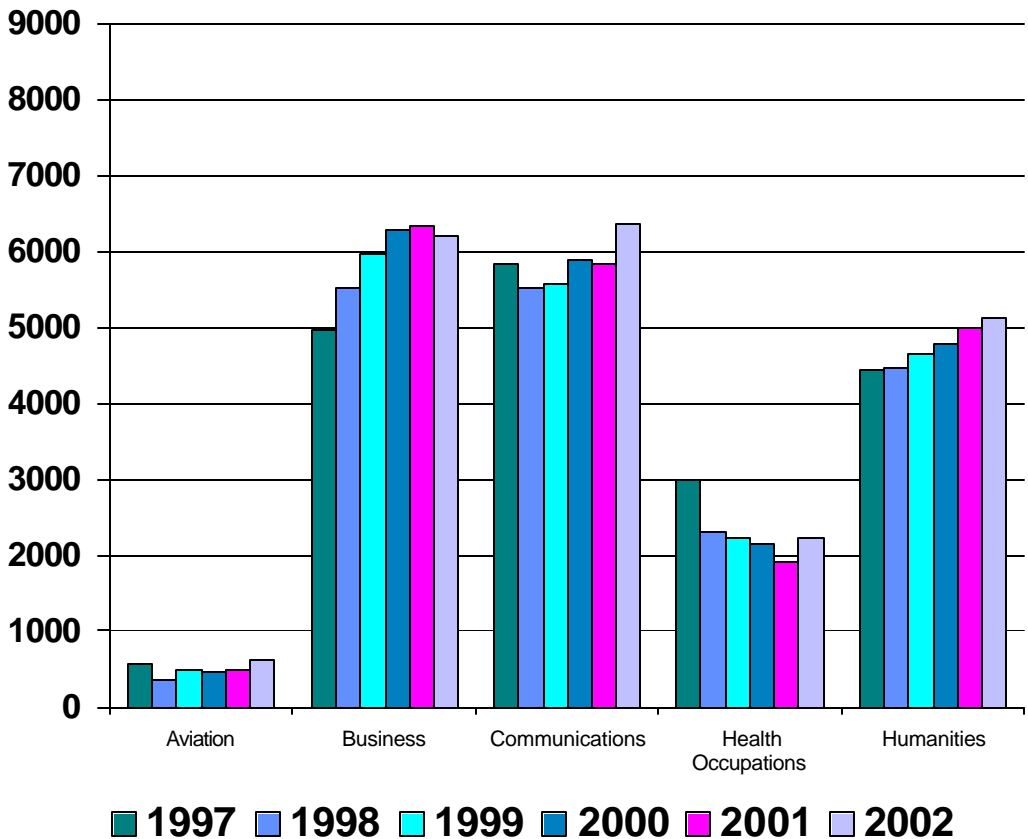
Traverse City Campuses Credit Hours (continued)

| | Spring 95 | Spring 96 | Spring 97 | Spring 98 | Spring 99 | Spring 00 | Spring 01 | Spring 02 | % Change |
|---------------------|--------------|--------------|----------------|---------------------|----------------|--------------|----------------|----------------|---------------|
| MDK | 359 | 453 | 601 | 584 | 320 | 308 | 346 | 415 | 19.94% |
| MNG | 192 | 211 | 199 | 251 | 205 | 141 | 97 | 175 | 80.41% |
| MNS | 18 | 18 | 22 | 52 | 8 | 4 | 20 | 46 | 130.00% |
| Maritime | 569 | 682 | 822 | 887 | 533 | 453 | 463 | 636 | 37.37% |
| HF | 192.5 | 123 | 176 | 178 | 163 | 167 | 174 | 173 | -0.57% |
| OUT | 70 | 88 | 90 | 73 | 72 | 61 | 52 | 64 | 23.08% |
| PE | 126.5 | 140 | 102 | 113 | 108 | 114 | 86 | 139 | 61.63% |
| Phys Ed | 389 | 351 | 368 | 364 | 343 | 342 | 312 | 376 | 20.51% |
| AST | 107 | 96 | 80 | 76 | 108 | 92 | 116 | 124 | 6.90% |
| BIO | 1609 | 1532 | 1709 | 1470 | 1489 | 1503 | 1651 | 1679 | 1.70% |
| CHM | 776 | 734 | 638 | 709 | 530 | 701 | 508 | 556 | 9.45% |
| EGR | 189 | 201 | 198 | 164 | 135 | 201 | 177 | 184 | 3.95% |
| ENV | 245 | 312 | 238 | 386 | 400 | 448 | 416 | 458 | 10.10% |
| MTH | 3500 | 3601 | 3617 | 2923 | 3951 | 4398 | 4376 | 4959 | 13.32% |
| PHY | 400 | 353 | 286 | 283 | 249 | 366 | 332 | 345 | 3.92% |
| Sci/Math | 6828 | 6829 | 6766 | 7011 | 6862 | 7709 | 7576 | 8305 | 9.62% |
| CD | 290 | 280 | 365 | 441 | 401 | 482 | 434 | 489 | 12.67% |
| CJ | 286 | 244 | 224 | 139 | 184 | 149 | 222 | 196 | -11.71% |
| COR | 0 | 441 | 168 | 99 | 339 | 126 | 243 | 0 | -100.00% |
| ECO | 444 | 456 | 441 | 600 | 621 | 585 | 597 | 741 | 24.12% |
| EDU | 88 | 92 | 76 | 84 | 84 | 65 | 78 | 103 | 32.05% |
| GEO | 227 | 202 | 171 | 181 | 216 | 82 | 88 | 116 | 31.82% |
| LWE | 405 | 381 | 318 | 309 | 390 | 307 | 430 | 444 | 3.26% |
| PAR | 202 | 144 | 190 | (moved to Business) | | | | | |
| PLS | 1097 | 996 | 954 | 1089 | 1110 | 1134 | 1149 | 885 | -22.98% |
| PSY | 1538 | 1598 | 1668 | 1576 | 1652 | 1802 | 1697 | 1969 | 16.03% |
| SDC | 90 | 87 | 87 | 59 | 69 | 49 | 52.5 | 0 | -100.00% |
| SOC | 962 | 592 | 711 | 651 | 747 | 773 | 813 | 972 | 19.56% |
| SWK | 109 | 165 | 80 | 112 | 85 | 63 | 97 | 93 | -4.12% |
| Soc Sci | 5738 | 5678 | 5453 | 5340 | 5898 | 5617 | 5900.5 | 6008 | 1.82% |
| AUT | 434 | 476 | 283 | 381 | 332 | 337 | 296 | 349 | 17.91% |
| EET | 266 | 246 | 196 | 170 | 210 | 176 | 125 | 142 | 13.60% |
| ITD | | | | | | | | 41 | 100.00% |
| ITH | | | | | | | | 92 | 100.00% |
| ITPD | | | | | | | | 15 | 100.00% |
| MFG | 845 | 745 | 807 | 718 | 732 | 587 | 511 | 579 | 13.31% |
| TPD | 0 | 0 | 0 | 0 | 4 | 4 | 0 | 0 | 0.00% |
| WPT | 88 | 96 | 65 | 67 | 96 | 98 | 108 | 151 | 39.81% |
| Technical | 1633 | 1563 | 1351 | 1336 | 1374 | 1202 | 1040 | 1369 | 31.63% |
| Campus Total | 31158 | 31628 | 31758.7 | 31471 | 32323.6 | 33225 | 33419.3 | 35546.8 | 6.37% |



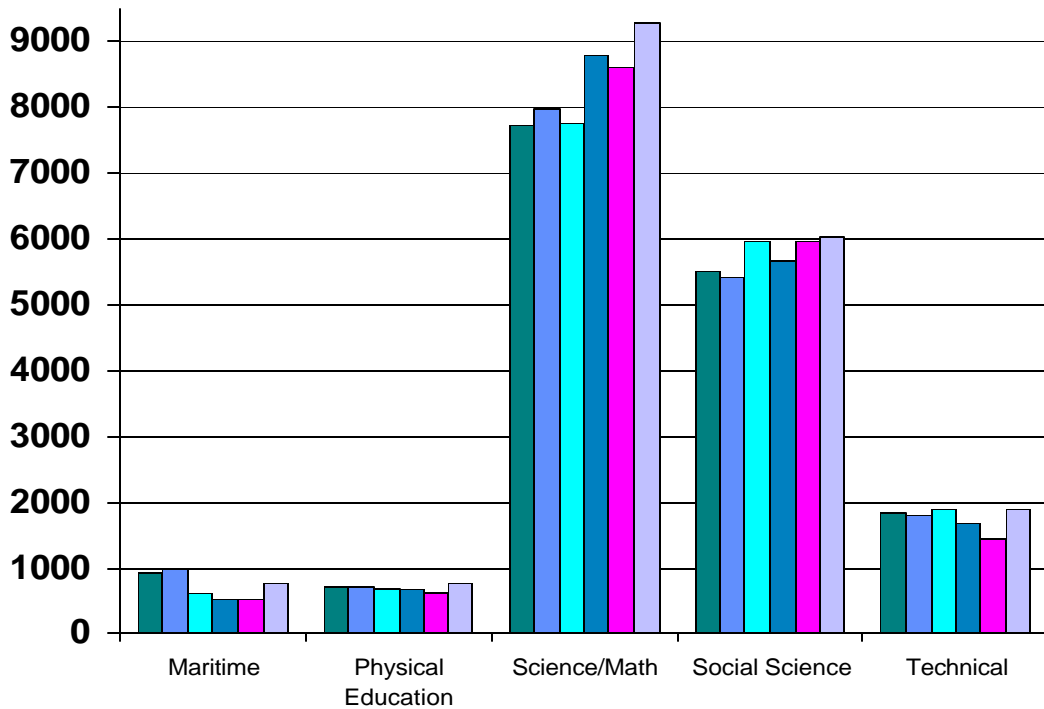
Traverse City Campuses Contact Hours

| | Spring 95 | Spring 96 | Spring 97 | Spring 98 | Spring 99 | Spring 00 | Spring 01 | Spring 02 | % Change |
|------------------------------------|-------------|-------------|---------------|---------------|---------------|-------------|---------------|---------------|---------------|
| AVF | 196 | 260 | 218 | 136 | 205 | 184 | 179 | 209 | 16.76% |
| AVG | 315 | 359 | 355 | 236 | 289 | 282 | 318 | 409 | 28.62% |
| Aviation | 511 | 619 | 573 | 372 | 494 | 466 | 497 | 618 | 24.35% |
| ACC | 1091 | 1060 | 891 | 1068 | 979 | 977 | 1048 | 1063 | 1.43% |
| BFI | 0 | 16 | 0 | 16 | 0 | 0 | 0 | 0 | 0.00% |
| BPD | 0 | 0 | 0 | 37.5 | 49.5 | 80 | 52 | 15 | -71.15% |
| BUS | 798 | 769 | 862 | 747 | 750 | 792 | 885 | 939 | 6.10% |
| CIS | 1208 | 1341 | 1411 | 1615 | 1962 | 1984 | 2022 | 1819 | -10.04% |
| MGT | 318 | 291 | 295 | 216 | 411 | 363 | 375 | 345 | -8.00% |
| MKT | 231 | 210 | 232 | 189 | 156 | 243 | 249 | 282 | 13.25% |
| OS | 1117 | 1020 | 819 | 972 | 830 | 822 | 844 | 763 | -9.60% |
| PAR (moved from Social Science) | | | | 103 | 140 | 152 | 153 | 180 | 17.65% |
| RSM | 365 | 457 | 466 | 544 | 686 | 858 | 704 | 785 | 11.51% |
| Business | 5128 | 5164 | 4976 | 5507.5 | 5963.5 | 6271 | 6332 | 6191 | -2.23% |
| COM | 308 | 301 | 404 | 352 | 412 | 428 | 434 | 436 | 0.46% |
| ENG | 4208 | 4445 | 4765 | 4509 | 4542 | 4653 | 4820 | 5340 | 10.79% |
| MLA | 120 | 157 | 157 | 90 | 0 | 84 | 0 | 0 | 0.00% |
| MLF | 0 | 40 | 46 | 40 | 64 | 72 | 80 | 68 | -15.00% |
| MLG | 110 | 0 | 44 | 32 | 32 | 68 | 48 | 44 | -8.33% |
| MLJ | 0 | 60 | 12 | 0 | 0 | 0 | 0 | 0 | 0.00% |
| MLR | 84 | 0 | 0 | 0 | 0 | 0 | 0 | 0 | 0.00% |
| MLS | 213 | 202 | 321 | 273 | 284 | 360 | 244 | 304 | 24.59% |
| THR | 62 | 128 | 70 | 209 | 256 | 222 | 223 | 180 | -19.28% |
| Comm | 5105 | 5333 | 5819 | 5505 | 5590 | 5887 | 5849 | 6372 | 8.94% |
| HAH | 199 | 187 | 146 | 113 | 150 | 86 | 83 | 177 | 113.25% |
| HDA | 339 | 285 | 374 | 334 | 310 | 321 | 285 | 344 | 20.70% |
| HMA | 159 | 230 | 186 | 134 | 120 | 134 | 73 | 39 | -46.58% |
| HNR | 2951 | 2743 | 2273 | 1742 | 1654 | 1599 | 1482 | 1665 | 12.35% |
| HPD | 0 | 4 | 0.7 | 0.5 | 7.1 | 11 | 8.8 | 7.8 | -11.36% |
| Health Occ | 3648 | 3449 | 2979.7 | 2323.5 | 2241.1 | 2151 | 1931.8 | 2232.8 | 15.58% |
| ART | 1472 | 1290 | 1460 | 1497 | 1555 | 1527 | 1615 | 1633 | 1.11% |
| DNC | 56 | 55 | 60 | 52 | 52 | 44 | 63 | 66 | 4.76% |
| HST | 513 | 763 | 901 | 818 | 857 | 855 | 977 | 1033 | 5.73% |
| HJM | 120 | 129 | 123 | 108 | 126 | 218 | 255 | 200 | -21.57% |
| MUS | 633 | 624 | 767 | 684 | 669 | 641 | 638 | 663 | 3.92% |
| PHL | 538 | 701 | 851 | 928 | 800 | 898 | 1029 | 1002 | -2.62% |
| VCA | 292 | 312 | 282 | 344 | 589 | 600 | 427 | 529 | 23.89% |
| Hum | 3624 | 3874 | 4444 | 4431 | 4648 | 4783 | 5004 | 5126 | 2.44% |



Traverse City Campuses Contact Hours (continued)

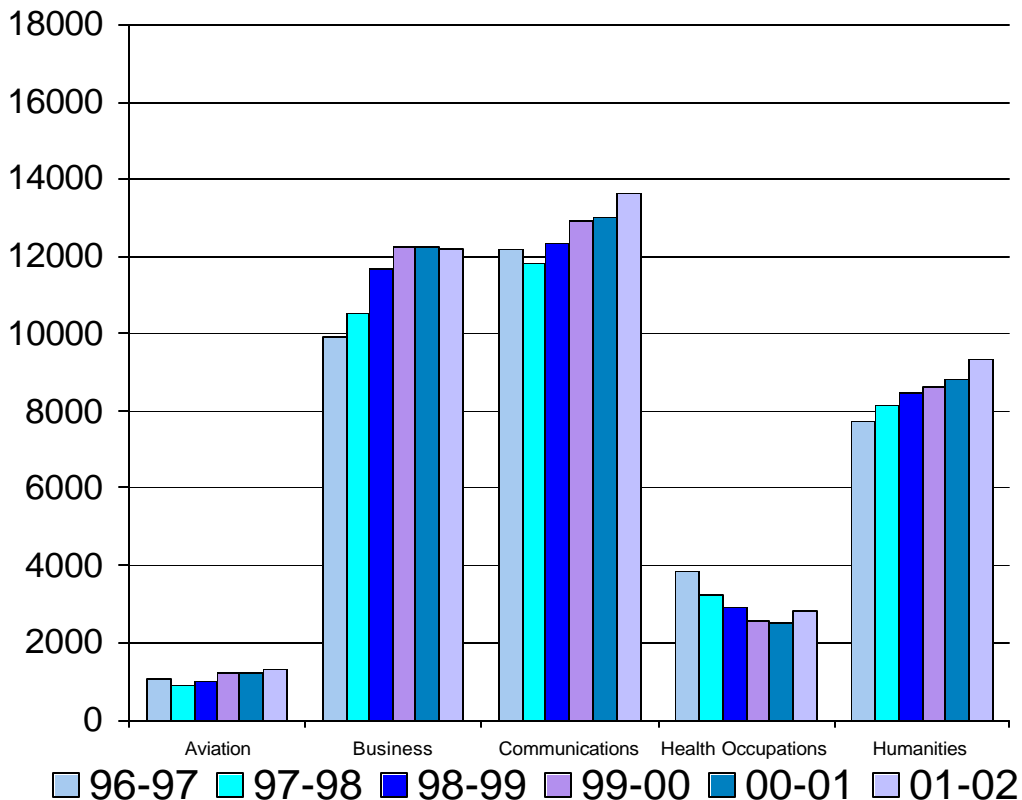
| | Spring 95 | Spring 96 | Spring 97 | Spring 98 | Spring 99 | Spring 00 | Spring 01 | Spring 02 | |
|---------------------|--------------|--------------|----------------|---------------------|----------------|----------------|----------------|----------------|---------------|
| MDK | 901 | 1172 | 1403 | 1336 | 883 | 709 | 723 | 909 | 25.73% |
| MNG | 481 | 425 | 530 | 590 | 521 | 326 | 364 | 570 | 56.59% |
| MNS | 32 | 32 | 68 | 56 | 54 | 32 | 64 | 88 | 37.50% |
| Maritime | 1414 | 1629 | 2001 | 1982 | 1458 | 1067 | 1151 | 1567 | 36.14% |
| HF | 583 | 450 | 580 | 594 | 614 | 564 | 588 | 588 | 0.00% |
| OUT | 272 | 306 | 330 | 256 | 264 | 268 | 210 | 258 | 22.86% |
| PE | 488 | 495 | 342 | 370 | 370 | 396 | 326 | 499 | 53.07% |
| Phys Ed | 1343 | 1251 | 1252 | 1220 | 1248 | 1228 | 1124 | 1345 | 19.66% |
| AST | 293 | 245 | 250 | 245 | 290 | 280 | 305 | 305 | 0.00% |
| BIO | 4251 | 4141 | 4291 | 3864 | 4095 | 4058 | 4183 | 4480 | 7.10% |
| CHM | 2399 | 2130 | 2058 | 2066 | 1736 | 1920 | 1616 | 1703 | 5.38% |
| EGR | 454 | 460 | 437 | 392 | 369 | 452 | 441 | 445 | 0.91% |
| ENV | 711 | 840 | 666 | 749 | 930 | 1010 | 953 | 1128 | 18.36% |
| MTH | 7495 | 7856 | 7868 | 8417 | 8533 | 9309 | 9502 | 10329 | 8.70% |
| PHY | 1136 | 1051 | 882 | 862 | 740 | 942 | 974 | 953 | -2.16% |
| Sci/Math | 16739 | 16723 | 16452 | 16595 | 16693 | 17971 | 17974 | 19343 | 7.62% |
| CD | 470 | 467 | 737 | 826 | 799 | 797 | 762 | 793 | 4.07% |
| COR | 0 | 441 | 168 | 99 | 510 | 341 | 491 | 468 | -4.68% |
| CJ | 654 | 529 | 429 | 408 | 404 | 282 | 243 | 0 | -100.00% |
| ECO | 981 | 981 | 957 | 1152 | 1176 | 1197 | 1185 | 1353 | 14.18% |
| EDU | 180 | 261 | 228 | 282 | 234 | 208 | 231 | 175 | -24.24% |
| GEO | 457 | 428 | 380 | 332 | 453 | 443 | 425 | 568 | 33.65% |
| LWE | 725 | 746 | 614 | 600 | 711 | 679 | 770 | 879 | 14.16% |
| PAR | 492 | 491 | 488 | (moved to Business) | | | | | |
| PLS | 2356 | 2076 | 2013 | 2187 | 2307 | 2367 | 2415 | 1752 | -27.45% |
| PSY | 3227 | 3130 | 3040 | 3115 | 3354 | 3478 | 3531 | 3892 | 10.22% |
| SDC | 423 | 395 | 390 | 351 | 398.5 | 368.5 | 362 | 270.5 | -25.28% |
| SOC | 1623 | 1198 | 1398 | 1312 | 1290 | 1427 | 1452 | 1584 | 9.09% |
| SWK | 190 | 293 | 246 | 265 | 247 | 213 | 293 | 276 | -5.80% |
| Soc Scienc | 11778 | 11436 | 11088 | 10929 | 11883.5 | 11800.5 | 12160 | 12010.5 | -1.23% |
| AUT | 1041 | 1141 | 768 | 805 | 925 | 934 | 611 | 851 | 39.28% |
| EET | 775 | 705 | 616 | 507 | 611 | 545 | 420 | 530 | 26.19% |
| ITD | | | | | | | | 41 | 100.00% |
| ITH | | | | | | | | 125 | 100.00% |
| ITDP | | | | | | | | 15 | 100.00% |
| MFG | 2364 | 2302 | 2270 | 2083 | 2179 | 1732 | 1675 | 1728 | 3.16% |
| TDP | 0 | 0 | 0 | 0 | 8 | 14 | 0 | 0 | 0.00% |
| WPT | 264 | 234 | 185 | 251 | 257 | 288 | 299 | 414 | 38.46% |
| Technical | 4444 | 4382 | 3839 | 3646 | 3980 | 3513 | 3005 | 3704 | 23.26% |
| Campus Total | 72459 | 72570 | 73114.5 | 72226.1 | 75004.2 | 76900.5 | 76244.3 | 80748.1 | 5.91% |



1997 1998 1999 2000 2001 2002

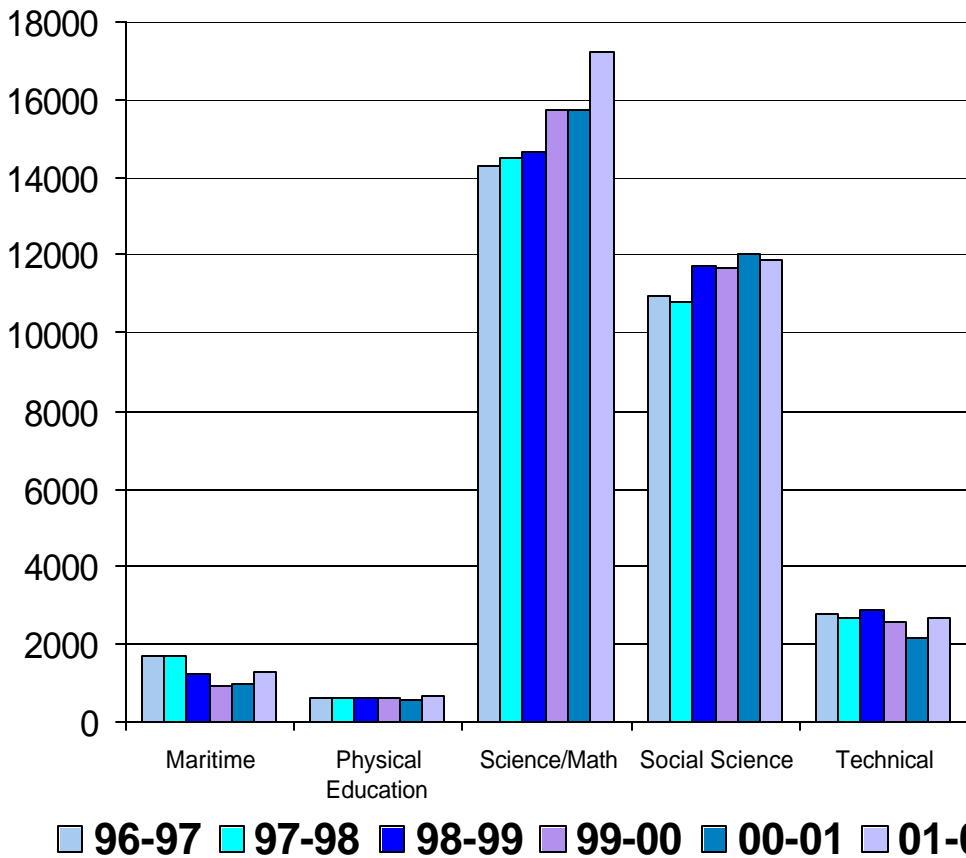
Traverse City Campuses Yearly Credit Hours (Fall and Spring)

| | 94-95 | 95-96 | 96-97 | 97-98 | 98-99 | 99-00 | 00-01 | 01-02 | % Change |
|------------------------------------|--------------|---------------|---------------|----------------|----------------|--------------|---------------|---------------|---------------|
| AVF | 493 | 506 | 473 | 347 | 439 | 483 | 456 | 511 | 12.06% |
| AVG | 638 | 674 | 614 | 557 | 584 | 742 | 793 | 807 | 1.77% |
| Aviation | 1131 | 1180 | 1087 | 904 | 1023 | 1225 | 1249 | 1318 | 5.52% |
| ACC | 2336 | 2219 | 2104 | 2227 | 2191 | 2138 | 2280 | 2263 | -0.75% |
| BPD | 0 | 0 | 0 | 0 | 0 | 0 | 0 | 0 | 0.00% |
| BFI | 0 | 18 | 0 | 30 | 0 | 45 | 64 | 19 | -70.31% |
| BPD | 0 | 0 | 0 | 37.5 | 80.5 | 80 | 52 | 15 | -71.15% |
| BUS | 1689 | 1666 | 1765 | 1659 | 1674 | 1767 | 1782 | 1896 | 6.40% |
| CIS | 2264 | 2514 | 2758 | 2962 | 3642 | 3833 | 3884 | 3850 | -0.88% |
| MGT | 672 | 597 | 577 | 444 | 651 | 662 | 696 | 651 | -6.47% |
| MKT | 452 | 372 | 373 | 375 | 327 | 483 | 513 | 525 | 2.34% |
| OIS | 2068 | 2021 | 1590 | 1711 | 1747 | 1672 | 1541 | 1528 | -0.84% |
| PAR (moved from Social Science) | | | | 327 | 365 | 340 | 368 | 381 | 3.53% |
| RSM | 823 | 854 | 768 | 762 | 1006 | 1231 | 1054 | 1066 | 1.14% |
| Business | 10304 | 10261 | 9935 | 10534.5 | 11683.5 | 12251 | 12234 | 12194 | -0.33% |
| COM | 603 | 619 | 735 | 760 | 832 | 860 | 884 | 888 | 0.45% |
| ENG | 8787 | 9364 | 9890 | 9396 | 9895 | 10333 | 10699 | 11397 | 6.52% |
| MLA | 342 | 452 | 453 | 359 | 96 | 233 | 0 | 0 | 0.00% |
| MLF | 76 | 160 | 98 | 140 | 156 | 140 | 216 | 220 | 1.85% |
| MLG | 260 | 0 | 104 | 139 | 112 | 136 | 188 | 148 | -21.28% |
| MLJ | 3 | 130 | 44 | 0 | 0 | 0 | 0 | 0 | 0.00% |
| MLR | 84 | 0 | 0 | 0 | 0 | 0 | 0 | 0 | 0.00% |
| MLS | 542 | 538 | 651 | 683 | 724 | 808 | 580 | 808 | 39.31% |
| THR | 142 | 227 | 214 | 336 | 506 | 414 | 419 | 180 | -57.04% |
| Comm | 10839 | 11490 | 12189 | 11813 | 12321 | 12924 | 12986 | 13641 | 5.04% |
| HAH | 357 | 386 | 354 | 285 | 327 | 269 | 266 | 303 | 13.91% |
| HDA | 541 | 408 | 508 | 559 | 527 | 517 | 417 | 487 | 16.79% |
| HMA | 262 | 324 | 335 | 224 | 195 | 240 | 102 | 143 | 40.20% |
| HNR | 2913 | 2668 | 2640 | 2186 | 1838 | 1846 | 1706 | 1889 | 10.73% |
| HPD | 0 | 14.5 | 2.5 | 0.6 | 19.2 | 20 | 30.3 | 14.6 | -51.82% |
| Health Occ | 4073 | 3800.5 | 3839.5 | 3254.6 | 2906.2 | 2892 | 2521.3 | 2836.6 | 12.51% |
| ART | 2680 | 2180 | 2315 | 2529 | 2764 | 2669 | 2808 | 2924 | 4.13% |
| DNC | 64 | 53 | 56 | 64 | 48 | 52 | 77 | 76 | -1.30% |
| HST | 1003 | 1349 | 1617 | 1718 | 1778 | 1849 | 1875 | 2001 | 6.72% |
| HUM | 216 | 234 | 231 | 213 | 246 | 448 | 462 | 423 | -8.44% |
| MUS | 1190 | 1104 | 1405 | 1254 | 1260 | 1101 | 1144 | 1176 | 2.80% |
| PHL | 900 | 1500 | 1653 | 1710 | 1642 | 1777 | 1895 | 2010 | 6.07% |
| VCA | 530 | 515 | 441 | 640 | 739 | 735 | 558 | 711 | 27.42% |
| Hum | 6583 | 6935 | 7718 | 8128 | 8477 | 8631 | 8819 | 9321 | 5.69% |



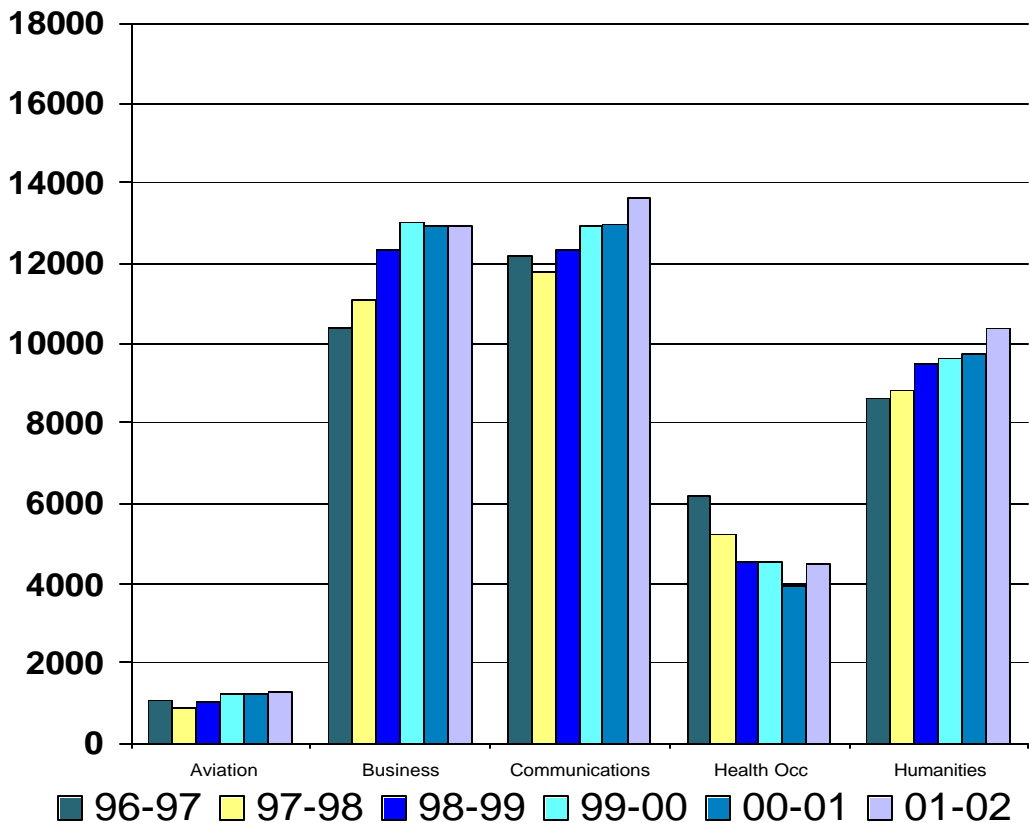
Traverse City Campuses Yearly Credit Hours (Fall and Spring) (continued)

| | 94-95 | 95-96 | 96-97 | 97-98 | 98-99 | 99-00 | 00-01 | 01-02 | % Change |
|---------------------|--------------|--------------|----------------|---------------------|----------------|----------------|----------------|----------------|---------------|
| MDK | 778 | 998 | 1233 | 1153 | 765 | 616 | 610 | 760 | 24.59% |
| MNG | 409 | 343 | 409 | 493 | 418 | 262 | 297 | 425 | 43.10% |
| MNS | 32 | 32 | 68 | 56 | 54 | 32 | 64 | 88 | 37.50% |
| Maritime | 1219 | 1373 | 1710 | 1702 | 1237 | 910 | 971 | 1273 | 31.10% |
| HF | 224.5 | 232.5 | 299 | 300 | 307 | 282 | 294 | 294 | 0.00% |
| OUT | 131 | 153 | 165 | 128 | 132 | 134 | 105 | 129 | 22.86% |
| PE | 225.5 | 248 | 171 | 185 | 185 | 198 | 163 | 250 | 53.37% |
| Phys Ed | 581 | 633.5 | 635 | 613 | 624 | 614 | 562 | 673 | 19.75% |
| AST | 235 | 196 | 200 | 196 | 232 | 224 | 244 | 244 | 0.00% |
| BIO | 3270 | 3210 | 3324 | 2980 | 3169 | 3159 | 3245 | 3463 | 6.72% |
| CHM | 1730 | 1524 | 1467 | 1491 | 1250 | 1375 | 1156 | 1240 | 7.27% |
| EGR | 406 | 416 | 406 | 354 | 334 | 413 | 398 | 401 | 0.75% |
| ENV | 570 | 676 | 534 | 602 | 744 | 808 | 760 | 902 | 18.68% |
| MTH | 7495 | 7737 | 7719 | 7246 | 8369 | 9034 | 9244 | 10329 | 11.74% |
| PHY | 836 | 773 | 646 | 638 | 543 | 692 | 703 | 687 | -2.28% |
| Sci/Math | 14542 | 14532 | 14296 | 14507 | 14641 | 15705 | 15750 | 17266 | 9.63% |
| CD | 470 | 467 | 737 | 826 | 799 | 797 | 762 | 793 | 4.07% |
| CJ | 654 | 529 | 429 | 99 | 404 | 341 | 491 | 468 | -4.68% |
| COR | 0 | 441 | 168 | 408 | 510 | 282 | 243 | 0 | -100.00% |
| ECO | 981 | 981 | 957 | 1152 | 1176 | 1197 | 1185 | 1353 | 14.18% |
| EDU | 180 | 174 | 152 | 188 | 156 | 139 | 156 | 151 | -3.21% |
| GEO | 428 | 397 | 366 | 310 | 429 | 424 | 403 | 539 | 33.75% |
| LWE | 725 | 702 | 580 | 566 | 669 | 633 | 732 | 829 | 13.25% |
| PAR | 492 | 491 | 488 | (moved to Business) | | | | | |
| PLS | 2356 | 2076 | 2013 | 2187 | 2307 | 2367 | 2415 | 1752 | -27.45% |
| PSY | 3227 | 3130 | 3040 | 3115 | 3354 | 3478 | 3531 | 3892 | 10.22% |
| SDC | 423 | 395 | 390 | 351 | 398.5 | 368.5 | 362 | 270.5 | -25.28% |
| SOC | 1623 | 1198 | 1398 | 1312 | 1290 | 1427 | 1452 | 1584 | 9.09% |
| SWK | 190 | 293 | 246 | 265 | 247 | 213 | 293 | 276 | -5.80% |
| Soc Sci | 11749 | 11274 | 10964 | 10779 | 11739.5 | 11666.5 | 12025 | 11907.5 | -0.98% |
| AUT | 845 | 923 | 614 | 661 | 743 | 748 | 505 | 689 | 36.44% |
| EET | 533 | 471 | 412 | 352 | 414 | 367 | 288 | 361 | 25.35% |
| ITD | | | | | | | | 41 | 100.00% |
| ITH | | | | | | | | 92 | 100.00% |
| ITPD | | | | | | | | 15 | 100.00% |
| MFG | 1712 | 1663 | 1643 | 1508 | 1538 | 1243 | 1194 | 1203 | 0.75% |
| TPD | 0 | 0 | 0 | 0 | 4 | 7 | 0 | 0 | 0.00% |
| WPT | 176 | 156 | 121 | 165 | 168 | 189 | 192 | 267 | 39.06% |
| Technical | 3266 | 3213 | 2790 | 2686 | 2867 | 2554 | 2179 | 2668 | 22.44% |
| Campus Total | 64287 | 64692 | 65163.5 | 64921.1 | 67519.2 | 69372.5 | 69296.3 | 73098.1 | 5.49% |



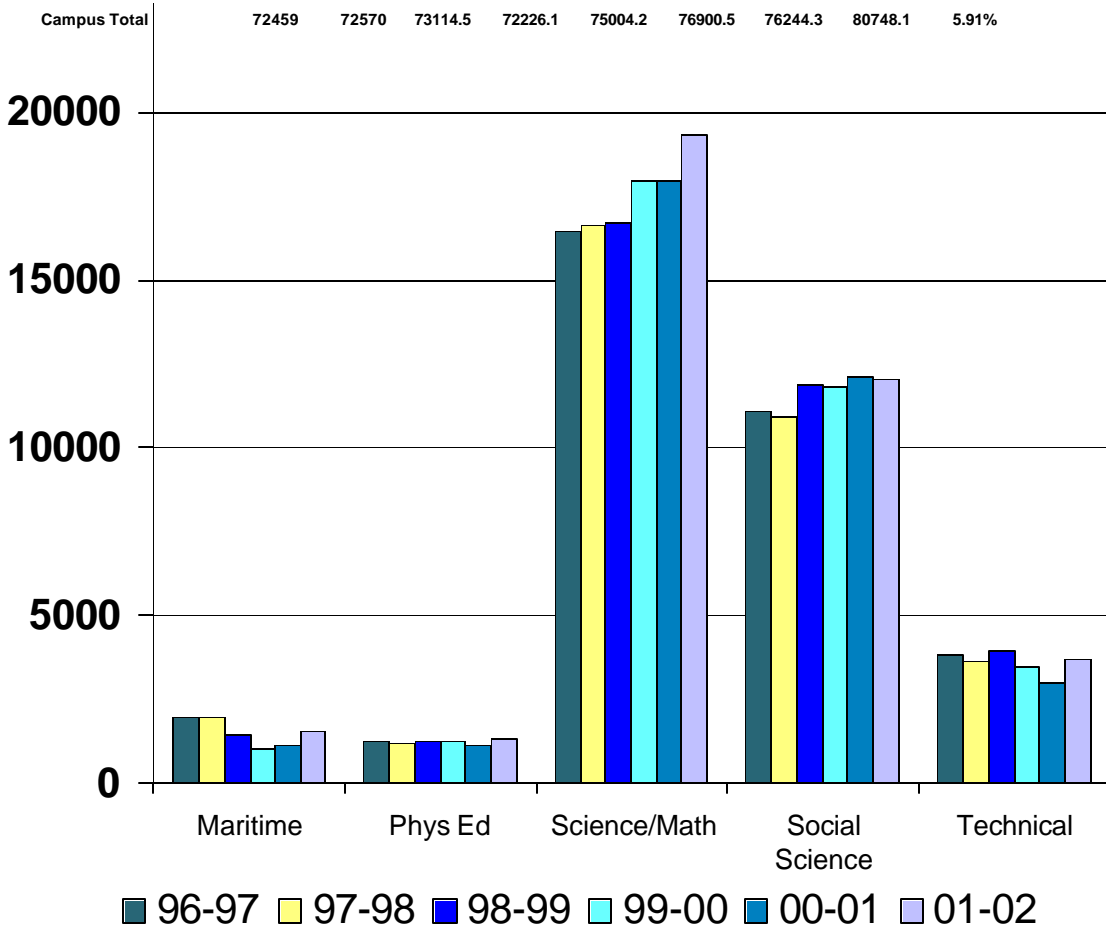
Traverse City Campuses Yearly Contact Hours (Fall and Spring)

| | 94-95 | 95-96 | 96-97 | 97-98 | 98-99 | 99-00 | 00-01 | 01-02 | % Change |
|-------------------|-----------------------------|--------------|---------------|----------------|----------------|--------------|---------------|---------------|---------------|
| AVF | 493 | 506 | 473 | 347 | 439 | 483 | 456 | 511 | 12.06% |
| AVG | 638 | 674 | 614 | 557 | 584 | 742 | 745 | 807 | 8.32% |
| Aviation | 1131 | 1180 | 1087 | 904 | 1023 | 1225 | 1201 | 1318 | 9.74% |
| ACC | 2336 | 2219 | 2104 | 2227 | 2191 | 2138 | 2280 | 2263 | -0.75% |
| BFI | 0 | 18 | 0 | 30 | 0 | 0 | 0 | 0 | 0.00% |
| BDP | 0 | 0 | 0 | 37.5 | 80.5 | 125 | 116 | 34 | -70.69% |
| BUS | 1689 | 1666 | 1765 | 1659 | 1674 | 1767 | 1782 | 1896 | 6.40% |
| CIS | 2264 | 2514 | 2758 | 2962 | 3642 | 3833 | 3884 | 3850 | -0.88% |
| MGT | 672 | 597 | 577 | 444 | 651 | 662 | 696 | 651 | -6.47% |
| MKT | 452 | 372 | 373 | 375 | 327 | 483 | 513 | 525 | 2.34% |
| OIS | 2256 | 2193 | 1750 | 1895 | 1909 | 1852 | 1750 | 1724 | -1.49% |
| PAR | (moved from Social Science) | | | 327 | 365 | 340 | 368 | 381 | 3.53% |
| RSM | 1043 | 1138 | 1064 | 1123 | 1508 | 1795 | 1546 | 1622 | 4.92% |
| Business | 10712 | 10717 | 10391 | 11079.5 | 12347.5 | 12995 | 12935 | 12946 | 0.09% |
| COM | 603 | 619 | 735 | 760 | 832 | 860 | 884 | 888 | 0.45% |
| ENG | 8787 | 9364 | 9890 | 9396 | 9895 | 10333 | 10699 | 11397 | 6.52% |
| MLA | 342 | 452 | 453 | 359 | 96 | 233 | 0 | 0 | 0.00% |
| MLF | 76 | 160 | 98 | 140 | 156 | 140 | 216 | 220 | 1.85% |
| MLG | 260 | 0 | 104 | 139 | 112 | 136 | 188 | 148 | -21.28% |
| MLJ | 3 | 130 | 44 | 0 | 0 | 0 | 0 | 0 | 0.00% |
| MLR | 84 | 0 | 0 | 0 | 0 | 0 | 0 | 0 | 0.00% |
| MLS | 542 | 538 | 651 | 683 | 724 | 808 | 580 | 808 | 39.31% |
| THR | 142 | 227 | 214 | 336 | 506 | 414 | 419 | 180 | -57.04% |
| Comm | 10839 | 11490 | 12189 | 11813 | 12321 | 12924 | 12986 | 13641 | 5.04% |
| HAH | 387 | 406 | 383 | 303 | 351 | 291 | 297 | 335 | 12.79% |
| HDA | 608 | 456 | 582 | 624 | 590 | 589 | 469 | 543 | 15.78% |
| HMA | 286 | 348 | 375 | 242 | 215 | 268 | 106 | 171 | 61.32% |
| HNR | 5291 | 4816 | 4868 | 4064 | 3396 | 3384 | 3046 | 3443 | 13.03% |
| HPD | 0 | 15 | 2.5 | 0.6 | 19.2 | 20 | 30.3 | 14.6 | -51.82% |
| Health Occ | 6572 | 6041 | 6210.5 | 5233.6 | 4571.2 | 4552 | 3948.3 | 4506.6 | 14.14% |
| ART | 3213 | 2639 | 2855 | 3027 | 3323 | 3222 | 3351 | 3501 | 4.48% |
| DNC | 128 | 103 | 112 | 128 | 96 | 104 | 151 | 150 | -0.66% |
| HST | 1003 | 1349 | 1617 | 1718 | 1778 | 1849 | 1875 | 2001 | 6.72% |
| HUM | 216 | 234 | 231 | 213 | 246 | 448 | 462 | 423 | -8.44% |
| MUS | 1324 | 1210 | 1553 | 1422 | 1409 | 1245 | 1283 | 1337 | 4.21% |
| PHL | 900 | 1500 | 1653 | 1710 | 1642 | 1777 | 1895 | 2010 | 6.07% |
| VCA | 703 | 686 | 584 | 606 | 985 | 980 | 743 | 945 | 27.19% |
| Hum | 7487 | 7721 | 8605 | 8824 | 9479 | 9625 | 9760 | 10367 | 6.22% |



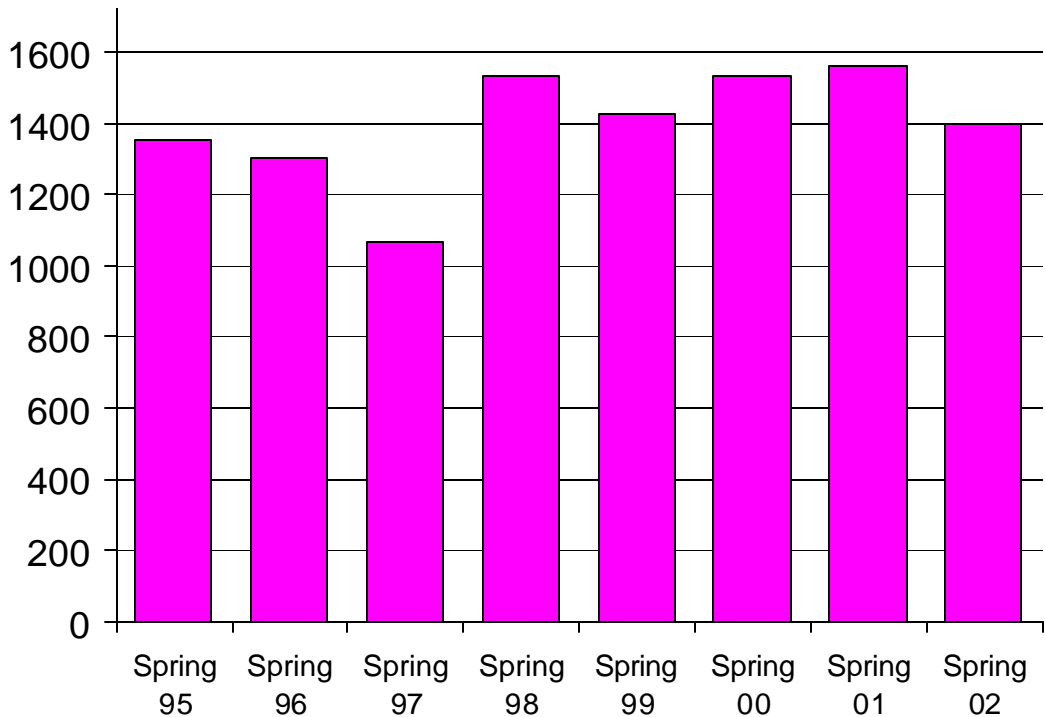
Traverse City Campuses Yearly Contact Hours (Fall and Spring) (continued)

| | 94-95 | 95-96 | 96-97 | 97-98 | 98-99 | 99-00 | 00-01 | 01-02 | % Change |
|---------------------|--------------|--------------|----------------|---------------------|----------------|----------------|----------------|----------------|---------------|
| MDK | 901 | 1172 | 1403 | 1336 | 883 | 709 | 723 | 909 | 25.73% |
| MNG | 481 | 425 | 530 | 590 | 521 | 326 | 364 | 570 | 56.59% |
| MNS | 32 | 32 | 68 | 56 | 54 | 32 | 64 | 88 | 37.50% |
| Maritime | 1414 | 1629 | 2001 | 1982 | 1458 | 1067 | 1151 | 1567 | 36.14% |
| HF | 583 | 450 | 580 | 594 | 614 | 564 | 588 | 588 | 0.00% |
| OUT | 272 | 306 | 330 | 256 | 264 | 268 | 210 | 258 | 22.86% |
| PE | 488 | 495 | 342 | 370 | 370 | 396 | 326 | 499 | 53.07% |
| Phys Ed | 1343 | 1251 | 1252 | 1220 | 1248 | 1228 | 1124 | 1345 | 19.66% |
| AST | 293 | 245 | 250 | 245 | 290 | 280 | 305 | 305 | 0.00% |
| BIO | 4251 | 4141 | 4291 | 3864 | 4095 | 4058 | 4183 | 4480 | 7.10% |
| CHM | 2399 | 2130 | 2058 | 2066 | 1736 | 1920 | 1616 | 1703 | 5.38% |
| EGR | 454 | 460 | 437 | 392 | 369 | 452 | 441 | 445 | 0.91% |
| ENV | 711 | 840 | 666 | 749 | 930 | 1010 | 953 | 1128 | 18.36% |
| MTH | 7495 | 7856 | 7868 | 8417 | 8533 | 9309 | 9502 | 10329 | 8.70% |
| PHY | 1136 | 1051 | 882 | 862 | 740 | 942 | 974 | 953 | -2.16% |
| Sci/Math | 16739 | 16723 | 16452 | 16595 | 16693 | 17971 | 17974 | 19343 | 7.62% |
| CD | 470 | 467 | 737 | 826 | 799 | 797 | 762 | 793 | 4.07% |
| COR | 0 | 441 | 168 | 99 | 510 | 341 | 491 | 468 | -4.68% |
| CJ | 654 | 529 | 429 | 408 | 404 | 282 | 243 | 0 | -100.00% |
| ECO | 981 | 981 | 957 | 1152 | 1176 | 1197 | 1185 | 1353 | 14.18% |
| EDU | 180 | 261 | 228 | 282 | 234 | 208 | 231 | 175 | -24.24% |
| GEO | 457 | 428 | 380 | 332 | 453 | 443 | 425 | 568 | 33.65% |
| LWE | 725 | 746 | 614 | 600 | 711 | 679 | 770 | 879 | 14.16% |
| PAR | 492 | 491 | 488 | (moved to Business) | | | | | |
| PLS | 2356 | 2076 | 2013 | 2187 | 2307 | 2367 | 2415 | 1752 | -27.45% |
| PSY | 3227 | 3130 | 3040 | 3115 | 3354 | 3478 | 3531 | 3892 | 10.22% |
| SDC | 423 | 395 | 390 | 351 | 398.5 | 368.5 | 362 | 270.5 | -25.28% |
| SOC | 1623 | 1198 | 1398 | 1312 | 1290 | 1427 | 1452 | 1584 | 9.09% |
| SWK | 190 | 293 | 246 | 265 | 247 | 213 | 293 | 276 | -5.80% |
| Soc Scienc | 11778 | 11436 | 11088 | 10929 | 11883.5 | 11800.5 | 12160 | 12010.5 | -1.23% |
| AUT | 1041 | 1141 | 768 | 805 | 925 | 934 | 611 | 851 | 39.28% |
| EET | 775 | 705 | 616 | 507 | 611 | 545 | 420 | 530 | 26.19% |
| ITD | | | | | | | | 41 | 100.00% |
| ITH | | | | | | | | 125 | 100.00% |
| ITDP | | | | | | | | 15 | 100.00% |
| MFG | 2364 | 2302 | 2270 | 2083 | 2179 | 1732 | 1675 | 1728 | 3.16% |
| TDP | 0 | 0 | 0 | 0 | 8 | 14 | 0 | 0 | 0.00% |
| WPT | 264 | 234 | 185 | 251 | 257 | 288 | 299 | 414 | 38.46% |
| Technical | 4444 | 4382 | 3839 | 3646 | 3980 | 3513 | 3005 | 3704 | 23.26% |
| Campus Total | 72459 | 72570 | 73114.5 | 72226.1 | 75004.2 | 76900.5 | 76244.3 | 80748.1 | 5.91% |



Cadillac Campus Credit Hours

| | Spring 95 | Spring 96 | Spring 97 | Spring 98 | Spring 99 | Spring 00 | Spring 01 | Spring 02 | % Change |
|------------------------------|-------------|---------------|-------------|----------------------------------|-------------|-------------|-------------|-------------|----------------|
| ACC | 44 | 0 | 0 | 0 | 0 | 0 | 0 | 24 | 100.00% |
| BUS | 90 | 93 | 0 | 24 | 33 | 27 | 48 | 21 | -56.25% |
| CIS | 98 | 72 | 76 | 78 | 54 | 51 | 87 | 62 | -28.74% |
| MGT | 33 | 0 | 0 | 0 | 0 | 0 | 0 | 0 | 0.00% |
| MKT | 0 | 0 | 0 | 0 | 0 | 0 | 0 | 0 | 0.00% |
| OIS | 0 | 36 | 0 | 0 | 0 | 0 | 0 | 0 | 0.00% |
| PAR | | moved from SS | | 0 | 0 | 0 | 0 | 0 | 0.00% |
| Business | 265 | 201 | 76 | 102 | 87 | 78 | 135 | 107 | -20.74% |
| COM | 44 | 44 | 60 | 36 | 60 | 60 | 48 | 80 | 66.67% |
| ENG | 258 | 201 | 296 | 329 | 267 | 231 | 309 | 336 | 8.74% |
| MLS | 0 | 0 | 0 | 0 | 0 | 0 | 0 | 0 | 0.00% |
| Comm | 302 | 245 | 356 | 365 | 327 | 291 | 357 | 416 | 16.53% |
| HAH | 27 | 24 | 12 | 4 | 12 | 9 | 0 | 9 | 100.00% |
| HNR | 0 | 0 | 0 | 35 | 0 | 24 | 10 | 14 | 40.00% |
| Health Occ | 27 | 24 | 12 | 39 | 12 | 33 | 10 | 23 | 130.00% |
| ART | 0 | 0 | 0 | 0 | 0 | 0 | 0 | 0 | 0.00% |
| HST | 88 | 110 | 76 | 165 | 167 | 231 | 191 | 132 | -30.89% |
| MUS | 0 | 0 | 0 | 15 | 0 | 0 | 12 | 0 | 0.00% |
| PHL | 69 | 0 | 39 | 60 | 69 | 102 | 60 | 36 | -40.00% |
| Hum | 157 | 110 | 115 | 240 | 236 | 333 | 263 | 168 | -36.12% |
| HF | 9 | 12 | 8 | 22 | 13 | 9 | 20 | 11 | -45.00% |
| PE | 0 | 3 | 2 | 0 | 0 | 0 | 0 | 0 | 0.00% |
| Phys Ed | 9 | 15 | 10 | 22 | 13 | 9 | 20 | 11 | -45.00% |
| BIO | 0 | 52 | 72 | 96 | 76 | 84 | 76 | 88 | 15.79% |
| CHM | 56 | 48 | 44 | 68 | 56 | 44 | 68 | 64 | -5.88% |
| ENV | 48 | 48 | 0 | 0 | 48 | 0 | 0 | 0 | 0.00% |
| MTH | 146 | 214 | 236 | 188 | 223 | 289 | 223 | 184 | -17.49% |
| Sci/Math | 250 | 362 | 352 | 352 | 403 | 417 | 367 | 336 | -8.45% |
| CD | 28 | 27 | 0 | 0 | 40 | 0 | 0 | 0 | 0.00% |
| CJ | | | | | | | 52 | 24 | -53.85% |
| COR | 0 | 75 | 0 | 0 | 0 | 0 | 0 | 0 | 0.00% |
| ECO | 45 | 0 | 0 | 0 | 0 | 0 | 63 | 42 | -33.33% |
| EDU | 0 | 0 | 22 | 0 | 0 | 0 | 0 | 0 | 0.00% |
| GEO | 0 | 0 | 0 | 39 | 45 | 0 | 36 | 42 | 100.00% |
| PAR | 0 | 0 | 0 | moved to the Business Discipline | | | | | |
| PLS | 63 | 60 | 30 | 72 | 33 | 72 | 63 | 63 | 0.00% |
| PSY | 108 | 150 | 81 | 198 | 153 | 249 | 120 | 114 | -5.00% |
| SOC | 69 | 36 | 15 | 102 | 75 | 48 | 75 | 51 | -32.00% |
| SWK | 27 | 0 | 0 | 0 | 0 | 0 | 0 | 0 | 0.00% |
| Soc Sci | 340 | 348 | 148 | 411 | 346 | 369 | 409 | 336 | -17.85% |
| Cadillac Campus Total | 1350 | 1305 | 1069 | 1531 | 1424 | 1530 | 1561 | 1397 | -10.51% |



Cadillac Campus Contact Hours

| | Spring 95 | Spring 96 | Spring 97 | Spring 98 | Spring 99 | Spring 00 | Spring 01 | Spring 02 | % Change |
|------------------------------|---------------------------|-------------|---------------------|-------------|-------------|-------------|-------------|-------------|----------------|
| ACC | 44 | 0 | 0 | 0 | 0 | 0 | 0 | 24 | 100.00% |
| BUS | 90 | 93 | 0 | 24 | 33 | 27 | 48 | 21 | -56.25% |
| CIS | 98 | 72 | 76 | 78 | 54 | 51 | 87 | 62 | -28.74% |
| MGT | 33 | 0 | 0 | 0 | 0 | 0 | 0 | 0 | 0.00% |
| MKT | 0 | 0 | 0 | 0 | 0 | 0 | 0 | 0 | 0.00% |
| OIS | 0 | 36 | 0 | 0 | 0 | 0 | 0 | 0 | 0.00% |
| PAR | moved from Social Science | | | 0 | 0 | 0 | 0 | 0 | 0.00% |
| Business | 265 | 201 | 76 | 102 | 87 | 78 | 135 | 107 | -20.74% |
| COM | 44 | 44 | 60 | 36 | 60 | 60 | 48 | 80 | 66.67% |
| ENG | 258 | 201 | 296 | 329 | 267 | 231 | 309 | 336 | 8.74% |
| MLS | 0 | 0 | 0 | 0 | 0 | 0 | 0 | 0 | 0.00% |
| Comm | 302 | 245 | 356 | 365 | 327 | 291 | 357 | 416 | 16.53% |
| HAH | 27 | 24 | 12 | 4 | 12 | 9 | 0 | 9 | 100.00% |
| HNR | 0 | 0 | 0 | 35 | 0 | 24 | 10 | 14 | 40.00% |
| Health Occ | 27 | 24 | 12 | 39 | 12 | 33 | 10 | 23 | 130.00% |
| ART | 0 | 0 | 0 | 0 | 0 | 0 | 0 | 0 | 0.00% |
| HST | 88 | 110 | 76 | 165 | 167 | 231 | 191 | 132 | -30.89% |
| MUS | 0 | 0 | 0 | 15 | 0 | 0 | 12 | 0 | 100.00% |
| PHL | 69 | 0 | 39 | 60 | 69 | 102 | 60 | 36 | -40.00% |
| Hum | 157 | 110 | 115 | 240 | 236 | 333 | 263 | 168 | -36.12% |
| HF | 18 | 24 | 16 | 44 | 26 | 18 | 40 | 22 | -45.00% |
| PE | 0 | 6 | 4 | 0 | 0 | 0 | 0 | 0 | 0.00% |
| Phys Ed | 18 | 30 | 20 | 44 | 26 | 18 | 40 | 22 | -45.00% |
| BIO | 0 | 65 | 90 | 120 | 95 | 105 | 95 | 110 | 15.79% |
| CHM | 70 | 60 | 55 | 85 | 70 | 55 | 85 | 80 | -5.88% |
| ENV | 60 | 60 | 246 | 188 | 60 | 0 | 0 | 0 | 0.00% |
| MTH | 146 | 225 | 0 | 0 | 223 | 296 | 223 | 184 | -17.49% |
| Sci/Math | 276 | 410 | 391 | 393 | 448 | 456 | 403 | 374 | -7.20% |
| CD | 28 | 27 | 0 | 0 | 40 | 0 | 0 | 0 | 0.00% |
| CJ | | | | | | | 52 | 24 | -53.85% |
| COR | 0 | 75 | 0 | 0 | 0 | 0 | 0 | 0 | 0.00% |
| ECO | 45 | 0 | 0 | 0 | 0 | 0 | 63 | 42 | -33.33% |
| EDU | 0 | 0 | 33 | 0 | 0 | 0 | 0 | 0 | 0.00% |
| GEO | 0 | 0 | 0 | 39 | 45 | 0 | 36 | 42 | -100.00% |
| PAR | 0 | 0 | 0 moved to Business | | | | | | |
| PLS | 63 | 60 | 30 | 72 | 33 | 72 | 63 | 63 | 0.00% |
| PSY | 108 | 150 | 81 | 198 | 153 | 249 | 120 | 114 | -5.00% |
| SOC | 69 | 36 | 15 | 102 | 75 | 48 | 75 | 51 | -32.00% |
| SWK | 27 | 0 | 0 | 0 | 0 | 0 | 0 | 0 | 0.00% |
| Soc Sci | 340 | 348 | 159 | 411 | 346 | 369 | 409 | 336 | -17.85% |
| Cadillac Campus Total | 1385 | 1368 | 1129 | 1594 | 1482 | 1578 | 1617 | 1446 | -10.58% |

