



Enrollment Report
Spring Semester 2003
Report Day – February 3, 2003

Carol Taberski, Registrar, Interim Director of Admissions
Nancy McArthur, Records/Registration Technician

Spring Semester 2003
Report Day – February 3, 2003

Table of Contents

Summary	1
Academic Enrollment Report	3
Web Registration	4
TouchTone Registration	4
Dual Enrollment	4
Residency Chart	5
Gender Chart.....	5
Enrollment Status Chart	5
Traverse City Campuses Credit Hours by Discipline & Chart	6
Traverse City Campuses Credit Hours by Discipline & Chart (continued).....	7
Traverse City Campuses Contact Hours by Discipline & Chart	8
Traverse City Campuses Contact Hours by Discipline & Chart (continued)	9
Traverse City Campuses Yearly Credit Hours by Discipline & Chart.....	10
Traverse City Campuses Yearly Credit Hours by Discipline & Chart (continued)	11
Traverse City Campuses Yearly Contact Hours by Discipline & Chart	12
Traverse City Campuses Yearly Contact Hours by Discipline & Chart (continued).....	13
Cadillac Campus Credit Hours & Chart	14
Cadillac Campus Contact Hours & Chart	15
Appendix – Recruitment Plan	

Spring Semester 2003 Enrollment Report Summary

Spring Semester 2003, Northwestern Michigan College continues to show another healthy increase in student enrollment, credit hours, and contact hours. Total enrollments for spring are the highest they have been since Winter Term 1990 when enrollment was 4211. See page 4 or the Digital Dashboard at http://nmc.edu/webrpt/executive_summary/report_date/200302/sorexeco_spring.htm Included in the Digital Dashboard at this link are Financial Aid information about number of applicants, recipients, and award totals.

Spring Semester	2002 to 2003	Percent Change
Head Count	4,048 to 4,221	4.27
Credit Hours	36,943.8 to 38,958.6	5.45
Contact Hours	40,713.8 to 43,171.6	6.04

The Cadillac campus had an increase in student enrollment, going from 184 to 187, credit hours and contact hours are up. Credit hours went from 1397 to 1419, an increase of 1.57 percent. Contact hours went from 1446 to 1478, an increase of 2.21 percent. Cadillac continues to have a guaranteed schedule, assuring students classes offered will not be canceled. See pages 16 and 17 and the Digital Dashboard on page 4 or at http://nmc.edu/webrpt/executive_summary/report_date/200302/sorexeco_cad_spring.htm

The average credit load has increased each of the past six years with a 1.13 percent increase this year compared to 2002, going from 9.13 to 9.23. The number of full-time students increased by 6.94 percent to 1696 students. The number of students taking six to eleven credits increased by 1.01 percent to 1406. The number of students taking fewer than six credits increased by 4.58 percent to 1119. See page 3.

Enrollments around the state have shown increases at most community colleges. Of the 25 colleges reporting, all but three had increases in credit hours. See <http://www.macrao.org/ccweekly.asp>. Increases in credit hours around the state are between two and twenty-five percent. USA TODAY reports tuition increases at many state four-year public institutions are increasing at double-digit percentage rates. This, coupled with a continued high unemployment rate, may account for the large increases in community college enrollments. Loan applications to help pay for tuition increases are three times the total dollar amount for Spring 2003 over Spring 2002.

Web registration numbers continue to increase as telephone usage numbers continue to decrease. Web registration numbers went from 521 students to 860, an increase of 65 percent. Telephone registration numbers dropped from 387 to 275, a decrease of 29 percent.

Spring Semester 2003
Enrollment Report Summary
(continued)

The Health Occupations academic area showed a large increase in credit hours at 34.8 percent. Maritime head count increased by 23.9 percent. Humanities area was third in increases at 13.22 percent. The Technical area continues to increase during the past few semesters, at 9.57 percent, with the largest increases in new offerings. Three disciplines showed decreases, Aviation at 15.7 percent, Business at 3.50 percent, and Social Science at 1.93 percent. See pages seven and eight.

Total credit hours for both Fall and Spring show similar ranking of credit hours. The Health Occupations area showed a large increase in credit hours at 27.6 percent for both Fall and Spring. Maritime increased by 24.67 percent and Technical by 13.91 percent. Three academic areas showed decreases for the combined Fall and Spring semesters; Aviation at 9.56 percent, Business at 5.68 percent, and Social Science at 0.36 percent. See pages twelve and thirteen.

The Admissions office tracks students who make inquiries, students who apply, and students who register. New students registered increased from 1023 for Spring 2002 to 1200 for Spring 2003. Over 3500 letters were mailed during fall semester to students who made inquiries but did not apply. Over 700 letters were sent to students who had applied but did not register. Recruitment initiatives to increase inquiries include obtaining names of students in the service area who took the ACT test, the PSAT during their junior year of high school, or were listed through the National Research Center for College and University Admissions. The Admissions Recruitment Plan is included in the appendix of this report. Application yields by demographics are on the digital dashboard at http://nmc.edu/webprpt/admissions/report_date/200302/sarhanl_spring.htm. Program yields are on the Digital Dashboard at <http://nmc.edu/~webprpt/admissions.htm>.

Academic Enrollment Report

Spring Report Day

ALL LOCATIONS

	Spring 1998	Spring 1999	Spring 2000	Spring 2001	Spring 2002	Spring 2003	% Change
Total Enrolled	3788	3838	3850	3865	4048	4221	4.27%
Credit Hours	33020	33747.6	34755	34980.3	36943.8	38958.6	5.45%
Contact Hours	36672	37327.6	38469	38443.3	40713.8	43171.6	6.04%
Average Load	8.72	8.79	9.03	9.05	9.13	9.23	1.13%
STUDENT:							
Full-Time	1377	1400	1484	1536	1586	1696	6.94%
6-11 Credits	1234	1306	1343	1253	1392	1406	1.01%
1-5 Credits	1177	1132	1023	1076	1070	1119	4.58%
Males	1582	1606	1593	1598	1694	1763	4.07%
Females	2191	2231	2257	2266	2354	2457	4.38%
G.T. Residents	2062	2025	1938	1986	2060	2133	3.54%
Service Area	1119	1212	1268	1216	1322	1383	4.61%
Other Counties	524	527	565	574	560	591	5.54%
Non-Michigan	60	55	55	60	69	77	11.59%
Foreign	23	19	24	21	31	27	-12.90%
VLC - In District				6	2	6	200.00%
VLC - Out of District				2	4	4	0.00%
VLC - Out-Of-State							
Mean Age	27.33	26.96	26.55	26.28	26.5	26.93	1.62%

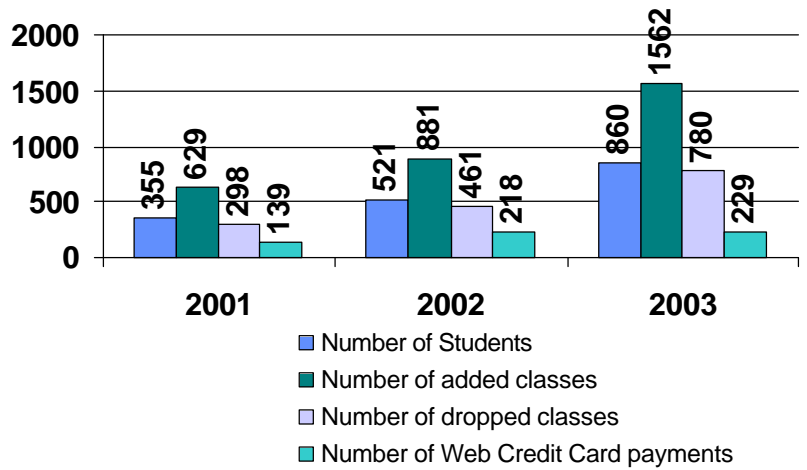
TRAVERSE CITY CAMPUSES

	Spring 1998	Spring 1999	Spring 2000	Spring 2001	Spring 2002	Spring 2003	
*Total Enrolled	3596	3677	3673	3712	3905	4070	4.23%
Credit Hours	31471	32323.6	33225	33419.3	35546.8	37539.6	5.61%
Contact Hours	35051.3	35845.6	36891	36826.3	39267.8	41693.6	6.18%
Average Load	8.75	8.79	9.05	9.00	9.10	9.22	1.32%

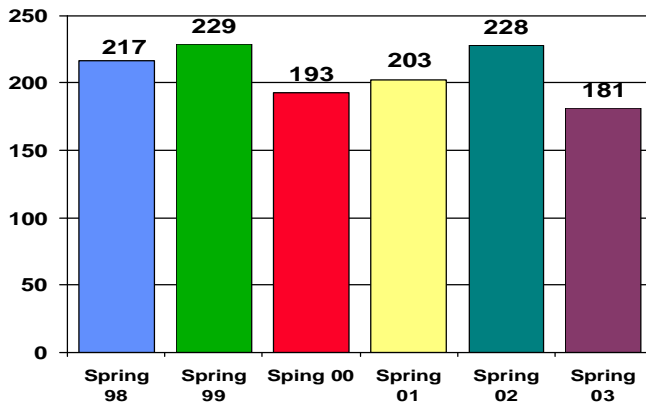
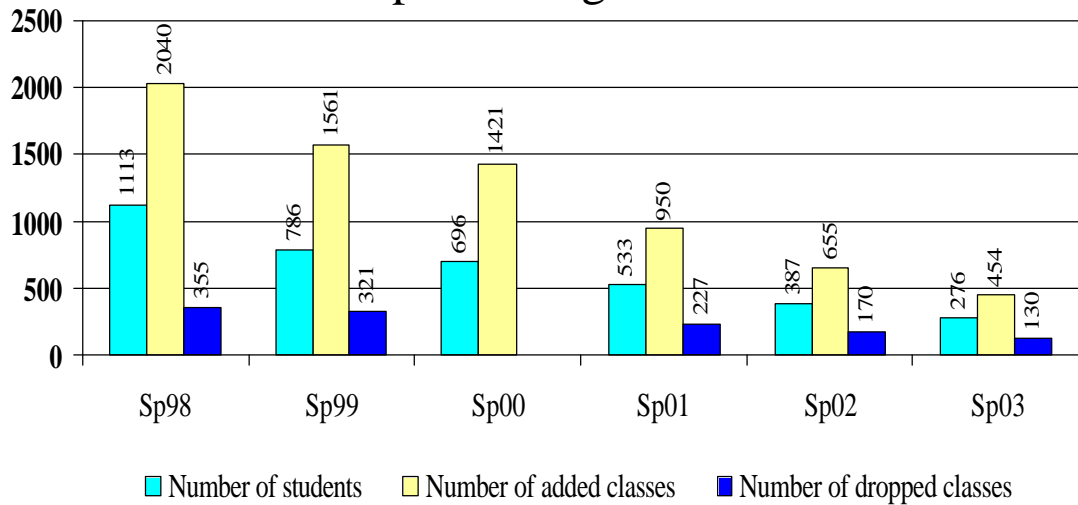
CADILLAC CAMPUS

	Spring 1998	Spring 1999	Spring 2000	Spring 2001	Spring 2002	Spring 2003	
*Total Enrolled	207	204	223	202	184	187	1.63%
Credit Hours	1531	1424	1530	1561	1397	1419	1.57%
Contact Hours	1594	1482	1578	1617	1446	1478	2.21%
Average Load	7.40	6.98	6.86	7.73	7.59	7.59	0.00%

Web Registration



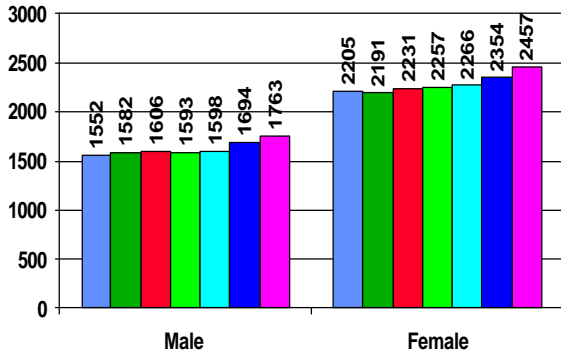
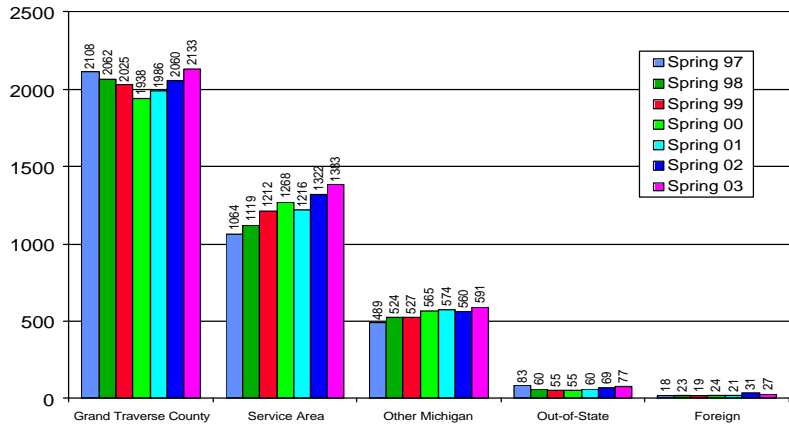
Telephone Registration



Dual Enrollment

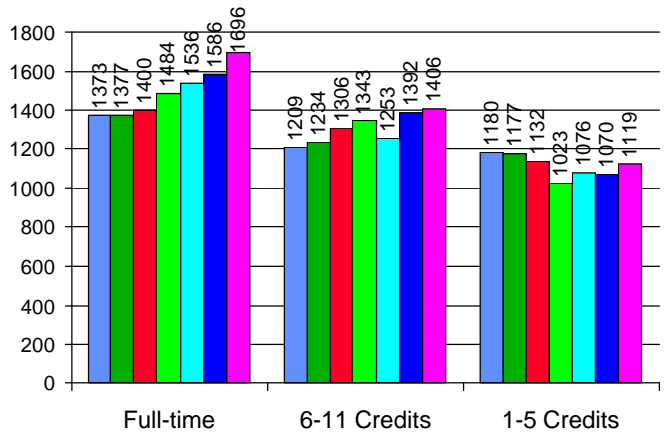
Demographics

By Residency



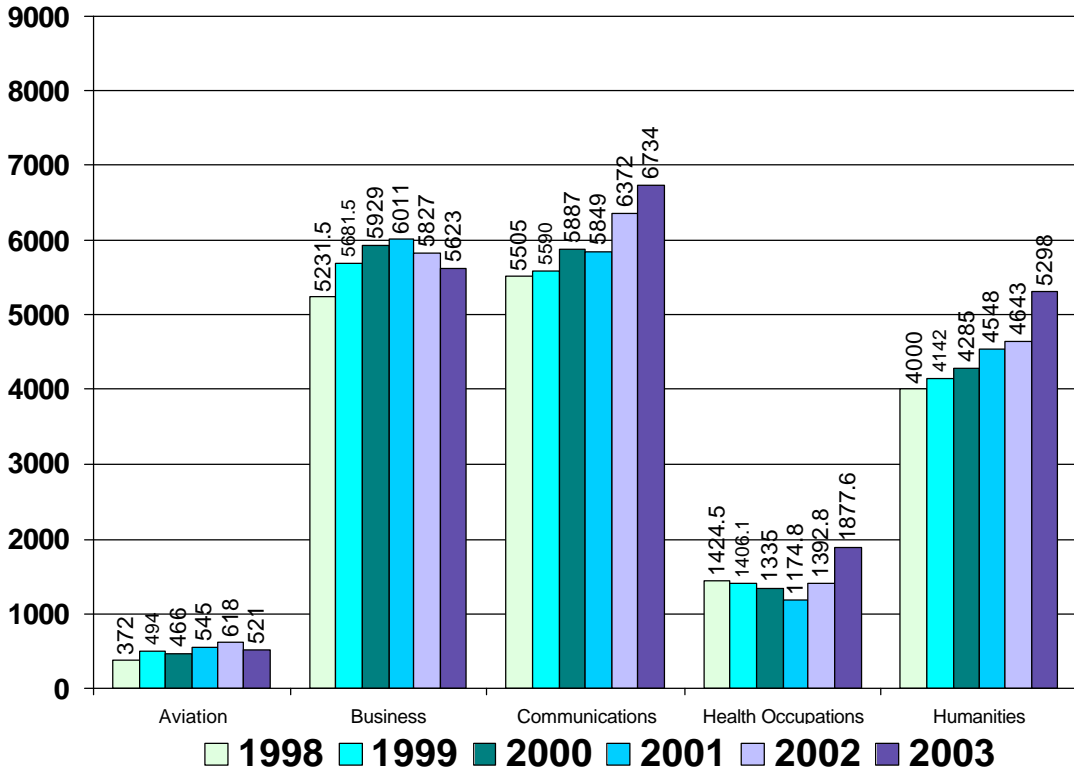
By Gender

By Enrollment Status



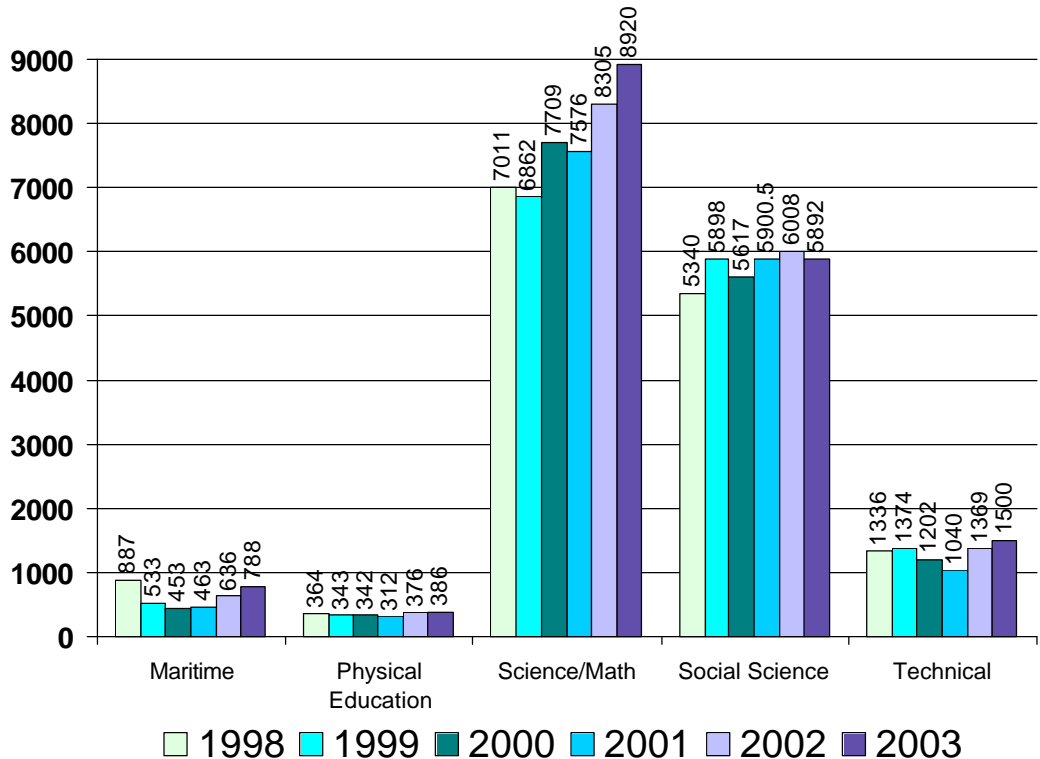
Report Day Credit Hours Generated
Traverse City Campuses

	Spring 98	Spring 99	Spring 00	Spring 01	Spring 02	Spring 03	% Change
AVF	136	205	184	179	209	167	-20.10%
AVG	236	289	282	366	409	354	-13.45%
Aviation	372	494	466	545	618	521	-15.70%
ACC	1068	979	977	1048	1063	1064	0.09%
BFI	16	0	0	0	0	0	0.00%
BPD	37.5	49.5	80	52	15	13	-13.33%
BUS	747	750	792	885	939	1228	30.78%
CIS	1615	1962	1984	2022	1819	1689	-7.15%
CUL						315	100.00%
MGT	216	411	363	375	345	375	8.70%
MKT	189	156	243	249	282	300	6.38%
OIS	884	774	758	735	683	339	-50.37%
PAR	103	140	152	153	180	222	23.33%
RSM	356	460	580	492	501	78	-84.43%
Business	5231.5	5681.5	5929	6011	5827	5623	-3.50%
COM	352	412	428	434	436	404	-7.34%
ENG	4509	4542	4653	4820	5340	5558	4.08%
MLA	90	0	84	0	0	84	100.00%
MLF	40	64	72	80	68	76	11.76%
MLG	32	32	68	48	44	44	0.00%
MLJ	0	0	0	0	0	0	0.00%
MLR	0	0	0	0	0	0	0.00%
MLS	273	284	360	244	304	352	15.79%
THR	209	256	222	223	180	216	20.00%
Comm	5505	5590	5887	5849	6372	6734	5.68%
HAH	113	148	83	72	161	302	87.58%
HDA	295	267	274	249	302	415	37.42%
HMA	134	120	134	73	39	0	-100.00%
HNR	882	864	833	772	883	1151	30.35%
HPD	0.5	7.1	11	8.8	7.8	9.6	23.08%
Health Occ	1424.5	1406.1	1335	1174.8	1392.8	1877.6	34.81%
ART	1256	1291	1267	1363	1382	1557	12.66%
DNC	26	26	22	33	34	30	-11.76%
HST	818	857	855	977	1033	1215	17.62%
HUM	108	126	218	255	200	90	-55.00%
MUS	604	600	575	570	593	665	12.14%
PHL	928	800	898	1029	1002	1057	5.49%
VCA	260	442	450	321	399	684	71.43%
Hum	4000	4142	4285	4548	4643	5298	14.11%



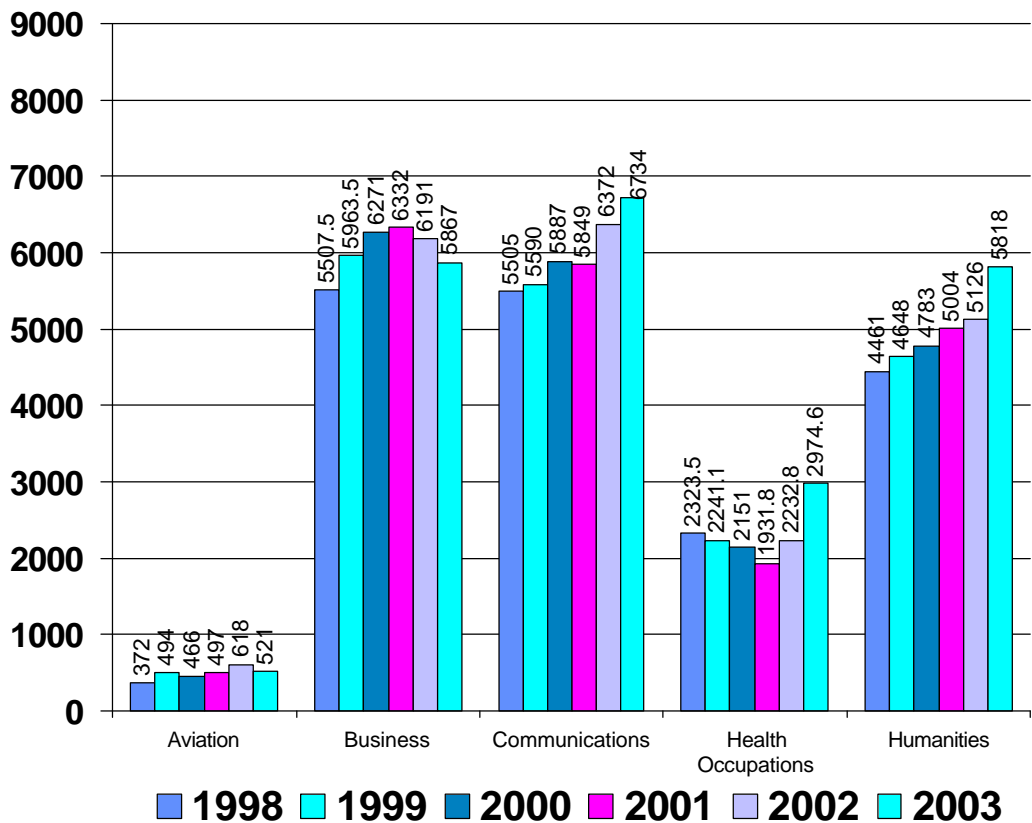
**Report Day Credit Hours Generated
Traverse City Campuses**

	Spring 98	Spring 99	Spring 00	Spring 01	Spring 02	Spring 03	% Change
MDK	584	320	308	346	415	440	6.02%
MNG	251	205	141	97	175	302	72.57%
MNS	52	8	4	20	46	46	0.00%
Maritime	887	533	453	463	636	788	23.90%
HF	178	163	167	174	173	167	-3.47%
OUT	73	72	61	52	64	74	15.63%
PE	113	108	114	86	139	145	4.32%
Phys Ed	364	343	342	312	376	386	2.66%
AST	76	108	92	116	124	120	-3.23%
BIO	1470	1489	1503	1651	1679	2019	20.25%
CHM	709	530	701	508	556	770	38.49%
EGR	164	135	201	177	184	151	-17.93%
ENV	386	400	448	416	458	592	29.26%
MTH	2923	3951	4398	4376	4959	4917	-0.85%
PHY	283	249	366	332	345	351	1.74%
Sci/Math	7011	6862	7709	7576	8305	8920	7.41%
CD	441	401	482	434	489	436	-10.84%
CJ	139	184	149	222	196	272	38.78%
COR	99	339	126	243	0	0	0.00%
ECO	600	621	585	597	741	813	9.72%
EDU	84	84	65	78	103	96	-6.80%
GEO	181	216	82	88	116	240	106.90%
LWE	309	390	307	430	444	377	-15.09%
PLS	1089	1110	1134	1149	885	690	-22.03%
PSY	1576	1652	1802	1697	1969	1947	-1.12%
SDC	59	69	49	52.5	0	0	0.00%
SOC	651	747	773	813	972	963	-0.93%
SWK	112	85	63	97	93	58	-37.63%
Soc Sci	5340	5898	5617	5900.5	6008	5892	-1.93%
AUT	381	332	337	296	349	442	26.65%
EET	170	210	176	125	142	96	-32.39%
ITA						50	100.00%
ITD					41	2	100.00%
ITH					92	239	100.00%
ITPD					15	9	100.00%
MFG	718	732	587	511	579	490	-15.37%
TPD	0	4	4	0	0	0	0.00%
WPT	67	96	98	108	151	172	13.91%
Technical	1336	1374	1202	1040	1369	1500	9.57%
Campus Total	31471	32323.6	33225	33419.3	35546.8	37539.6	5.61%



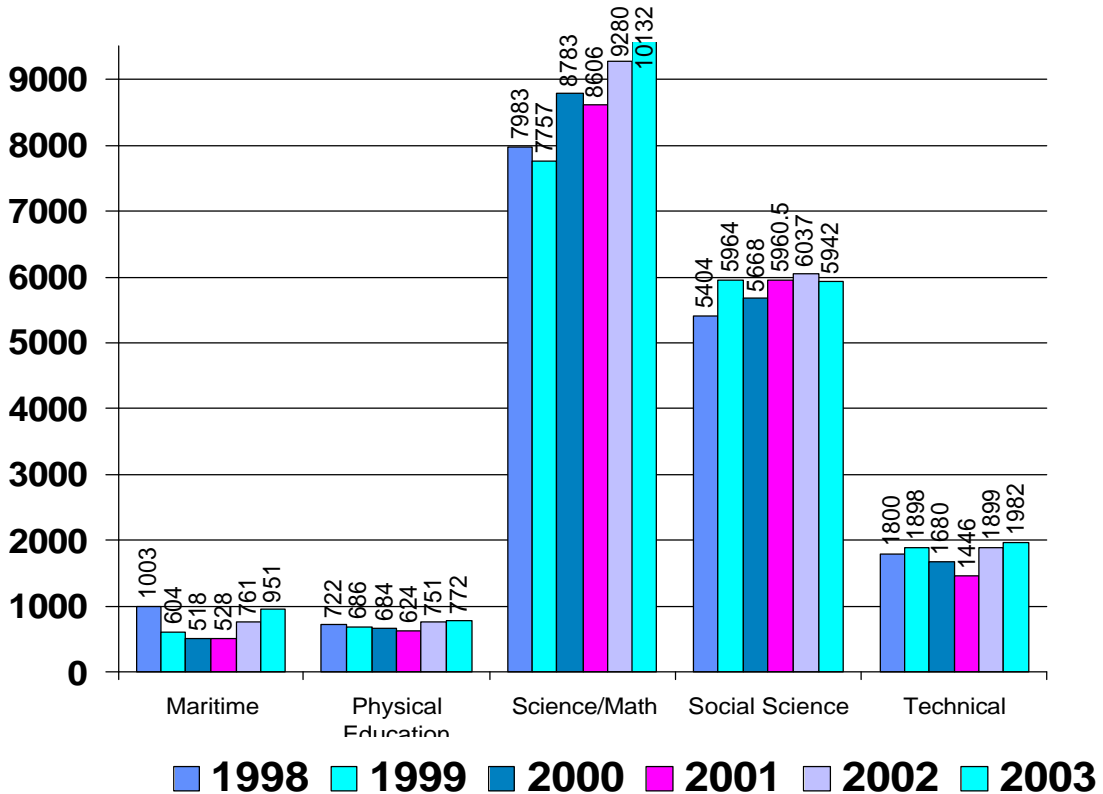
Report Day Contact Hours Generated
Traverse City Campuses

	Spring 98	Spring 99	Spring 00	Spring 01	Spring 02	Spring 03	% Change
AVF	136	205	184	179	209	167	-20.10%
AVG	236	289	282	318	409	354	-13.45%
Aviation	372	494	466	497	618	521	-15.70%
ACC	1068	979	977	1048	1063	1064	0.09%
BFI	16	0	0	0	0	0	0.00%
BPD	37.5	49.5	80	52	15	13	-13.33%
BUS	747	750	792	885	939	1228	30.78%
CIS	1615	1962	1984	2022	1819	1689	-7.15%
CUL						491	100.00%
MGT	216	411	363	375	345	375	8.70%
MKT	189	156	243	249	282	300	6.38%
OIS	972	830	822	844	763	407	-46.66%
PAR	103	140	152	153	180	222	23.33%
RSM	544	686	858	704	785	78	-90.06%
Business	5507.5	5963.5	6271	6332	6191	5867	-5.23%
COM	352	412	428	434	436	404	-7.34%
ENG	4509	4542	4653	4820	5340	5558	4.08%
MLA	90	0	84	0	0	84	100.00%
MLF	40	64	72	80	68	76	11.76%
MLG	32	32	68	48	44	44	0.00%
MLJ	0	0	0	0	0	0	0.00%
MLR	0	0	0	0	0	0	0.00%
MLS	273	284	360	244	304	352	15.79%
THR	209	256	222	223	180	216	20.00%
Comm	5505	5590	5887	5849	6372	6734	5.68%
HAH	113	150	86	83	177	313	76.84%
HDA	334	310	321	285	344	481	39.83%
HMA	134	120	134	73	39	0	-100.00%
HNR	1742	1654	1599	1482	1665	2171	30.39%
HPD	0.5	7.1	11	8.8	7.8	9.6	23.08%
Health Occ	2323.5	2241.1	2151	1931.8	2232.8	2974.6	33.22%
ART	1497	1555	1527	1615	1633	1845	12.98%
DNC	52	52	44	63	66	60	-9.09%
HST	818	857	855	977	1033	1215	17.62%
HUM	108	126	218	255	200	90	-55.00%
MUS	684	669	641	638	663	751	13.27%
PHL	928	800	898	1029	1002	1057	5.49%
VCA	344	589	600	427	529	800	51.23%
Hum	4431	4648	4783	5004	5126	5818	13.50%



Report Day Contact Hours Generated
Traverse City Campuses

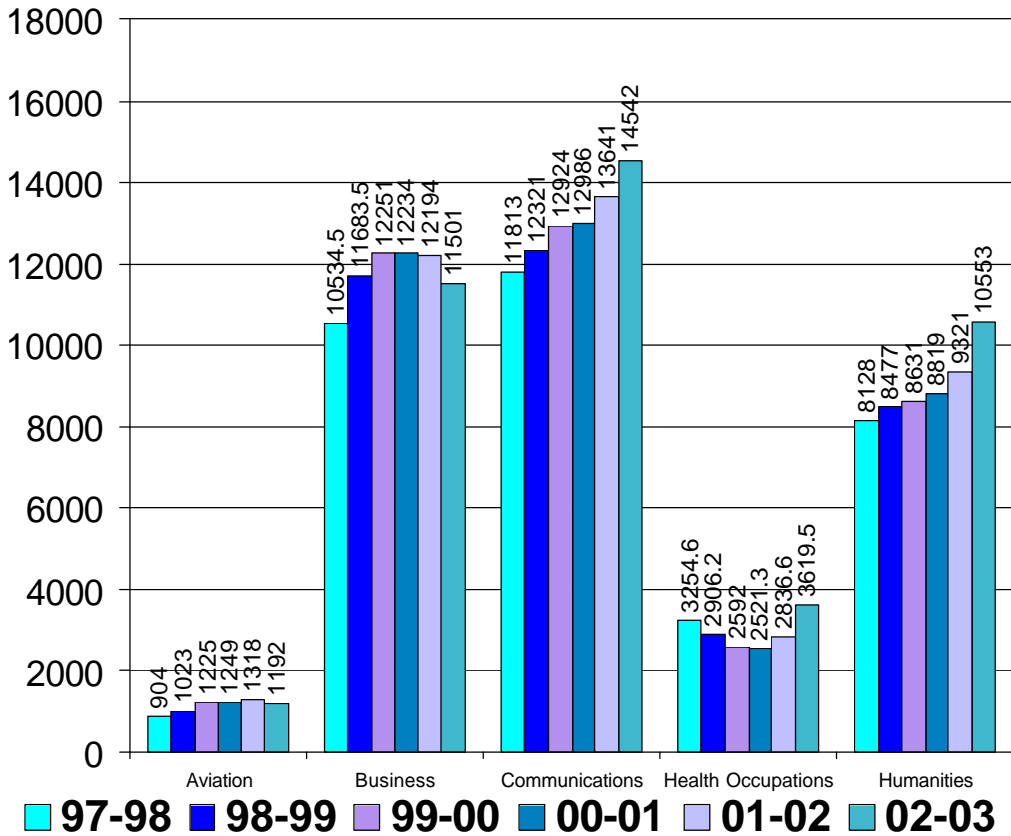
	Spring 98	Spring 99	Spring 00	Spring 01	Spring 02	Spring 03	% Change
MDK	663	353	340	393	477	503	5.45%
MNG	288	243	174	115	238	402	68.91%
MNS	52	8	4	20	46	46	0.00%
Maritime	1003	604	518	528	761	951	24.97%
HF	350	326	334	348	346	334	-3.47%
OUT	146	144	122	104	128	148	15.63%
PE	226	216	228	172	277	290	4.69%
Phys Ed	722	686	684	624	751	772	2.80%
AST	95	135	115	145	155	150	-3.23%
BIO	1873	1892	1920	2118	2160	2605	20.60%
CHM	978	733	974	705	757	1071	41.48%
EGR	177	150	218	196	207	173	-16.43%
ENV	479	500	560	523	573	742	29.49%
MTH	4005	4017	4508	4467	4959	4917	-0.85%
PHY	376	330	488	452	469	474	1.07%
Sci/Math	7983	7757	8783	8606	9280	10132	9.18%
CD	441	401	482	434	489	436	-10.84%
CJ	139	184	149	222	196	272	38.78%
COR	99	339	126	243	0	0	0.00%
ECO	600	621	585	597	741	813	9.72%
EDU	126	126	97	116	103	96	-6.80%
GEO	203	240	101	110	145	270	86.21%
LWE	309	390	307	430	444	397	-10.59%
PLS	1089	1110	1134	1149	885	690	-22.03%
PSY	1576	1652	1802	1697	1969	1947	-1.12%
SDC	59	69	49	52.5	0	0	0.00%
SOC	651	747	773	813	972	963	-0.93%
SWK	112	85	63	97	93	58	-37.63%
Soc Science	5404	5964	5668	5960.5	6037	5942	-1.57%
AUT	465	428	435	370	437	544	24.49%
EET	255	305	264	182	213	144	-32.39%
ITA						50	100.00%
ITD					41	2	100.00%
ITH					125	272	100.00%
ITPD					15	9	100.00%
MFG	977	1010	824	726	835	696	-16.65%
TPD	0	8	8	0	0	0	0.00%
WPT	103	147	149	168	233	265	13.73%
Technical	1800	1898	1680	1446	1899	1982	4.37%
Campus Total	35051	35845.6	36891	36778.3	39267.8	41693.6	6.18%



YEAR CREDIT HOURS GENERATED

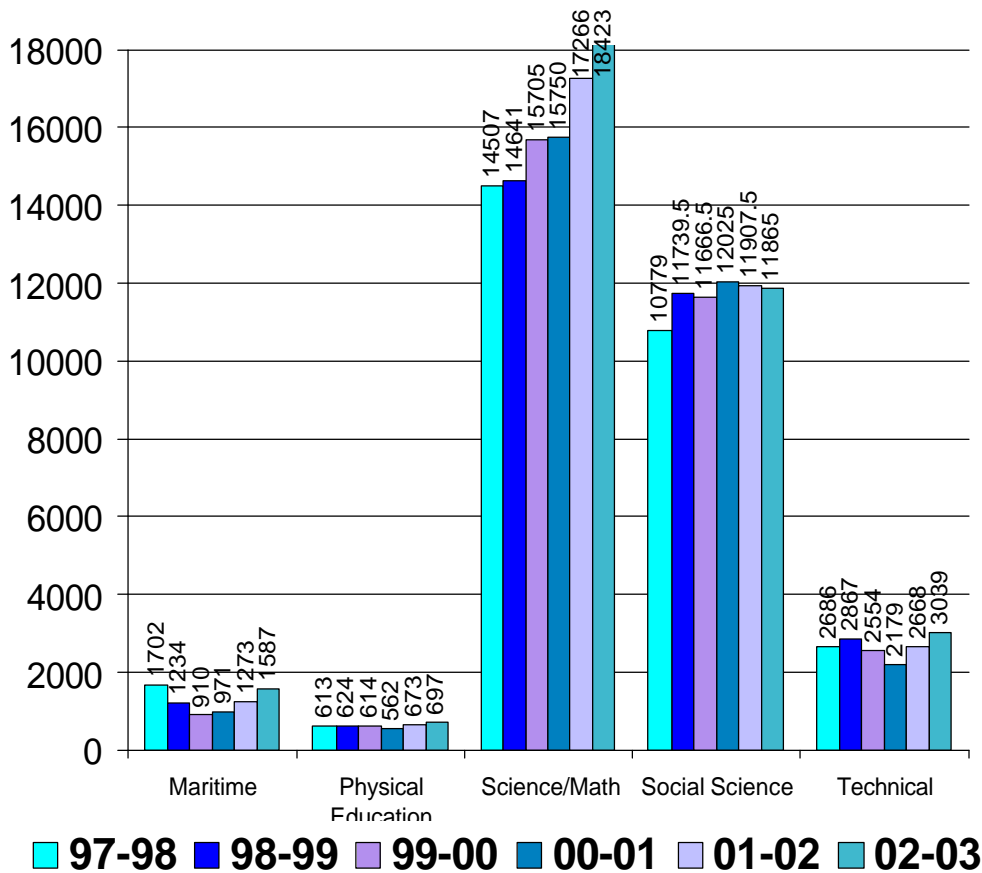
School Year (Fall and Spring)

	97-98	98-99	99-00	00-01	01-02	02-03	% Change
AVF	347	439	483	456	511	452	-11.55%
AVG	557	584	742	793	807	740	-8.30%
Aviation	904	1023	1225	1249	1318	1192	-9.56%
ACC	2227	2191	2138	2280	2263	2206	-2.52%
BFI	30	0	45	64	19	0	-100.00%
BPD	37.5	80.5	80	52	15	21	40.00%
BUS	1659	1674	1767	1782	1896	2430	28.16%
CIS	2962	3642	3833	3884	3850	3550	-7.79%
CUL						732	100.00%
MGT	444	651	662	696	651	678	4.15%
MKT	375	327	483	513	525	549	4.57%
OIS	1711	1747	1672	1541	1528	744	-51.31%
PAR	327	365	340	368	381	420	10.24%
RSM	762	1006	1231	1054	1066	171	-83.96%
Business	10534.5	11683.5	12251	12234	12194	11501	-5.68%
COM	760	832	860	884	888	904	1.80%
ENG	9396	9895	10333	10699	11397	11966	4.99%
MLA	359	96	233	0	0	84	0.00%
MLF	140	156	140	216	220	204	-7.27%
MLG	139	112	136	188	148	164	10.81%
MLJ	0	0	0	0	0	0	0.00%
MLR	0	0	0	0	0	0	0.00%
MLS	683	724	808	580	808	928	14.85%
THR	336	506	414	419	180	292	62.22%
Comm	11813	12321	12924	12986	13641	14542	6.61%
HAH	285	327	269	266	303	667	120.13%
HDA	559	527	517	417	487	659	35.32%
HMA	224	195	240	102	143	0	-100.00%
HNR	2186	1838	1846	1706	1889	2269	20.12%
HPD	0.6	19.2	20	30.3	14.6	24.5	67.81%
Health Occ	3254.6	2906.2	2892	2521.3	2836.6	3619.5	27.60%
ART	2529	2764	2669	2808	2924	3237	10.70%
DNC	64	48	52	77	76	60	-21.05%
HST	1718	1778	1849	1875	2001	2445	22.19%
HUM	213	246	448	462	423	180	-57.45%
MUS	1254	1260	1101	1144	1176	1344	14.29%
PHL	1710	1642	1777	1895	2010	2109	4.93%
VCA	640	739	735	558	711	1178	65.68%
Hum	8128	8477	8631	8819	9321	10553	13.22%



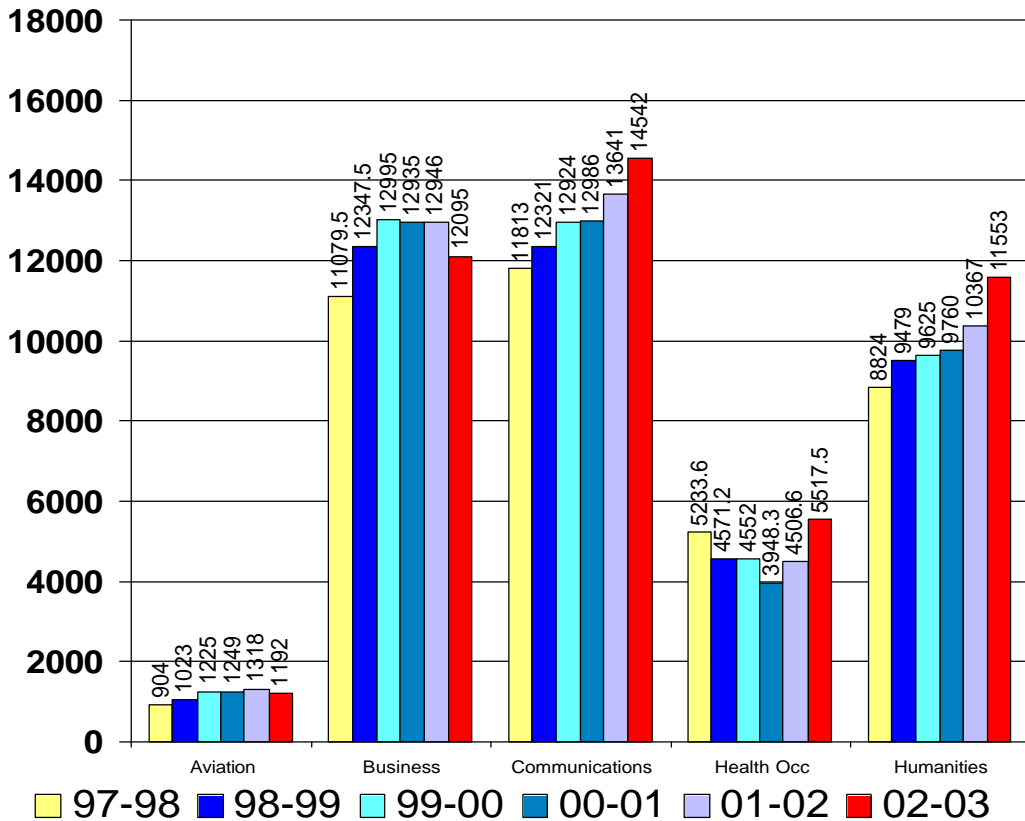
YEAR CREDIT HOURS GENERATED
(Fall and Spring)

	97-98	98-99	99-00	00-01	01-02	02-03	% Change
MDK	1153	765	616	610	760	838	10.26%
MNG	493	418	262	297	425	661	55.53%
MNS	56	54	32	64	88	88	0.00%
Maritime	1702	1237	910	971	1273	1587	24.67%
HF	300	307	282	294	294	311	5.78%
OUT	128	132	134	105	129	142	10.08%
PE	185	185	198	163	250	244	-2.40%
Phys Ed	613	624	614	562	673	697	3.57%
AST	196	232	224	244	244	256	4.92%
BIO	2980	3169	3159	3245	3463	3937	13.69%
CHM	1491	1250	1375	1156	1240	1561	25.89%
EGR	354	334	413	398	401	328	-18.20%
ENV	602	744	808	760	902	1084	20.18%
MTH	7246	8369	9034	9244	10329	10542	2.06%
PHY	638	543	692	703	687	715	4.08%
Sci/Math	14507	14641	15705	15750	17266	18423	6.70%
CD	826	799	797	762	793	742	-6.43%
CJ	99	404	341	491	468	596	27.35%
COR	408	510	282	243	0	0	0.00%
ECO	1152	1176	1197	1185	1353	1530	13.08%
EDU	188	156	139	156	151	189	25.17%
GEO	310	429	424	403	539	831	54.17%
LWE	566	669	633	732	829	713	-13.99%
PLS	2187	2307	2367	2415	1752	1401	-20.03%
PSY	3115	3354	3478	3531	3892	3986	2.42%
SDC	351	398.5	368.5	362	270.5	0	-100.00%
SOC	1312	1290	1427	1452	1584	1659	4.73%
SWK	265	247	213	293	276	218	-21.01%
Soc Sci	10779	11739.5	11666.5	12025	11907.5	11865	-0.36%
AUT	661	743	748	505	689	899	30.48%
EET	352	414	367	288	361	174	-51.80%
ITA						82	100.00%
ITD					41	28	-31.71%
ITH					92	488	430.43%
ITPD					15	12	-20.00%
MFG	1508	1538	1243	1194	1203	1095	-8.98%
TPD	0	4	7	0	0	0	0.00%
WPT	165	168	189	192	267	261	-2.25%
Technical	2686	2867	2554	2179	2668	3039	13.91%
Campus Total	64921.1	67519.2	69372.5	69296.3	73098.1	77018.5	5.36%



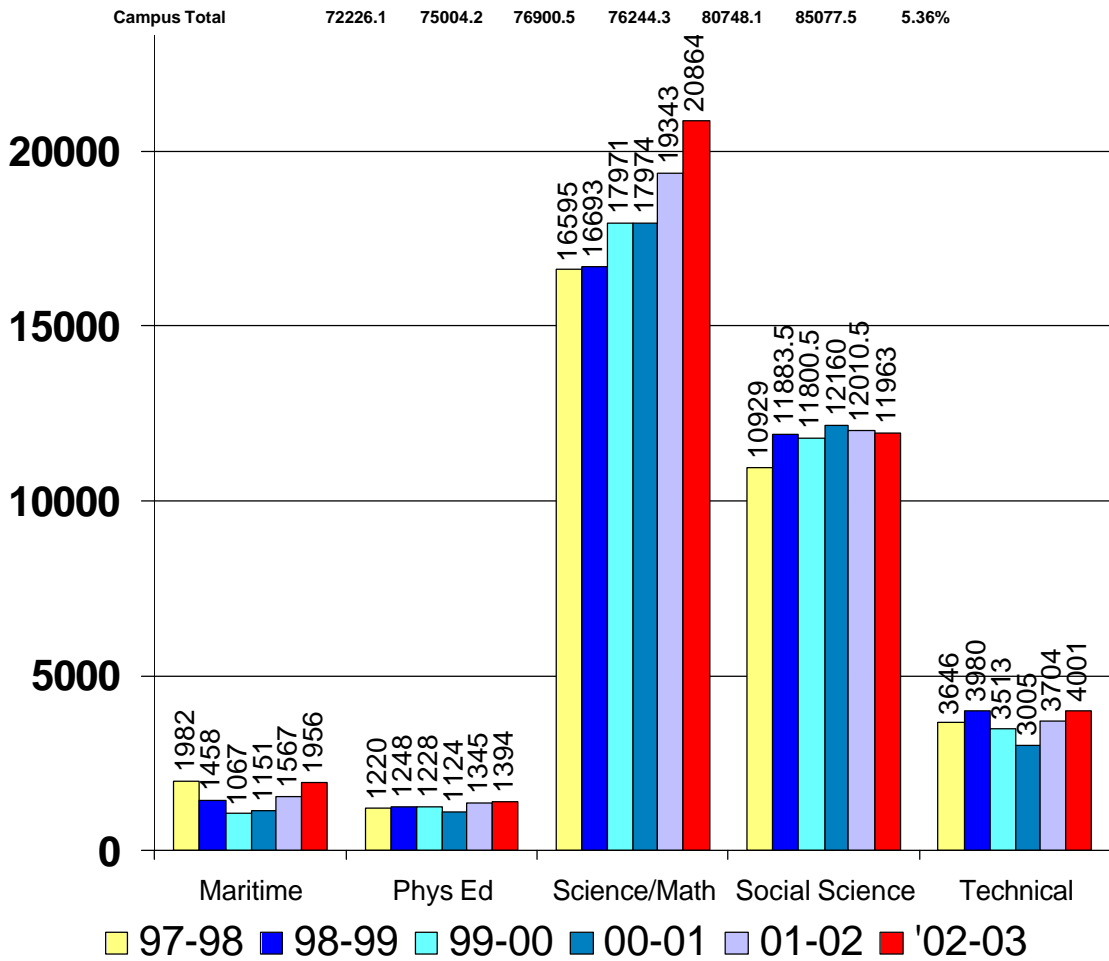
Traverse City Campuses Contact Hours

	School Year (Fall & Spring)						
	97-98	98-99	99-00	00-01	01-02	02-03	% Change
AVF	347	439	483	456	511	452	-11.55%
AVG	557	584	742	745	807	740	-8.30%
Aviation	904	1023	1225	1201	1318	1192	-9.56%
ACC	2227	2191	2138	2280	2263	2206	-2.52%
BFI	30	0	0	0	0	8	0.00%
BDP	37.5	80.5	125	116	34	13	-61.76%
BUS	1659	1674	1767	1782	1896	2430	28.16%
CIS	2962	3642	3833	3884	3850	3550	-7.79%
CUL						1162	100.00%
MGT	444	651	662	696	651	678	4.15%
MKT	375	327	483	513	525	549	4.57%
OIS	1895	1909	1852	1750	1724	908	-47.33%
PAR	327	365	340	368	381	420	10.24%
RSM	1123	1508	1795	1546	1622	171	-89.46%
Business	11079.5	12347.5	12995	12935	12946	12095	-6.57%
COM	760	832	860	884	888	904	1.80%
ENG	9396	9895	10333	10699	11397	11966	4.99%
MLA	359	96	233	0	0	84	0.00%
MLF	140	156	140	216	220	204	-7.27%
MLG	139	112	136	188	148	164	10.81%
MLJ	0	0	0	0	0	0	0.00%
MLR	0	0	0	0	0	0	0.00%
MLS	683	724	808	580	808	928	14.85%
THR	336	506	414	419	180	292	62.22%
Comm	11813	12321	12924	12986	13641	14542	6.61%
HAH	303	351	291	297	335	704	110.15%
HDA	624	590	589	469	543	742	36.65%
HMA	242	215	268	106	171	0	-100.00%
HNR	4064	3396	3384	3046	3443	4047	17.54%
HPD	0.6	19.2	20	30.3	14.6	24.5	67.81%
Total	5233.6	4571.2	4552	3948.3	4506.6	5517.5	22.43%
ART	3027	3323	3222	3351	3501	3842	9.74%
DNC	128	96	104	151	150	120	-20.00%
HST	1718	1778	1849	1875	2001	2445	22.19%
HUM	213	246	448	462	423	180	-57.45%
MUS	1422	1409	1245	1283	1337	1529	14.36%
PHL	1710	1642	1777	1895	2010	2109	4.93%
VCA	606	985	980	743	945	1328	40.53%
Hum	8824	9479	9625	9760	10367	11553	11.44%



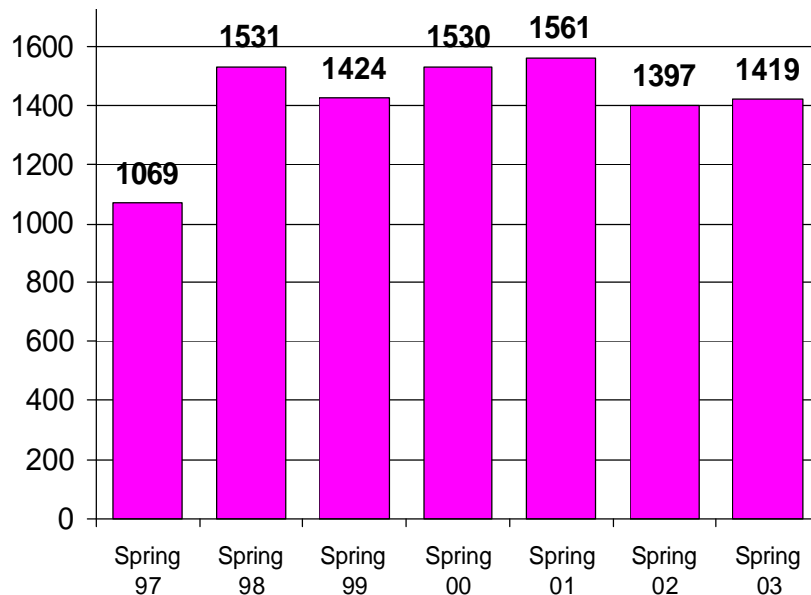
Traverse City Campuses Contact Hours

	School Year (Fall & Spring)						
	97-98	98-99	99-00	00-01	01-02	02-03	% Change
MDK	1336	883	709	723	909	999	9.90%
MNG	590	521	326	364	570	869	52.46%
MNS	56	54	32	64	88	88	0.00%
Maritime	1982	1458	1067	1151	1567	1956	24.82%
HF	594	614	564	588	588	622	5.78%
OUT	256	264	268	210	258	284	10.08%
PE	370	370	396	326	499	488	-2.20%
Phys Ed	1220	1248	1228	1124	1345	1394	3.64%
AST	245	290	280	305	305	320	4.92%
BIO	3864	4095	4058	4183	4480	5117	14.22%
CHM	2066	1736	1920	1616	1703	2171	27.48%
EGR	392	369	452	441	445	371	-16.63%
ENV	749	930	1010	953	1128	1357	20.30%
MTH	8417	8533	9309	9502	10329	10542	2.06%
PHY	862	740	942	974	953	986	3.46%
Sci/Math	16595	16693	17971	17974	19343	20864	7.86%
CD	826	799	797	762	793	742	-6.43%
COR	99	510	341	491	468	596	27.35%
CJ	408	404	282	243	0	0	0.00%
ECO	1152	1176	1197	1185	1353	1530	13.08%
EDU	282	234	208	231	175	189	8.00%
GEO	332	453	443	425	568	891	56.87%
LWE	600	711	679	770	879	751	-14.56%
PLS	2187	2307	2367	2415	1752	1401	-20.03%
PSY	3115	3354	3478	3531	3892	3986	2.42%
SDC	351	398.5	368.5	362	270.5	0	-100.00%
SOC	1312	1290	1427	1452	1584	1659	4.73%
SWK	265	247	213	293	276	218	-21.01%
Soc Scienc	10929	11883.5	11800.5	12160	12010.5	11963	-0.40%
AUT	805	925	934	611	851	1099	29.14%
EET	507	611	545	420	530	261	-50.75%
ITA						82	100.00%
ITD					41	28	-31.71%
ITH					125	563	350.40%
ITDP					15	12	-20.00%
MFG	2083	2179	1732	1675	1728	1550	-10.30%
TDP	0	8	14	0	0	0	0.00%
WPT	251	257	288	299	414	406	-1.93%
Technical	3646	3980	3513	3005	3704	4001	8.02%
Campus Total	72226.1	75004.2	76900.5	76244.3	80748.1	85077.5	5.36%



Report Day Enrollments Cadillac Campus Credit Hours Generated

	Spring 97	Spring 98	Spring 99	Spring 00	Spring 01	Spring 02	Spring 03	% Change
ACC	0	0	0	0	0	24	0	100.00%
BUS	0	24	33	27	48	21	0	-100.00%
CIS	76	78	54	51	87	62	54	-12.90%
MGT	0	0	0	0	0	0	0	0.00%
MKT	0	0	0	0	0	0	0	0.00%
OIS	0	0	0	0	0	0	0	0.00%
PAR		0	0	0	0	0	0	0.00%
Business	76	102	87	78	135	107	54	-49.53%
COM	60	36	60	60	48	80	68	-15.00%
ENG	296	329	267	231	309	336	311	-7.44%
MLS	0	0	0	0	0	0	36	0.00%
Comm	356	365	327	291	357	416	415	-0.24%
HAH	12	4	12	9	0	9	0	100.00%
HNR	0	35	0	24	10	14	0	-100.00%
Health Occ	12	39	12	33	10	23	0	-100.00%
ART	0	0	0	0	0	0	0	0.00%
HST	76	165	167	231	191	132	176	33.33%
MUS	0	15	0	0	12	0	0	0.00%
PHL	39	60	69	102	60	36	66	83.33%
Hum	115	240	236	333	263	168	242	44.05%
HF	8	22	13	9	20	11	5	-54.55%
PE	2	0	0	0	0	0	5	0.00%
Phys Ed	10	22	13	9	20	11	10	-9.09%
BIO	72	96	76	84	76	88	96	9.09%
CHM	44	68	56	44	68	64	100	56.25%
ENV	0	0	48	0	0	0	0	0.00%
MTH	236	188	223	289	223	184	192	4.35%
Sci/Math	352	352	403	417	367	336	388	15.48%
CD	0	0	40	0	0	0	0	0.00%
CJ					52	24	4	-83.33%
COR	0	0	0	0	0	0	0	0.00%
ECO	0	0	0	0	63	42	45	7.14%
EDU	22	0	0	0	0	0	0	0.00%
GEO	0	39	45	0	36	42	42	100.00%
PAR		moved to the Business Discipline						
PLS	30	72	33	72	63	63	39	-38.10%
PSY	81	198	153	249	120	114	129	13.16%
SOC	15	102	75	48	75	51	51	0.00%
SWK	0	0	0	0	0	0	0	0.00%
Soc Sci	148	411	346	369	409	336	310	-7.74%
Cadillac Campus Total	1069	1531	1424	1530	1561	1397	1419	1.57%



Report Day Enrollments Cadillac Campus Contact Hours Generated

	Spring 97	Spring 98	Spring 99	Spring 00	Spring 01	Spring 02	Spring 03	% Change
ACC	0	0	0	0	0	24	0	-100.00%
BUS	0	24	33	27	48	21	0	-100.00%
CIS	76	78	54	51	87	62	54	-12.90%
MGT	0	0	0	0	0	0	0	0.00%
MKT	0	0	0	0	0	0	0	0.00%
OIS	0	0	0	0	0	0	0	0.00%
PAR		0	0	0	0	0	0	0.00%
Business	76	102	87	78	135	107	54	-49.53%
COM	60	36	60	60	48	80	68	-15.00%
ENG	296	329	267	231	309	336	311	-7.44%
MLS	0	0	0	0	0	0	36	0.00%
Comm	356	365	327	291	357	416	415	-0.24%
HAH	12	4	12	9	0	9	0	100.00%
HNR	0	35	0	24	10	14	0	-100.00%
Health Occ	12	39	12	33	10	23	0	-100.00%
ART	0	0	0	0	0	0	0	0.00%
HST	76	165	167	231	191	132	176	33.33%
MUS	0	15	0	0	12	0	0	100.00%
PHL	39	60	69	102	60	36	66	83.33%
Hum	115	240	236	333	263	168	242	44.05%
HF	16	44	26	18	40	22	10	-54.55%
PE	4	0	0	0	0	0	10	0.00%
Phys Ed	20	44	26	18	40	22	20	-9.09%
BIO	90	120	95	105	95	110	120	9.09%
CHM	55	85	70	55	85	80	125	56.25%
ENV	246	188	60	0	0	0	0	0.00%
MTH	0	0	223	296	223	184	192	4.35%
Sci/Math	391	393	448	456	403	374	437	16.84%
CD	0	0	40	0	0	0	0	0.00%
CJ					52	24	4	-83.33%
COR	0	0	0	0	0	0	0	0.00%
ECCO	0	0	0	0	63	42	45	7.14%
EDU	33	0	0	0	0	0	0	0.00%
GEO	0	39	45	0	36	42	42	-100.00%
PAR	0 moved to Business							
PLS	30	72	33	72	63	63	39	-38.10%
PSY	81	198	153	249	120	114	129	13.16%
SOC	15	102	75	48	75	51	51	0.00%
SWK	0	0	0	0	0	0	0	0.00%
Soc Sci	159	411	346	369	409	336	310	-7.74%
	1129	1594	1482	1578	1617	1446	1478	2.21%

