



# Enrollment Report

## Summer Semester 2001

Report Day - June 11, 2001

Carol Taberski, Registrar, Interim Director of Admissions  
Nancy McArthur, Records Technician

Summer Semester 2001  
Report Day – June 11, 2001

Table of Contents

Summary .....	1
Office of Admissions - Final report .....	2
Academic Enrollment Report .....	3
Headcount chart.....	4
Credit Hours Generated chart.....	4
Contact Hours Generated chart .....	4
TouchTone Registration .....	5
Web Registration.....	5
Summer Enrollment by Residency chart .....	6
Summer Enrollment by Gender chart .....	6
Summer Enrollment by Enrollment Status chart .....	6
Traverse City Campuses	
Summer Credit Hrs Generated .....	7
Summer Credit Hours Generated chart.....	8
Traverse City Campuses	
Summer Contact Hrs Generated.....	9
Summer Contact Hours Generated chart .....	10
Cadillac Campus Credit & Contact Hours Generated .....	11
Cadillac Campus Credit and Contact Hours chart.....	11

Summer Semester 2001  
Enrollment Report  
Summary

Summer enrollment at Northwestern Michigan College has increased slightly from summer 2000 enrollment, as have enrollments throughout the year. Head count increased by half a percent going from 1200 in 2000 to 1207 for 2001. Since 1996 enrollment has been consistently increasing. The headcount in 1996 was 992. In 1997 there was an increase of 2.52 percent to 1017, 1998 increased 5.60 percent to 1074, 1999 increased 8.19 percent to 1162, and 2000 increased 3.27 percent to 1200. See page three for figures.

Credit hours and contact hours increased by over four percent with credit hours going from 5613 to 5868 while contact hours increased from 5897 to 6154. Credit hours and contact hours have also increased since 1996. Credit hours in 1996 were 4585.5, 1997 increased 4.40 percent to 4788, 1998 increased 7.81 percent to 5162, 1999 increased 8.80 percent to 5580, and 2000 increased 0.59 percent to 5612. Contact hours were 4968 in 1996, increased 5.81 percent in 1997 to 5105.5, increased 6.70 percent in 1998 to 5447.5, increased 8.26 percent in 1999 to 5891.5, and increased 0.10 percent in 2000 to 5897.5. See chart on page four.

From the Admissions office, the number of students who applied during summer increased by 18 percent. This included increases in first time in any college, transfer, and guest students. The number of students from this number who registered also increased by over 18 percent. The yield of new applications to enrolled students is 56 percent, consistent with last year. See page 2.

The largest percentage increase for the summer semester was in Cadillac. See page 3. More classes were offered in Cadillac. The class with the highest enrollment was a telecourse. The discipline on main campus with the highest increases in credit hours is Humanities. Additional offerings of on-line and telecourse classes within the discipline showed high enrollment. This could be a result of the format the class was offered, the reputation of the instructors, the easy transferability of the classes, or the flexible format of the class students may prefer for summer. Some other large increases were shown in the Health Occupations and Math/Science disciplines. These disciplines offered the same number and type of classes as the previous year. See page 7.

The largest decreases in credit hours were in the Aviation, Business, and Social Science disciplines. See page 7. These disciplines had very similar offerings as the previous year. Although the number of classes NMC offered through the MCCVLC increased from last year, the number of students enrolled through the VLC decreased to only two.

The average credit load for students during summer remains steady at just over four-and-a-half credits. Summer semester at NMC, for the majority of classes, is eight weeks long, half the duration of classes during fall and spring semesters. The mean age of students for summer is 27.23, a slight drop from the summer before.

Office of Admissions - Final Report  
Summer Semester 2001

	<b>2000</b>	<b>2001</b>	<b>% Change</b>
<b>APPLICATIONS RECEIVED</b>	<b>528</b>	<b>626</b>	+ <b>18.6</b>
<b>APPLICATION TYPE:</b>			
<i>First Time in any College (FTIAC)</i>	<b>157</b>	<b>183</b>	+ <b>16.6</b>
<i>Dual Enrollment</i>	<b>19</b>	<b>14</b>	- <b>26.3</b>
<i>Co-Enrolled</i>	<b>0</b>	<b>0</b>	-
<i>Special Enrollment Option</i>	<b>0</b>	<b>0</b>	<b>0</b>
<i>Former Dual Enrollment (New)</i>	<b>13</b>	<b>15</b>	+ <b>15.4</b>
<i>Transfer</i>	<b>131</b>	<b>162</b>	+ <b>26.7</b>
<i>Guest</i>	<b>198</b>	<b>223</b>	+ <b>12.6</b>
<b>ADMISSION STATUS</b>			
<i>Regular Admission</i>	<b>511</b>	<b>590</b>	+ <b>15.5</b>
<i>Limited Admission</i>	<b>4</b>	<b>9</b>	+ <b>125.0</b>
<i>Pending Admission</i>	<b>9</b>	<b>26</b>	+ <b>189.0</b>
<i>Denied Admission</i>	<b>0</b>	<b>0</b>	-
<i>Cancelled Admission (student initiated)</i>	<b>4</b>	<b>1</b>	- <b>75.0</b>
<b>NUMBER REGISTERED</b>	<b>300</b>	<b>356</b>	+ <b>18.7</b>
<b>COMMENTS:</b>			
<i>% Applicants admitted</i>	<b>97.5</b>	<b>95.7</b>	- <b>1.8</b>
<i>% Applicants FTIAC</i>	<b>29.7</b>	<b>29.2</b>	+ <b>.5</b>
<i>% Applicants transferred to NMC</i>	<b>24.8</b>	<b>25.9</b>	+ <b>1.1</b>
<i>YIELD - Total Apps to Enrolled</i>	<b>56.8</b>	<b>56.9</b>	+ <b>.1</b>
<i>YIELD - Admits to Enrolled</i>	<b>58.3</b>	<b>59.4</b>	+ <b>1.1</b>

# Academic Enrollment Report

## Summer Report Day

### All Locations

	Semester 1995	Semester 1996	Semester 1997	Semester 1998	Semester 1999	Semester 2000	Semester 2001	% Change
Total Enrolled	1032	992	1017	1074	1162	1200	1207	0.58%
Credit Hours	4773	4585.5	4788	5162	5580	5613	5868.5	4.55%
Contact Hours	5132	4968	5105.5	5447.5	5891.5	5897.5	6154	4.35%
Average Load	4.63	4.46	4.71	4.81	4.8	4.68	4.86	3.85%
<b>STUDENT:</b>								
Full-Time	18	15	18	24	30	23	21	-8.70%
6-11 Credits	327	296	306	347	365	352	392	11.36%
1-5 Credits	687	681	693	703	767	825	794	-3.76%
Males	419	368	367	370	409	407	441	8.35%
Females	610	623	648	704	751	793	765	-3.53%
G.T. Residents	572	522	542	557	569	609	622	2.13%
Service Area	266	266	275	324	363	358	350	-2.23%
Other Counties	146	159	156	157	179	182	183	0.55%
Out-Of-State	40	33	33	31	39	38	37	-2.63%
Foreign	8	12	11	5	12	7	13	85.71%
VLC - In District						6	1	-83.33%
VLC - Out of District						0	1	0.00%
VLC - Out-Of-State						0	0	0.00%
Mean Age	28.21	28.49	27.98	28.55	28.08	27.57	27.23	-1.23%

**New residency codes for VLC students were added Summer 2000.**

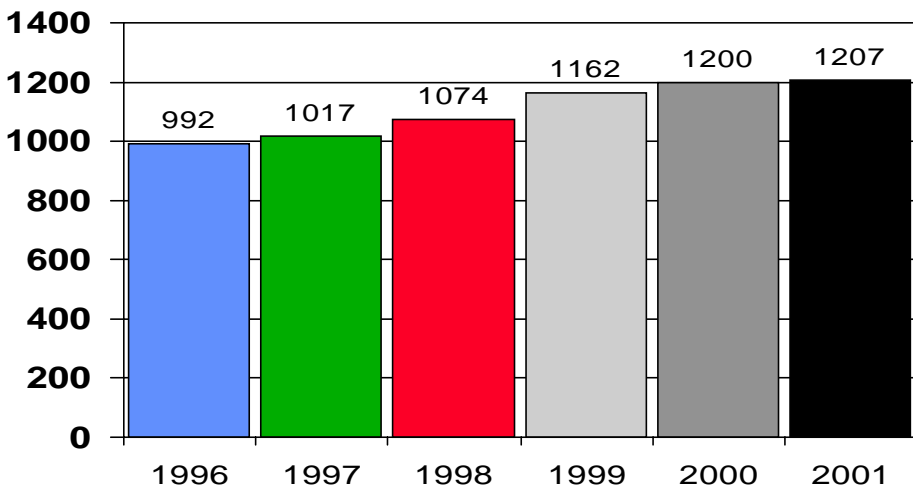
### Traverse City Campuses

	1995	1996	1997	1998	1999	2000	2001	
Total Enrolled	986	956	985	1043	1125	1174	1157	-1.45%
Credit Hours	4573	4428.5	4640	5016	5406	5485	5609.5	2.27%
Contact Hours	4902	4811	4957.5	5301.5	5717.5	5769.5	5895	2.18%
Average Load	4.64	4.63	4.71	4.81	4.81	4.91	4.85	-1.22%

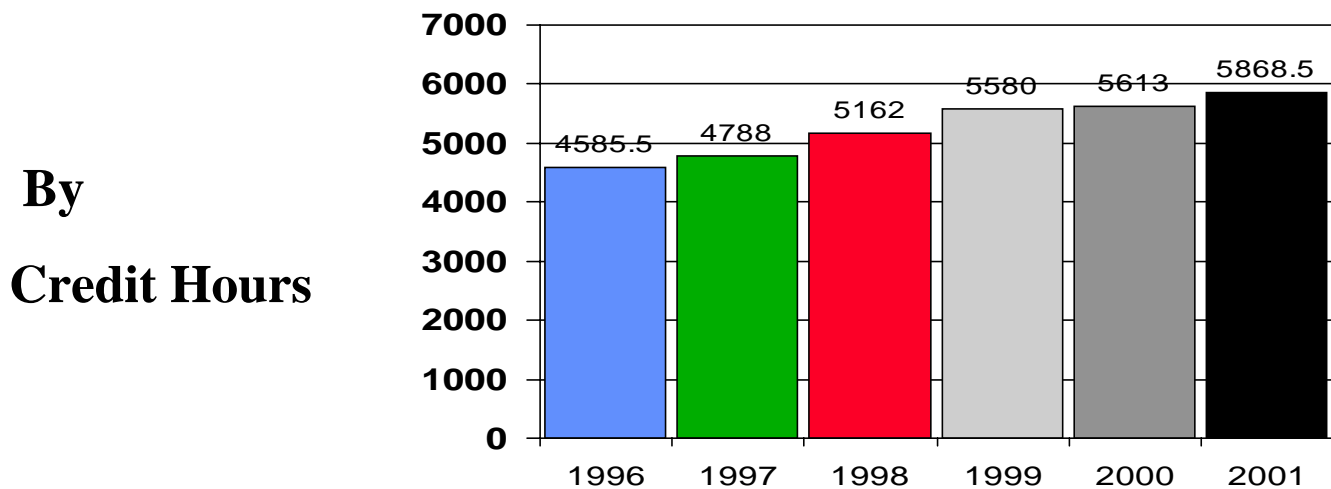
### Cadillac Campus

	1995	1996	1997	1998	1999	2000	2001	
Total Enrolled	50	38	34	37	43	36	59	63.89%
Credit Hours	200	157	148	146	174	128	259	102.34%
Contact Hours	200	157	148	146	174	128	259	102.34%
Average Load	4	4.13	4.35	3.95	4.05	3.56	4.39	23.31%

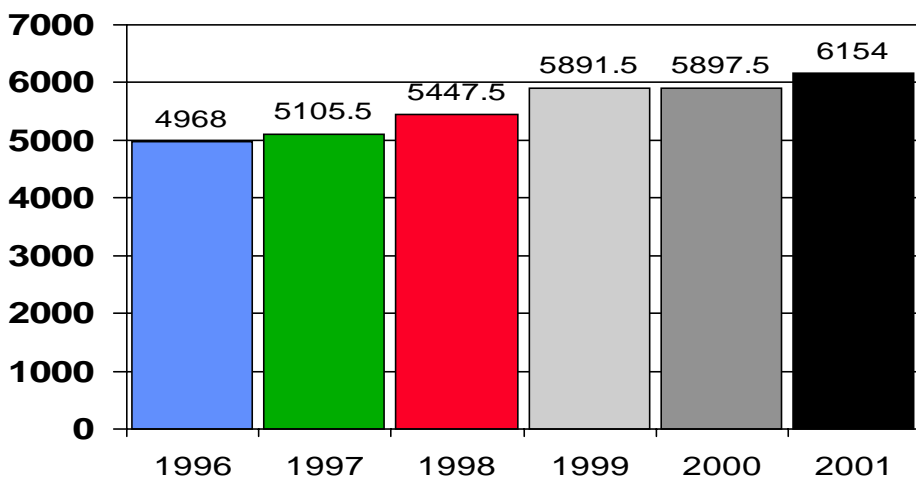
# Summer



**By Headcount**



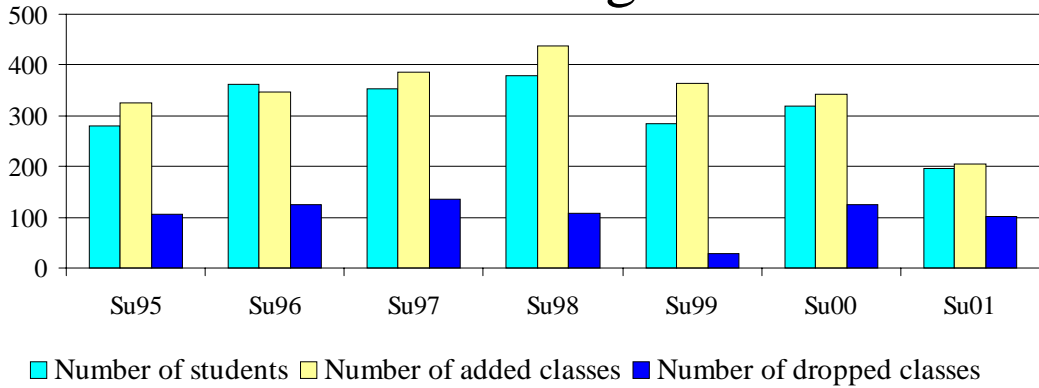
**By  
Credit Hours**



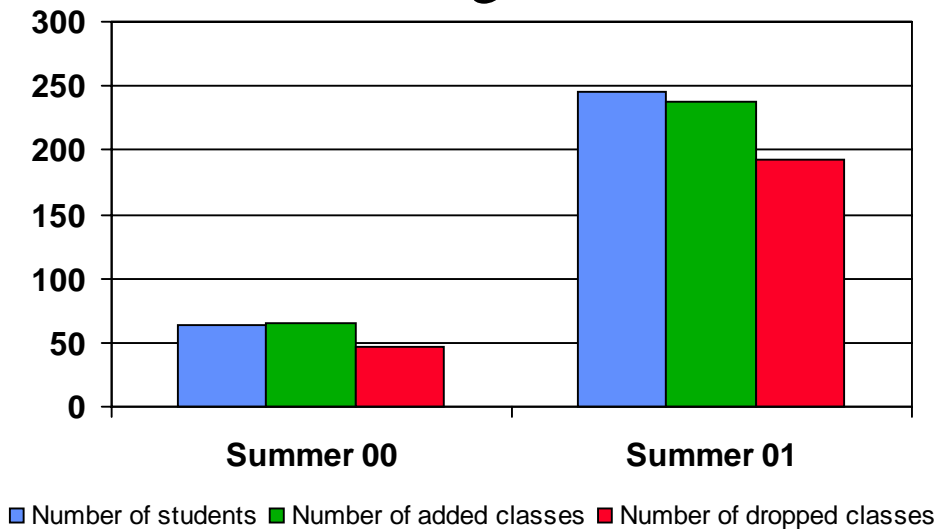
**By  
Contact Hours**

# Telephone and Web Registration

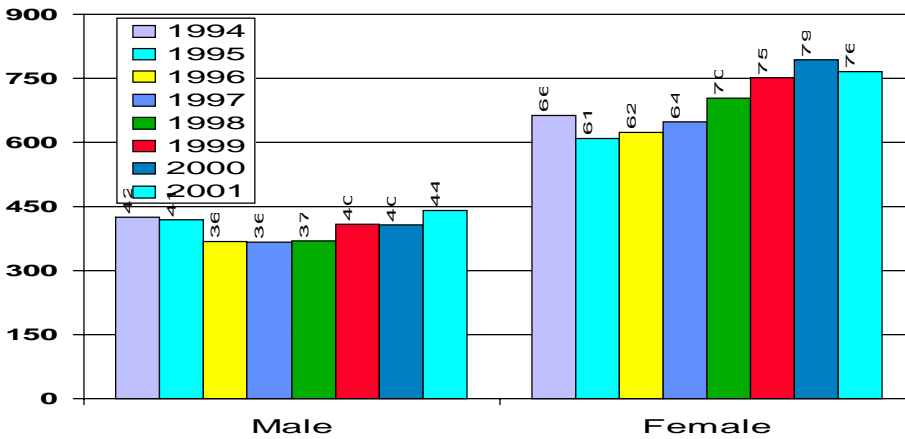
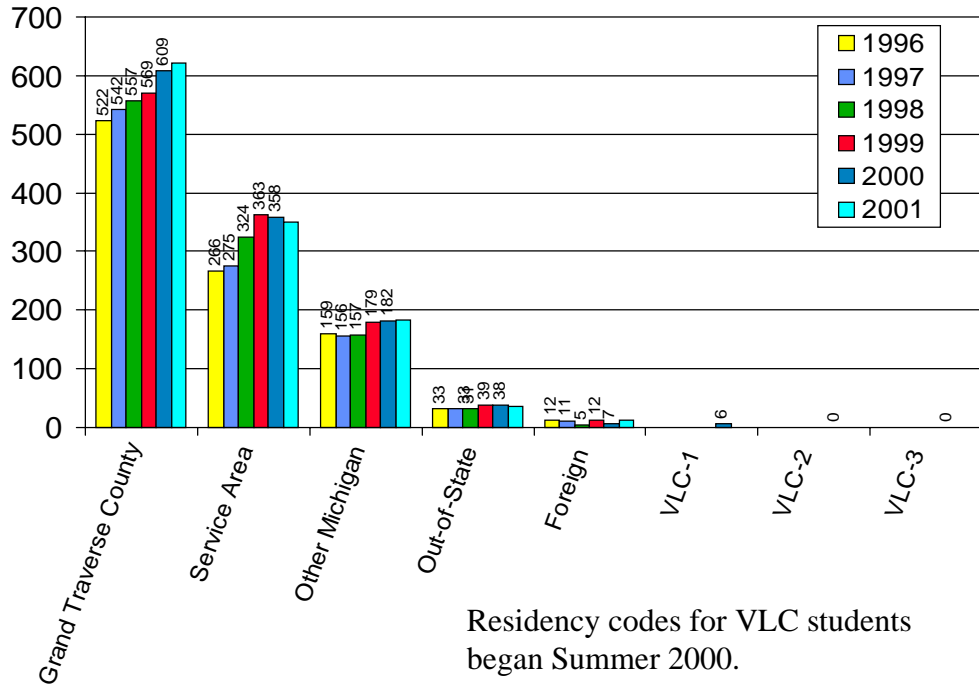
## TouchTone Registration



## Web Registration

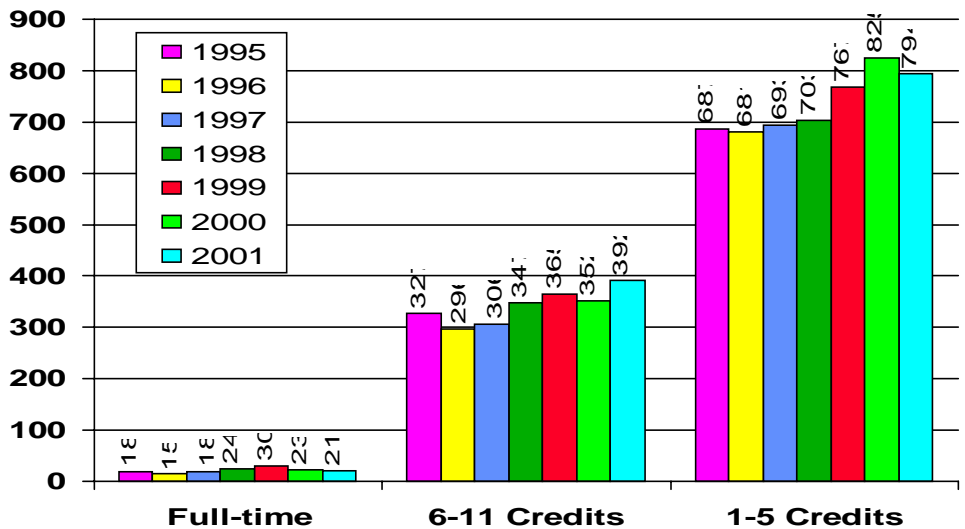


# By Residency



# By Gender

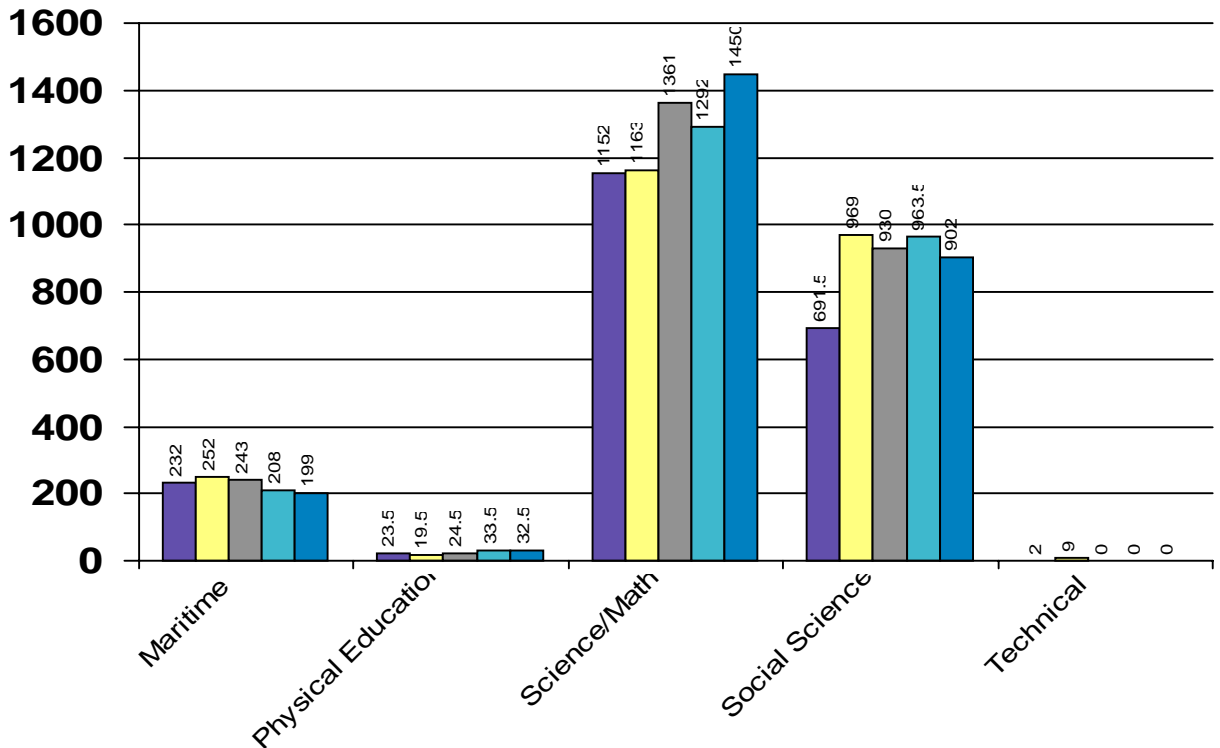
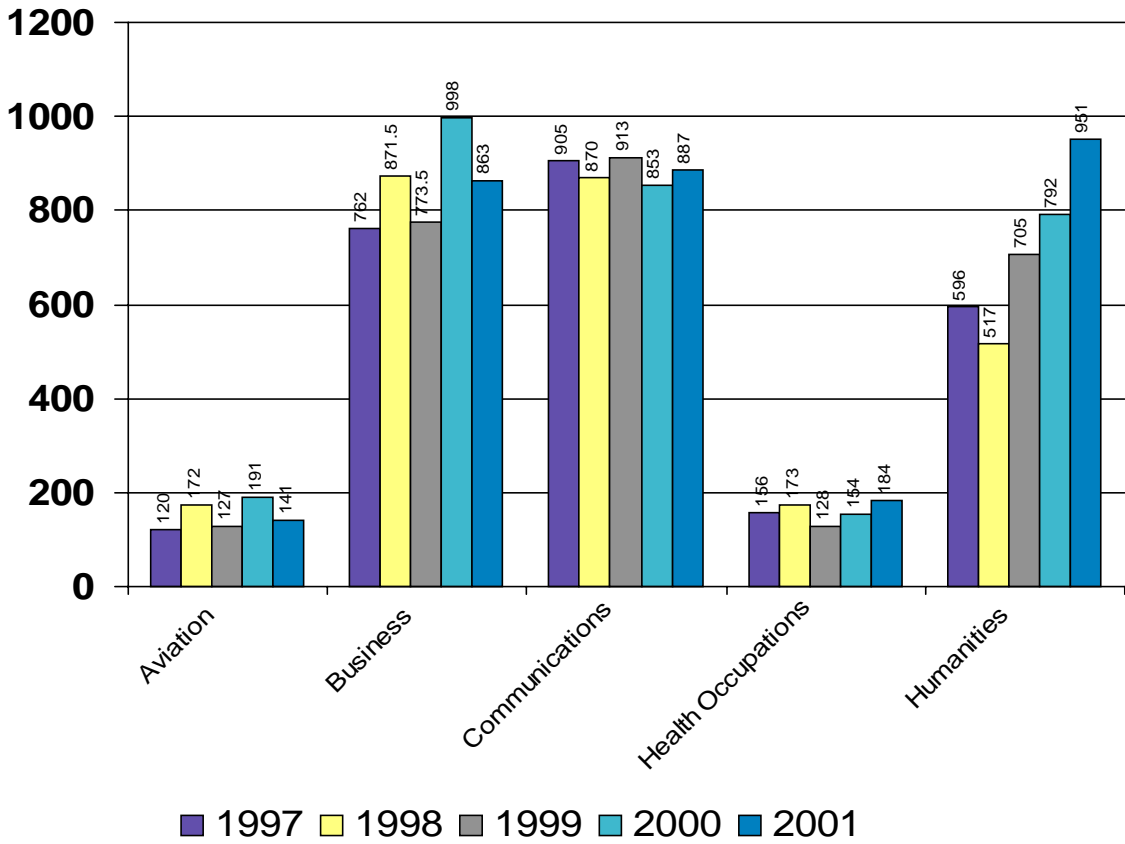
# By Enrollment Status



		Summer Credit Hours							
		Report Day Enrollments							
		Traverse City Campuses							
	1995	1996	1997	1998	1999	2000	2001	% Change	
AVF	120	122	94	102	93	131	90	-31.30%	
AVG	46	36	26	70	34	60	51	-15.00%	
<b>Aviation</b>	<b>166</b>	<b>158</b>	<b>120</b>	<b>172</b>	<b>127</b>	<b>191</b>	<b>141</b>	<b>-26.18%</b>	
ACC	136	180	171	216	199	250	227	-9.20%	
BPD	0	0	0	4.5	19.5	25	20	-20.00%	
BUS	150	36	159	127	84	114	117	2.63%	
CIS	211	236	224	270	258	370	329	-11.08%	
MGT	60	51	50	33	39	60	48	-20.00%	
MKT	33	21	48	3	0	0	0	0.00%	
OIS	146	133	86	178	180	141	106	-24.82%	
PAR	moved from Soc. Sci.		10	14	8	0	0	0.00%	
RSM	43	22	14	26	28	38	16	-57.89%	
<b>Business</b>	<b>779</b>	<b>679</b>	<b>762</b>	<b>871.5</b>	<b>815.5</b>	<b>998</b>	<b>863</b>	<b>-13.53%</b>	
COM	64	92	116	112	104	102	120	17.65%	
ENG	656	515	694	693	756	680	735	8.09%	
MLA	88	60	71	32	0	0	0	0.00%	
MLF	0	0	0	3	4	0	0	0.00%	
MLG	0	0	0	2	9	3	0	-100.00%	
MLJ	0	0	0	0	0	0	0	0.00%	
MLR	0	0	0	0	0	0	0	0.00%	
MLS	0	7	24	28	40	68	32	-52.94%	
THR	2	1	0	0	0	0	0	0.00%	
<b>Communication</b>	<b>810</b>	<b>675</b>	<b>905</b>	<b>870</b>	<b>913</b>	<b>853</b>	<b>887</b>	<b>3.99%</b>	
HAH	34	42	0	0	0	6	36	500.00%	
HDA	68	32	28	52	52	68	44	-35.29%	
HNR	129	197	128	121	76	80	104	30.00%	
<b>Health Occ</b>	<b>231</b>	<b>271</b>	<b>156</b>	<b>173</b>	<b>128</b>	<b>154</b>	<b>184</b>	<b>19.48%</b>	
ART	117	93	125	113	122	158	142	-10.13%	
HST	75	174	248	200	352	336	415	23.51%	
MUS	6	2	7	41	68	70	78	11.43%	
PHL	180	141	204	157	226	228	316	38.60%	
VCA	0	0	12	6	39	0	0	0.00%	
<b>Humanities</b>	<b>378</b>	<b>410</b>	<b>596</b>	<b>517</b>	<b>807</b>	<b>792</b>	<b>951</b>	<b>20.08%</b>	
MDK	279	240	150	168	156	144	169	17.36%	
MNG	66	78	82	84	87	64	30	-53.13%	
MNS	64	0	0	0	0	0	0	0.00%	
<b>Maritime</b>	<b>409</b>	<b>318</b>	<b>232</b>	<b>252</b>	<b>243</b>	<b>208</b>	<b>199</b>	<b>-4.33%</b>	
HF	1.5	10.5	12.5	12	3.5	4.5	8.5	88.89%	
OUT	31	0	0	0	13	10	6	0.00%	
PE	27.5	19	11	7.5	8	19	18	-5.26%	
<b>Physical Ed</b>	<b>60</b>	<b>29.5</b>	<b>23.5</b>	<b>19.5</b>	<b>24.5</b>	<b>33.5</b>	<b>32.5</b>	<b>-2.99%</b>	
AST	42	22	34	30	36	32	36	12.50%	
BIO	186	172	222	235	259	180	184	2.22%	
CHM	175	176	152	128	176	159	184	15.72%	
ENV	41	6	23	44	102	58	48	-17.24%	
MTH	678	696	653	662	739	791	970	22.63%	
PHY	0	52	68	64	49	72	28	-61.11%	
<b>Math/Science</b>	<b>1122</b>	<b>1124</b>	<b>1152</b>	<b>1163</b>	<b>1361</b>	<b>1292</b>	<b>1450</b>	<b>12.23%</b>	
CD	11	65	5	75	105	64	66	3.13%	
ECO	0	63	129	144	147	174	183	5.17%	
GEO	0	0	0	0	0	102	72	100.00%	
LWE	48	42	44	28	44	48	44	-8.33%	
PAR	0	34	moved to Business Discipline						
PLS	189	162	153	189	222	222	135	-39.19%	
PSY	188	162	204	225	222	219	264	20.55%	
SDC	7	0	9.5	10	6	8.5	6	-29.41%	
SOC	165	222	138	294	237	120	123	2.50%	
SWK	0	9	9	4	4	6	9	50.00%	
<b>Social Science</b>	<b>608</b>	<b>759</b>	<b>691.5</b>	<b>969</b>	<b>987</b>	<b>963.5</b>	<b>902</b>	<b>-6.38%</b>	
AUT	3	0	0	8	0	0	0	0.00%	
EET	2	0	0	0	0	0	0	0.00%	
MFG	5	5	2	1	0	0	0	0.00%	
<b>Technical</b>	<b>10</b>	<b>5</b>	<b>2</b>	<b>9</b>	<b>0</b>	<b>0</b>	<b>0</b>	<b>0.00%</b>	
<b>NMC Main Campus</b>	<b>4573</b>	<b>4428.5</b>	<b>4640</b>	<b>5016</b>	<b>5406</b>	<b>5485</b>	<b>5609.5</b>	<b>1.46%</b>	

# Summer Credit Hours Generated

## Traverse City Campuses



## Summer Contact Hours

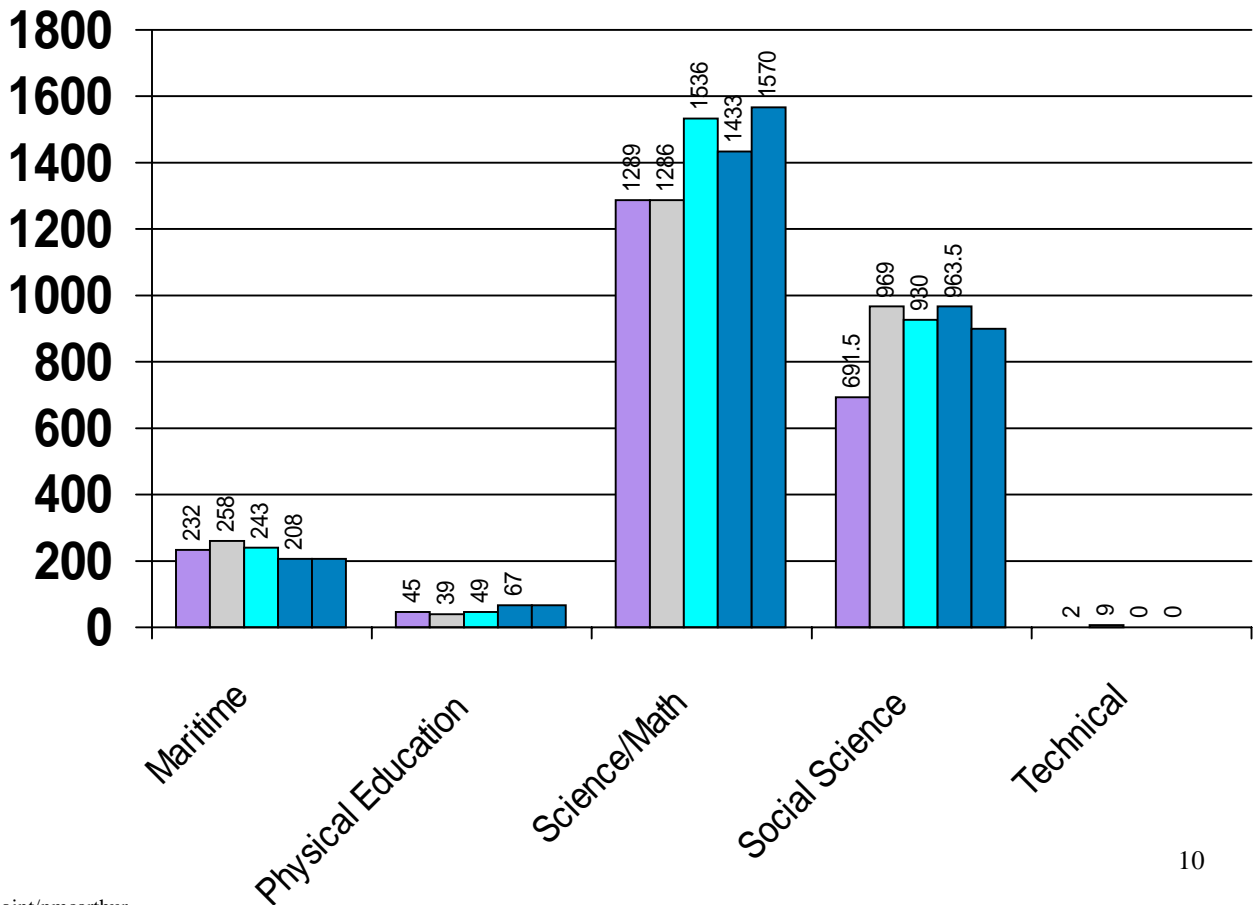
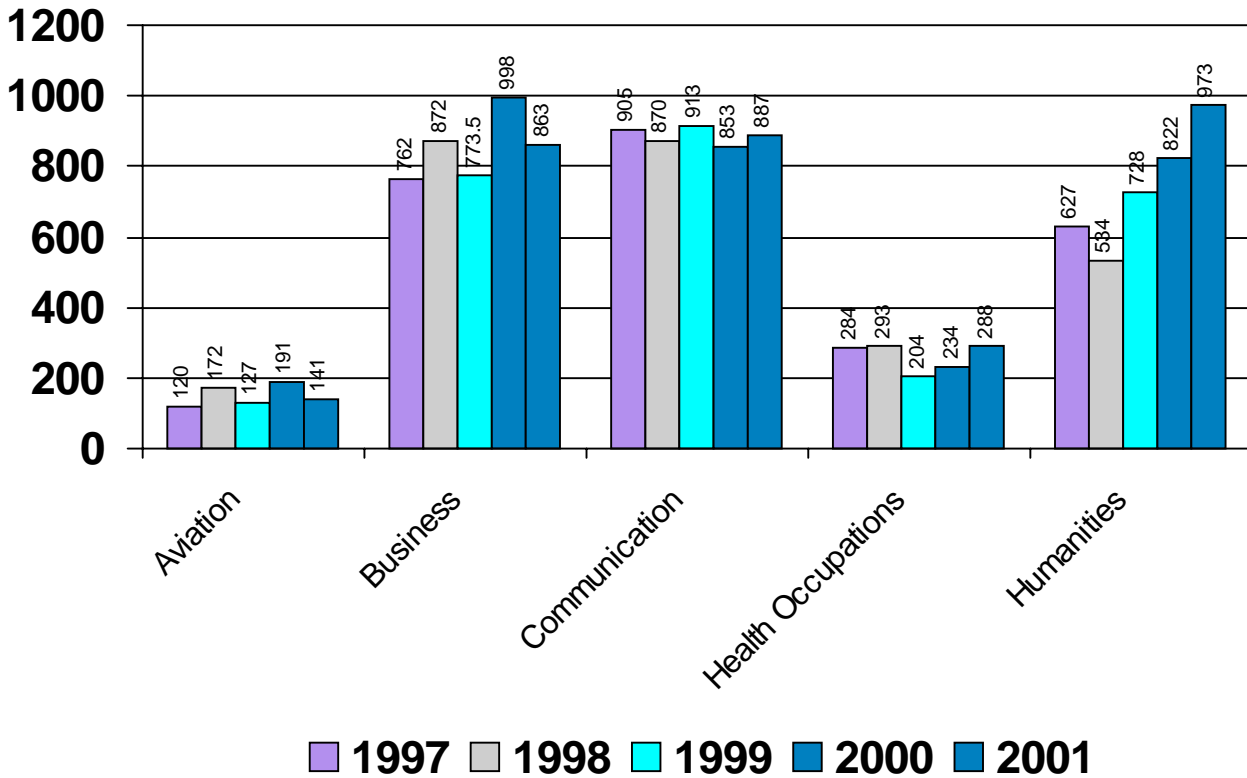
### Report Day Enrollments

### Traverse City Campuses

	1995	1996	1997	1998	1999	2000	2001	% Change
AVF	120	122	94	102	93	131	90	-31.30%
AVG	46	36	26	70	34	60	51	-15.00%
<b>Aviation</b>	<b>166</b>	<b>158</b>	<b>120</b>	<b>172</b>	<b>127</b>	<b>191</b>	<b>141</b>	<b>-26.18%</b>
ACC	136	180	171	216	199	250	227	-9.20%
BPD	0	0	0	5	19.5	25	20	-20.00%
BUS	150	36	159	127	84	114	117	2.63%
CIS	211	236	224	270	258	313	329	5.11%
MGT	60	51	50	33	39	117	48	-58.97%
MKT	33	21	48	3	0	0	0	0.00%
OIS	146	133	86	178	180	141	106	-24.82%
PAR	moved from Soc Sci		10	14	8	0	0	0.00%
RSM	43	22	14	26	28	38	16	-57.89%
<b>Business</b>	<b>779</b>	<b>679</b>	<b>762</b>	<b>872</b>	<b>815.5</b>	<b>998</b>	<b>863</b>	<b>-13.53%</b>
COM	64	92	116	112	104	102	120	17.65%
ENG	656	515	694	693	756	680	735	8.09%
MLA	88	60	71	32	0	0	0	0.00%
MLF	0	0	0	3	4	0	0	0.00%
MLG	0	0	0	2	9	3	0	-100.00%
MLJ	0	0	0	0	0	0	0	0.00%
MLR	0	0	0	0	0	0	0	0.00%
MLS	0	7	24	28	40	68	32	-52.94%
THR	2	1	0	0	0	0	0	0.00%
<b>Communication</b>	<b>810</b>	<b>675</b>	<b>905</b>	<b>870</b>	<b>913</b>	<b>853</b>	<b>887</b>	<b>3.99%</b>
HAH	34	42	0	0	0	6	36	500.00%
HDA	68	32	28	52	52	68	44	-35.29%
HNR	257	397	256	241	152	160	208	30.00%
<b>Health Occ</b>	<b>359</b>	<b>471</b>	<b>284</b>	<b>293</b>	<b>204</b>	<b>234</b>	<b>288</b>	<b>23.08%</b>
ART	144	123	153	130	144	187	163	-12.83%
HST	75	174	248	200	352	336	415	23.51%
MUS	6	2	10	41	69	71	79	11.27%
PHL	180	141	204	157	226	228	316	38.60%
VCA	0	0	12	6	52	0	0	0.00%
<b>Humanities</b>	<b>405</b>	<b>440</b>	<b>627</b>	<b>534</b>	<b>843</b>	<b>822</b>	<b>973</b>	<b>18.37%</b>
MDK	279	240	150	174	156	144	176	22.22%
MNG	66	78	82	84	87	64	30	-53.13%
MNS	64	0	0	0	0	0	0	0.00%
<b>Maritime</b>	<b>409</b>	<b>318</b>	<b>232</b>	<b>258</b>	<b>243</b>	<b>208</b>	<b>206</b>	<b>-0.96%</b>
HF	3	21	25	24	7	9	17	88.89%
OUT	62	0	0	0	26	20	12	100.00%
PE	55	38	20	15	16	38	36	-5.26%
<b>Physical Ed</b>	<b>120</b>	<b>59</b>	<b>45</b>	<b>39</b>	<b>49</b>	<b>67</b>	<b>65</b>	<b>-2.99%</b>
AST	42	22	34	30	36	32	36	12.50%
BIO	238	220	283	296	327	229	233	1.75%
CHM	218	220	190	160	226	204	230	12.75%
ENV	60	9	34	58	134	76	60	-21.05%
MTH	678	711	663	662	752	802	976	21.70%
PHY	0	65	85	80	61	90	35	-61.11%
<b>Math/Science</b>	<b>1236</b>	<b>1247</b>	<b>1289</b>	<b>1286</b>	<b>1536</b>	<b>1433</b>	<b>1570</b>	<b>9.56%</b>
CD	11	65	5	75	105	64	66	3.13%
ECO	0	63	129	144	147	174	183	5.17%
GEO	0	0	0	0	0	102	72	-29.41%
LWE	48	42	44	28	44	48	44	-8.33%
PAR	0	34	moved to Business Discipline					
PLS	189	162	153	189	222	222	135	-39.19%
PSY	188	162	204	225	222	219	264	20.55%
SDC	7	0	9.5	10	6	8.5	6	-29.41%
SOC	165	222	138	294	237	120	123	2.50%
SWK	0	9	9	4	4	6	9	50.00%
<b>Social Science</b>	<b>608</b>	<b>759</b>	<b>691.5</b>	<b>969</b>	<b>987</b>	<b>963.5</b>	<b>902</b>	<b>-6.38%</b>
AUT	3	0	0	8	0	0	0	0.00%
EET	2	0	0	0	0	0	0	0.00%
MFG	5	5	2	1	0	0	0	0.00%
<b>Technical</b>	<b>10</b>	<b>5</b>	<b>2</b>	<b>9</b>	<b>0</b>	<b>0</b>	<b>0</b>	<b>0.00%</b>
<b>N.M.C. Main Campus</b>	<b>4902</b>	<b>4811</b>	<b>4957.5</b>	<b>5302</b>	<b>5717.5</b>	<b>5769.5</b>	<b>5895</b>	<b>2.18%</b>

# Summer Credit Hours Generated

## Traverse City Campuses



# Summer Credit and Contact Hours

## Report Day Enrollments

### Cadillac Campus

	1995	1996	1997	1998	1999	2000	2001	% Change
BUS	0	0	0	0	0	0	0	0.00%
CIS	30	0	0	0	0	0	0	0.00%
OIS	36	0	0	0	0	0	0	0.00%
PAR	moved from Soc Sci		0	0	0	0	0	0.00%
<b>Business</b>	<b>66</b>	<b>0</b>	<b>0</b>	<b>0</b>	<b>0</b>	<b>0</b>	<b>0</b>	<b>0.00%</b>
COM	0	0	0	16	0	0	0	0.00%
ENG	20	44	28	0	0	0	52	0.00%
<b>Communication</b>	<b>20</b>	<b>44</b>	<b>28</b>	<b>16</b>	<b>0</b>	<b>0</b>	<b>52</b>	<b>100.00%</b>
HST	18	0	21	42	39	0	64	100.00%
MUS	0	0	0	0	0	0	0	0.00%
PHL	30	0	0	0	21	0	0	0.00%
VCA	0	0	0	0	0	0	0	0.00%
<b>Humanities</b>	<b>48</b>	<b>0</b>	<b>21</b>	<b>42</b>	<b>60</b>	<b>0</b>	<b>64</b>	<b>100.00%</b>
MTH	0	44	24	28	36	44	56	27.27%
<b>Math/Science</b>	<b>0</b>	<b>44</b>	<b>24</b>	<b>28</b>	<b>36</b>	<b>44</b>	<b>56</b>	<b>27.27%</b>
PLS	24	27	30	18	27	48	30	-37.50%
PSY	42	42	21	21	51	18	33	83.33%
SOC	0	0	24	21	0	18	24	33.33%
<b>Social Science</b>	<b>66</b>	<b>69</b>	<b>75</b>	<b>60</b>	<b>78</b>	<b>84</b>	<b>87</b>	<b>3.57%</b>
<b>NMC Cadillac Campus</b>	<b>200</b>	<b>157</b>	<b>148</b>	<b>146</b>	<b>174</b>	<b>128</b>	<b>259</b>	<b>102.34%</b>

sum\_cont/excel/nmcarthur/june01

