



# Enrollment Report

## Summer Semester 2003

Report Day – June 18, 2003

Carol Taberski, Registrar/Interim Director of Admissions  
Nancy McArthur, Records Technician

Summer Semester 2003  
Report Day – June 18, 2003

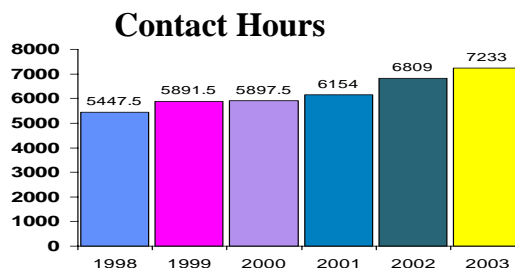
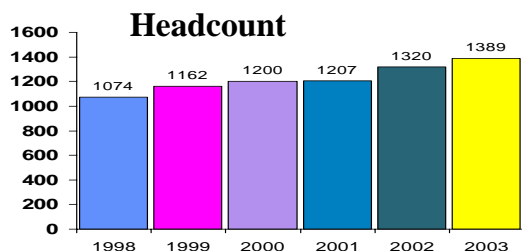
Table of Contents

Summary .....	1
<b>Academic Enrollment Report .....</b>	<b>2</b>
Headcount chart .....	3
Credit Hours Generated chart .....	3
Contact Hours Generated chart .....	3
TouchTone Registration chart.....	3
Web Registration chart .....	3
Residency chart .....	4
Gender chart.....	4
Enrollment Status chart.....	4
Traverse City Campuses Credit Hours by Discipline & Chart .....	5
Traverse City Campuses Credit Hours by Discipline & Chart (continued).....	6
Traverse City Campuses Contact Hours by Discipline & Chart.....	7
Traverse City Campuses Contact Hours by Discipline & Chart (continued).....	8
Cadillac Campus Credit & Contact Hours Generated .....	9
Cadillac Campus Credit/Contact Hours and Headcount chart.....	9

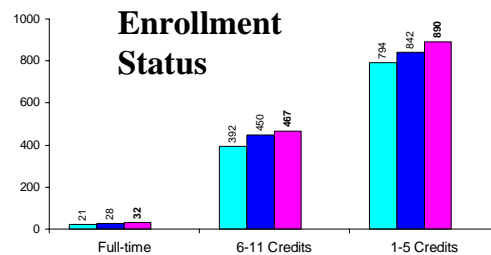
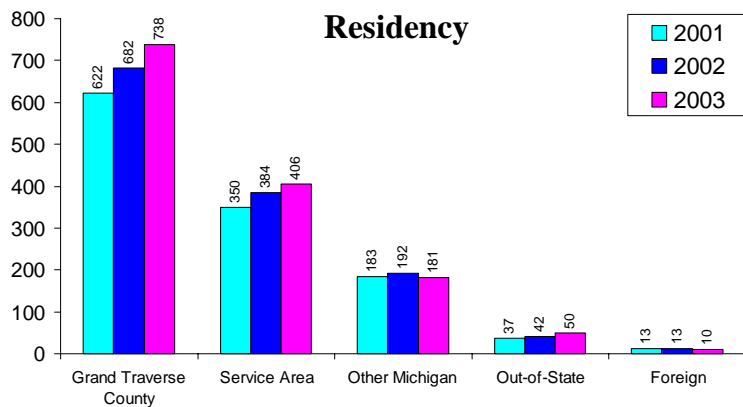
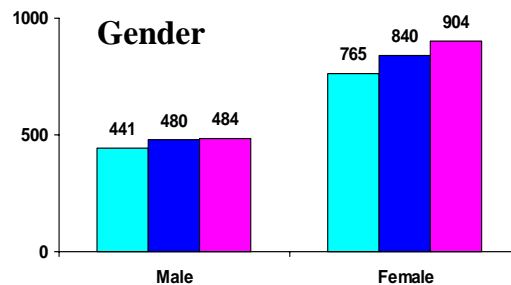


- **Enrollment Report**
- **Summer Semester 2003**
- **Report Day – June 18, 2003**

Summer enrollment at Northwestern Michigan College continues to increase at a steady pace since 1998, at an average of 4% to 5% for both contact hours and headcount. A number of community colleges around the state showed significant increases. See the MACRAO Community College Weekly Enrollment Report for Spring/Summer 2003 at <http://www.macrao.org/ccweekly.asp>.



Many measurement variables increased: Average load; full-time, half time, and part-time students; males and females: in-district, and out-of-district. The number of newly admitted students increased over six percent, going from 607 to 648.



### Headcount analysis

The digital dashboard on the NMC web site contains detailed information about headcount with analysis by residency, age, and student type.

[http://nmc.edu/~webprt/registration/report\\_date/200303/sfrhanl\\_summer.htm](http://nmc.edu/~webprt/registration/report_date/200303/sfrhanl_summer.htm)

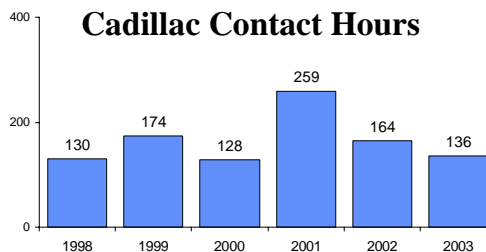
### Program analysis

[http://nmc.edu/~webprt/registration/report\\_date/200303/sfrprog1\\_summer.htm](http://nmc.edu/~webprt/registration/report_date/200303/sfrprog1_summer.htm)

### Admissions application yields

[http://nmc.edu/~webprt/admissions/report\\_date/200303/sarhanl\\_summer.htm](http://nmc.edu/~webprt/admissions/report_date/200303/sarhanl_summer.htm)

Cadillac had significant decreases. Ten classes were offered with four classes held. The decrease in headcount was from 46 to 33, a drop of 28 percent, credit hours went from 164 to 136, a drop of 17 percent.



**Academic Enrollment Report  
Summer Report Day**

**All Locations**

	Semester 1998	Semester 1999	Semester 2000	Semester 2001	Semester 2002	Semester 2003	% Change
Total Enrolled	1074	1162	1200	1207	1320	1389	5.23%
Credit Hours	5162	5580	5613	5868.5	6518.5	6858	5.21%
Contact Hours	5447.5	5891.5	5897.5	6154	6809	7233	6.23%
Average Load	4.81	4.8	4.68	4.86	4.94	4.94	0.00%
<b>STUDENT:</b>							
Full-Time	24	30	23	21	28	32	14.29%
6-11 Credits	347	365	352	392	450	467	3.78%
1-5 Credits	703	767	825	794	842	890	5.70%
Males	370	409	407	441	480	484	0.83%
Females	704	751	793	765	840	904	7.62%
G.T. Residents	557	569	609	622	682	738	8.21%
Service Area	324	363	358	350	384	406	5.73%
Other Counties	157	179	182	183	192	181	-5.73%
Out-Of-State	31	39	38	37	42	50	19.05%
Foreign	5	12	7	13	13	10	-23.08%
VLC - In District			6	1	6	4	-33.33%
VLC - Out of District			0	1	1	0	-100.00%
VLC - Out-Of-State			0	0	0	0	0.00%
Mean Age	28.55	28.08	27.57	27.23	27.64	27.56	-0.29%

**Traverse City Campuses**

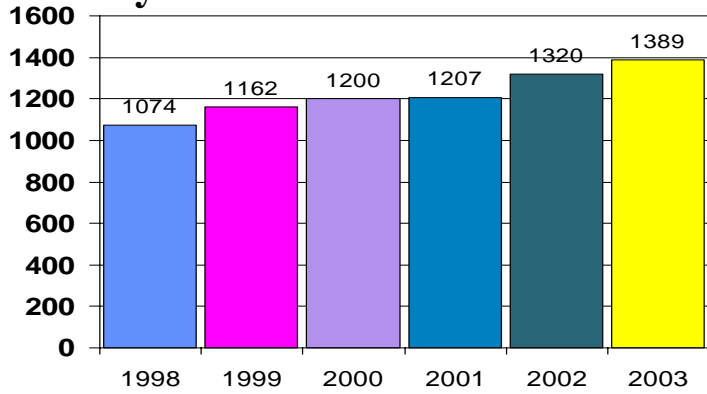
	1998	1999	2000	2001	2002	2003	
Total Enrolled	1043	1125	1174	1157	1283	1365	6.39%
Credit Hours	5016	5406	5485	5609.5	6354.5	6722	5.78%
Contact Hours	5301.5	5717.5	5769.5	5895	6645	7097	6.80%
Average Load	4.81	4.81	4.91	4.85	4.95	4.92	-0.57%

**Cadillac Campus**

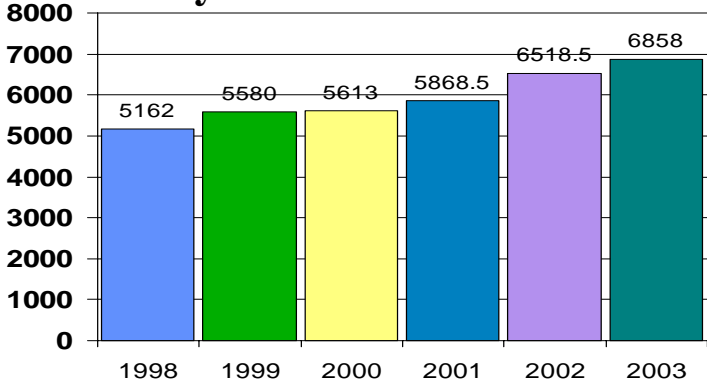
	1998	1999	2000	2001	2002	2003	
Total Enrolled	37	43	36	59	46	33	-28.26%
Credit Hours	146	174	128	259	164	136	-17.07%
Contact Hours	146	174	128	259	164	136	-17.07%
Average Load	3.95	4.05	3.56	4.39	3.57	4.12	15.59%

# Summer

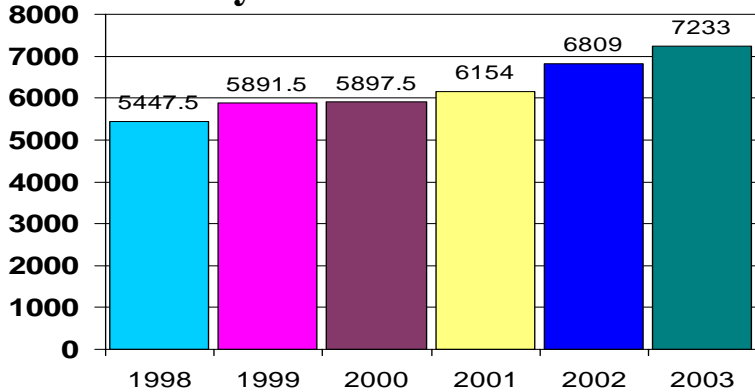
## By Headcount



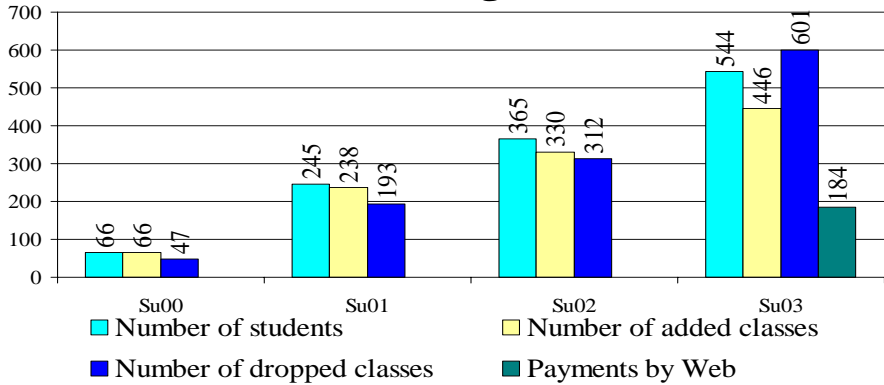
## By Credit Hours



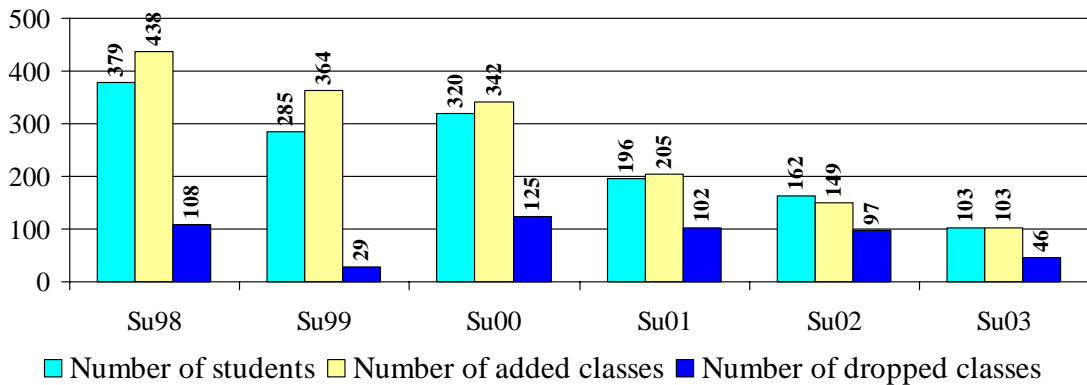
## By Contact Hours



## Web Registration

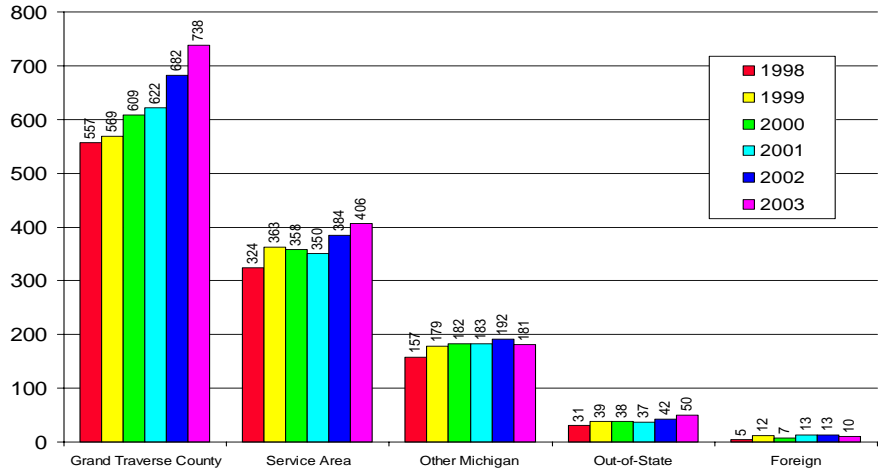


## TouchTone Registration

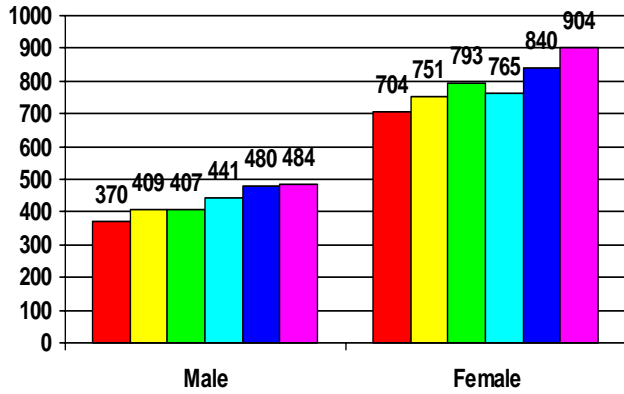


# Demographics

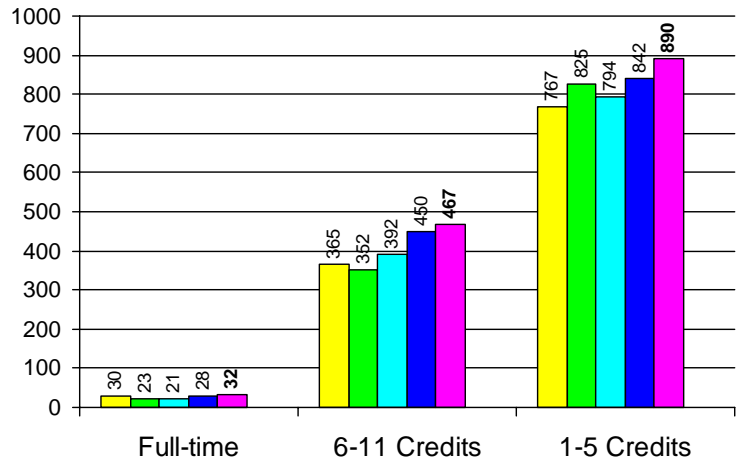
## By Residency



## By Gender

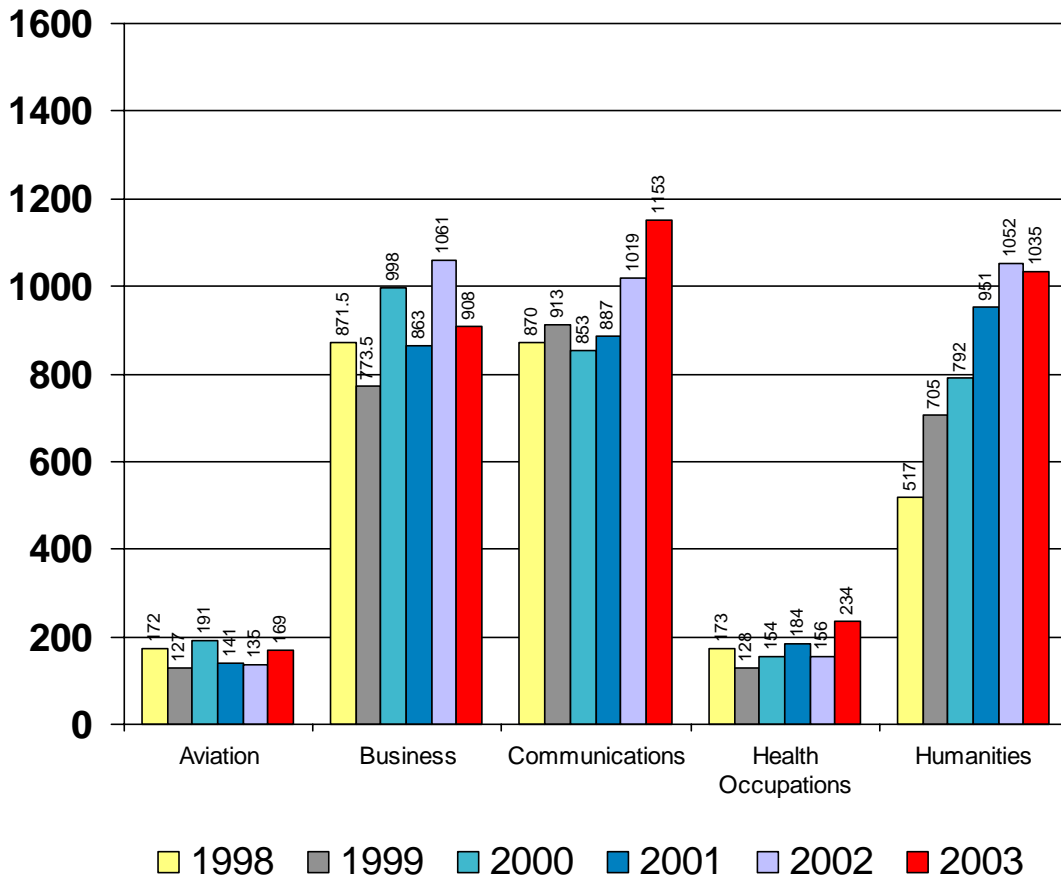


## By Enrollment Status



### Summer Credit Hours

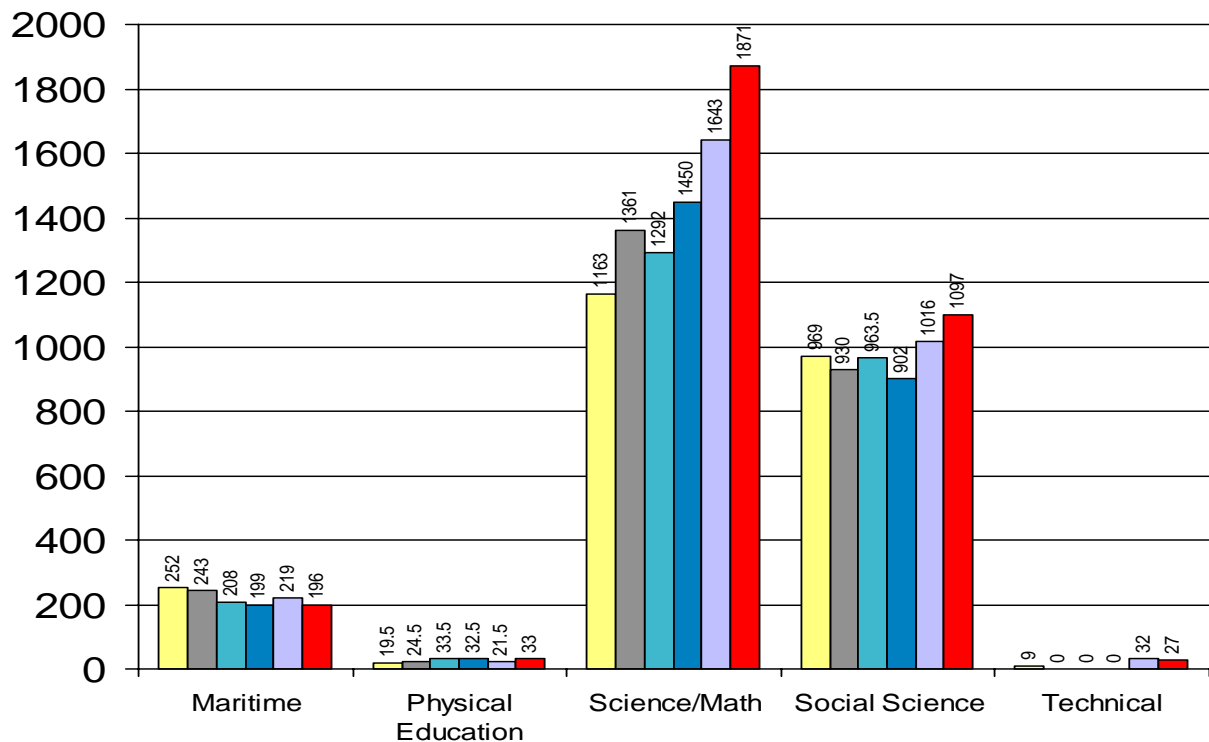
	Traverse City Campuses						
	1998	1999	2000	2001	2002	2003	% Change
AVF	102	93	131	90	110	104	-5.45%
AVG	70	34	60	51	25	65	160.00%
<b>Aviation</b>	<b>172</b>	<b>127</b>	<b>191</b>	<b>141</b>	<b>135</b>	<b>169</b>	<b>25.19%</b>
ACC	216	199	250	227	268	284	5.97%
BPD	4.5	19.5	25	20	0	0	0.00%
BUS	127	84	114	117	198	252	27.27%
CIS	270	258	370	329	309	267	-13.59%
CUL						28	100.00%
MGT	33	39	60	48	48	48	0.00%
MKT	3	0	0	0	81	27	-66.67%
OIS	178	180	141	106	119	0	-100.00%
PAR	14	8	0	0	0	0	0.00%
RSM	26	28	38	16	38	2	-94.74%
<b>Business</b>	<b>871.5</b>	<b>815.5</b>	<b>998</b>	<b>863</b>	<b>1061</b>	<b>908</b>	<b>-14.42%</b>
COM	112	104	102	120	60	60	0.00%
ENG	693	756	680	735	891	985	10.55%
MLA	32	0	0	0	0	0	0.00%
MLF	3	4	0	0	0	0	0.00%
MLG	2	9	3	0	4	0	-100.00%
MLS	28	40	68	32	64	108	68.75%
THR	0	0	0	0	0	0	0.00%
<b>Communication</b>	<b>870</b>	<b>913</b>	<b>853</b>	<b>887</b>	<b>1019</b>	<b>1153</b>	<b>13.15%</b>
HAH	0	0	6	36	20	0	-100.00%
HDA	52	52	68	44	56	100	78.57%
HNR	121	76	80	104	80	134	67.50%
<b>Health Occ</b>	<b>173</b>	<b>128</b>	<b>154</b>	<b>184</b>	<b>156</b>	<b>234</b>	<b>50.00%</b>
ART	113	122	158	142	175	120	-31.43%
HST	200	352	336	415	456	440	-3.51%
MUS	41	68	70	78	73	120	64.38%
PHL	157	226	228	316	348	327	-6.03%
VCA	6	39	0	0	0	28	0.00%
<b>Humanities</b>	<b>517</b>	<b>807</b>	<b>792</b>	<b>951</b>	<b>1052</b>	<b>1035</b>	<b>-1.62%</b>



### Summer Credit Hours

#### Traverse City Campuses

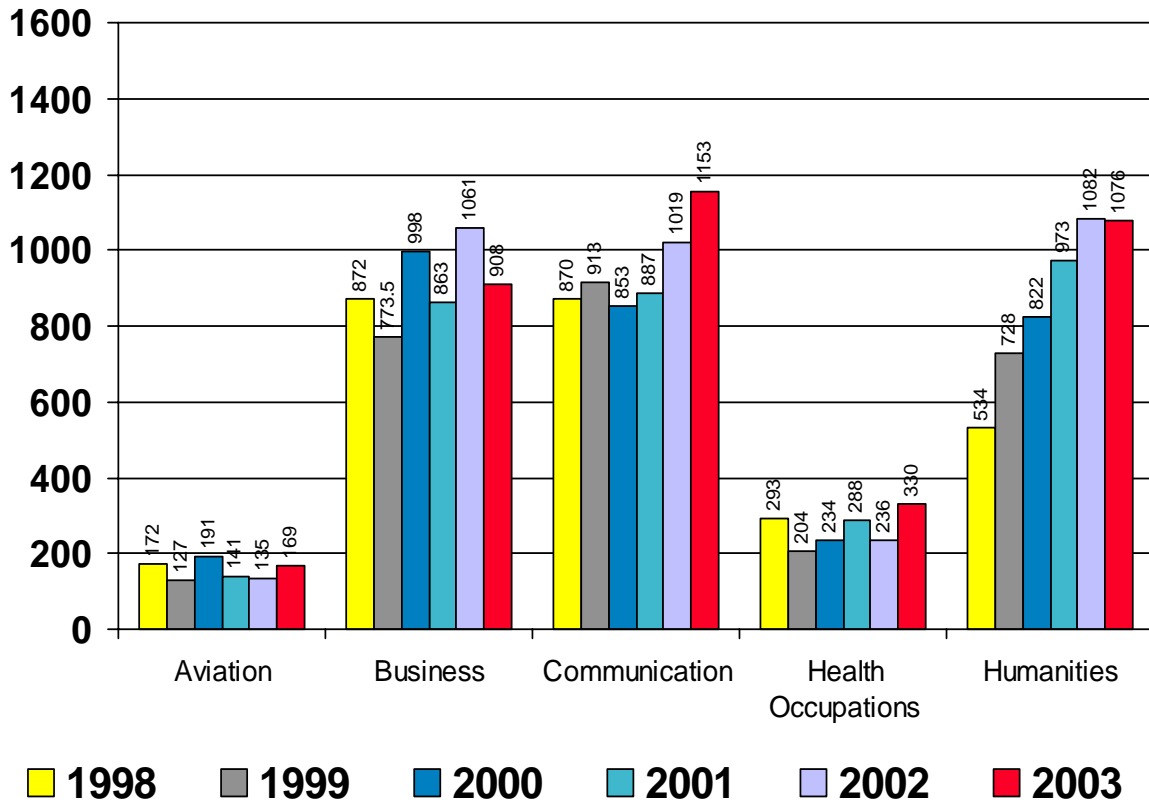
	1998	1999	2000	2001	2002	2003	% Change
MDK	168	156	144	169	144	141	-2.08%
MNG	84	87	64	30	75	55	-26.67%
MNS	0	0	0	0	0	0	0.00%
<b>Maritime</b>	<b>252</b>	<b>243</b>	<b>208</b>	<b>199</b>	<b>219</b>	<b>196</b>	<b>-10.50%</b>
HF	12	3.5	4.5	8.5	3	8.5	240.00%
OUT	0	13	10	6	7	9	0.00%
PE	7.5	8	19	18	12	15.5	29.17%
<b>Physical Ed</b>	<b>19.5</b>	<b>24.5</b>	<b>33.5</b>	<b>32.5</b>	<b>21.5</b>	<b>33</b>	<b>53.49%</b>
AST	30	36	32	36	36	32	-11.11%
BIO	235	259	180	184	196	304	55.10%
CHM	128	176	159	184	219	304	38.81%
ENV	44	102	58	48	84	76	-9.52%
MTH	662	739	791	970	1040	1119	7.60%
PHY	64	49	72	28	68	36	-47.06%
<b>Math/Science</b>	<b>1163</b>	<b>1361</b>	<b>1292</b>	<b>1450</b>	<b>1643</b>	<b>1871</b>	<b>13.88%</b>
CD	75	105	64	66	84	65	-22.62%
ECO	144	147	174	183	189	246	30.16%
EDU				0	7	1	100.00%
GEO	0	0	102	72	114	120	100.00%
LWE	28	44	48	44	40	12	-70.00%
PAR							
PLS	189	222	222	135	204	84	-58.82%
PSY	225	222	219	264	287	366	27.53%
SDC	10	6	8.5	6	0	0	0.00%
SOC	294	237	120	123	87	192	120.69%
SWK	4	4	6	9	4	11	175.00%
<b>Social Science</b>	<b>969</b>	<b>987</b>	<b>963.5</b>	<b>902</b>	<b>1016</b>	<b>1097</b>	<b>7.97%</b>
AUT	8	0	0	0	4	0	-100.00%
EET	0	0	0	0	0	0	0.00%
ITA				0	6	14	133.33%
ITPD				0	21	13	-38.10%
MFG	1	0	0	0	1	0	-100.00%
<b>Technical</b>	<b>9</b>	<b>0</b>	<b>0</b>	<b>0</b>	<b>32</b>	<b>27</b>	<b>-15.63%</b>



## Summer Contact Hours

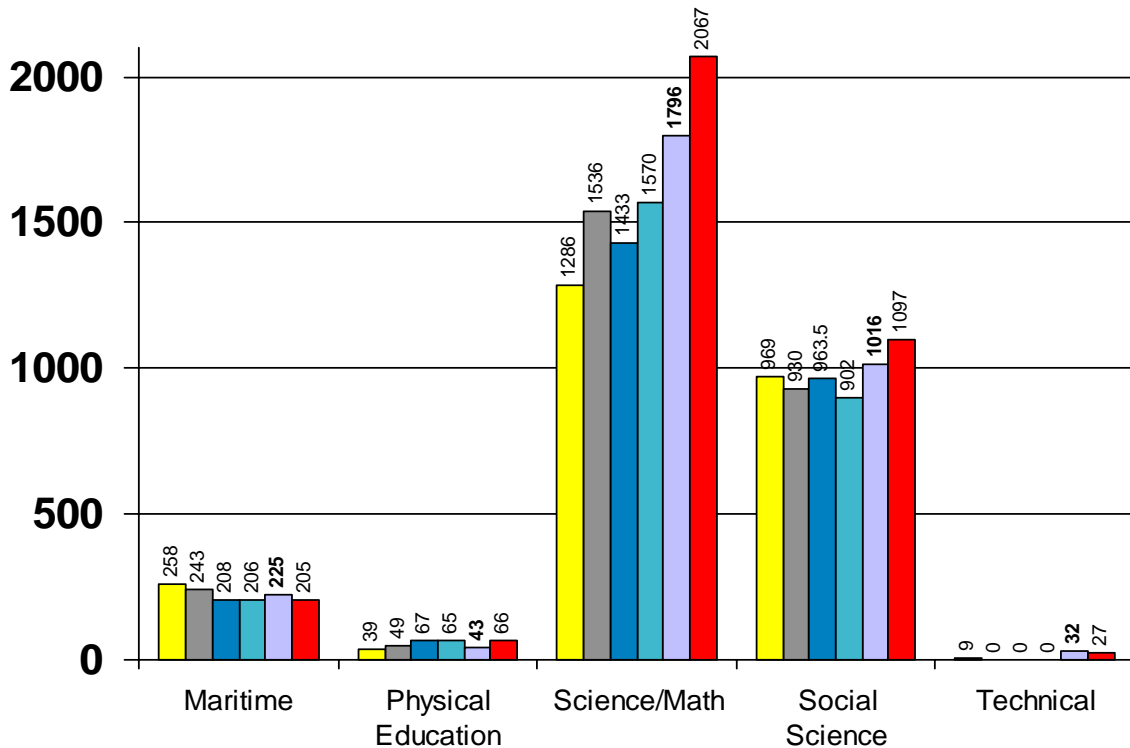
### Traverse City Campuses

	1998	1999	2000	2001	2002	2003	% Change
AVF	102	93	131	90	110	104	-5.45%
AVG	70	34	60	51	25	65	160.00%
<b>Aviation</b>	<b>172</b>	<b>127</b>	<b>191</b>	<b>141</b>	<b>135</b>	<b>169</b>	<b>25.19%</b>
ACC	216	199	250	227	268	284	5.97%
BPD	5	19.5	25	20	0	0	0.00%
BUS	127	84	114	117	198	252	27.27%
CIS	270	258	313	329	309	267	-13.59%
CUL						28	100.00%
MGT	33	39	117	48	48	48	0.00%
MKT	3	0	0	0	81	27	100.00%
OIS	178	180	141	106	119	0	-100.00%
PAR	14	8	0	0	0	0	0.00%
RSM	26	28	38	16	38	2	-94.74%
<b>Business</b>	<b>872</b>	<b>815.5</b>	<b>998</b>	<b>863</b>	<b>1061</b>	<b>908</b>	<b>-14.42%</b>
COM	112	104	102	120	60	60	0.00%
ENG	693	756	680	735	891	985	10.55%
MLA	32	0	0	0	0	0	0.00%
MLF	3	4	0	0	0	0	0.00%
MLG	2	9	3	0	4	0	100.00%
MLS	28	40	68	32	64	108	68.75%
THR	0	0	0	0	0	0	0.00%
<b>Communication</b>	<b>870</b>	<b>913</b>	<b>853</b>	<b>887</b>	<b>1019</b>	<b>1153</b>	<b>13.15%</b>
HAH	0	0	6	36	20	0	-100.00%
HDA	52	52	68	44	56	100	78.57%
HNR	241	152	160	208	160	230	43.75%
<b>Health Occ</b>	<b>293</b>	<b>204</b>	<b>234</b>	<b>288</b>	<b>236</b>	<b>330</b>	<b>39.83%</b>
ART	130	144	187	163	205	160	-21.95%
HST	200	352	336	415	456	440	-3.51%
MUS	41	69	71	79	73	121	65.75%
PHL	157	226	228	316	348	327	-6.03%
VCA	6	52	0	0	0	28	0.00%
<b>Humanities</b>	<b>534</b>	<b>843</b>	<b>822</b>	<b>973</b>	<b>1082</b>	<b>1076</b>	<b>-0.55%</b>



## Summer Contact Hours

	Traverse City Campuses							
	1997	1998	1999	2000	2001	2002	2003	
MDK	174	156	144	176	150	150	0.00%	
MNG	84	87	64	30	75	55	-26.67%	
MNS	0	0	0	0	0	0	0.00%	
<b>Maritime</b>	<b>258</b>	<b>243</b>	<b>208</b>	<b>206</b>	<b>225</b>	<b>205</b>	<b>-8.89%</b>	
HF	24	7	9	17	5	17	240.00%	
OUT	0	26	20	12	14	18	100.00%	
PE	15	16	38	36	24	31	29.17%	
<b>Physical Ed</b>	<b>39</b>	<b>49</b>	<b>67</b>	<b>65</b>	<b>43</b>	<b>66</b>	<b>53.49%</b>	
AST	30	36	32	36	36	32	-11.11%	
BIO	296	327	229	233	245	382	55.92%	
CHM	160	226	204	230	282	392	39.01%	
ENV	58	134	76	60	108	97	-10.19%	
MTH	662	752	802	976	1040	1119	7.60%	
PHY	80	61	90	35	85	45	-47.06%	
<b>Math/Science</b>	<b>1286</b>	<b>1536</b>	<b>1433</b>	<b>1570</b>	<b>1796</b>	<b>2067</b>	<b>15.09%</b>	
CD	75	105	64	66	84	65	-22.62%	
ECO	144	147	174	183	189	246	30.16%	
EDU				0	7	1	-85.71%	
GEO	0	0	102	72	114	120	5.26%	
LWE	28	44	48	44	40	12	-70.00%	
PAR								
PLS	189	222	222	135	204	84	-58.82%	
PSY	225	222	219	264	287	366	27.53%	
SDC	10	6	8.5	6	0	0	0.00%	
SOC	294	237	120	123	87	192	120.69%	
SWK	4	4	6	9	4	11	175.00%	
<b>Social Science</b>	<b>969</b>	<b>987</b>	<b>963.5</b>	<b>902</b>	<b>1016</b>	<b>1097</b>	<b>7.97%</b>	
AUT	8	0	0	0	4	0	-100.00%	
EET	0	0	0	0	0	0	0.00%	
ITA				0	6	14	133.33%	
ITPD				0	21	13	-38.10%	
MFG	1	0	0	0	1	0	0.00%	
<b>Technical</b>	<b>9</b>	<b>0</b>	<b>0</b>	<b>0</b>	<b>32</b>	<b>27</b>	<b>-15.63%</b>	

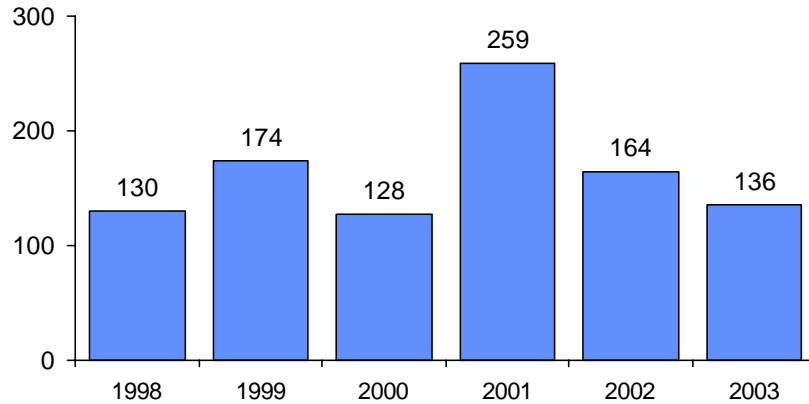


## Summer Credit and Contact Hours

### Cadillac Campus

	1998	1999	2000	2001	2002	2003	% Change
CIS	0	0	0	0	0	0	0.00%
OIS	0	0	0	0	0	0	0.00%
<b>Business</b>	<b>0</b>	<b>0</b>	<b>0</b>	<b>0</b>	<b>0</b>	<b>0</b>	<b>0.00%</b>
ENG	0	0	0	52	62	0	-100.00%
<b>Communication</b>	<b>0</b>	<b>0</b>	<b>0</b>	<b>52</b>	<b>62</b>	<b>0</b>	<b>-100.00%</b>
HST	42	39	0	64	0	0	0.00%
PHL	0	21	0	0	39	21	-46.15%
<b>Humanities</b>	<b>42</b>	<b>60</b>	<b>0</b>	<b>64</b>	<b>39</b>	<b>21</b>	<b>-46.15%</b>
MTH	28	36	44	56	24	76	216.67%
<b>Math/Science</b>	<b>28</b>	<b>36</b>	<b>44</b>	<b>56</b>	<b>24</b>	<b>76</b>	<b>216.67%</b>
PLS	18	27	48	30	0	0	0.00%
PSY	21	51	18	33	0	0	0.00%
SOC	21	0	18	24	39	39	0.00%
<b>Social Science</b>	<b>60</b>	<b>78</b>	<b>84</b>	<b>87</b>	<b>39</b>	<b>39</b>	<b>0.00%</b>
<b>NMC Cadillac Campus</b>	<b>130</b>	<b>174</b>	<b>128</b>	<b>259</b>	<b>164</b>	<b>136</b>	<b>-17.07%</b>

### Cadillac Contact Hours



### Cadillac Headcount

