

What You Made POSSIBLE



NORTHWESTERN MICHIGAN COLLEGE
FOUNDATION

(July 2016 - June 2021)

CAMPAIGN
RESULTS

BE WHAT'S
POSSIBLE

THE CAMPAIGN FOR NMC

You Made Education Possible!

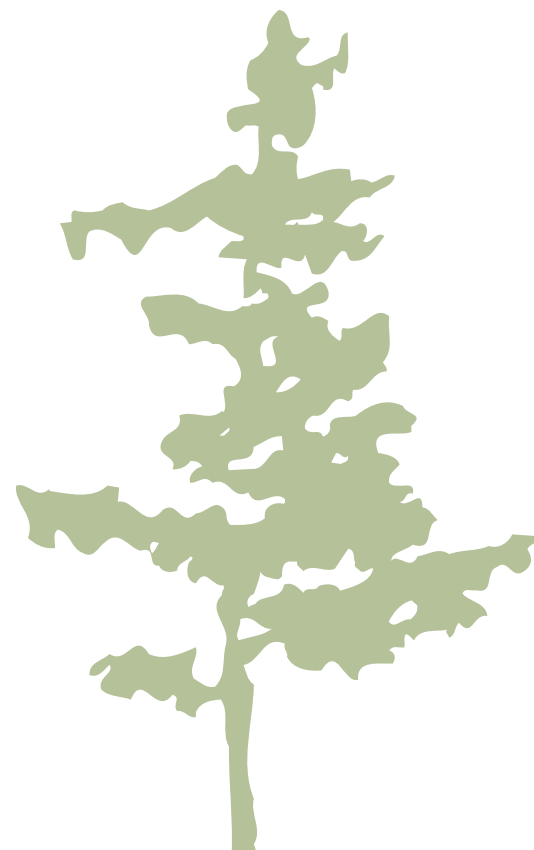
BE WHAT'S
POSSIBLE
THE CAMPAIGN FOR NMC

Possible is the difference between just keeping up and **rising to the top.**

Possible turns **opportunities into reality.**

You were called to Be What's Possible for NMC.

And **you answered.**



Thanks to your participation in NMC's first comprehensive campaign, more students will pursue their dreams, more leaders will innovate, and more knowledge will be shared. You are providing the educational opportunities that change lives. You are driving the economy in our region. You are solving emerging problems and preparing for future challenges.

You're receiving this report because of your support for NMC during the Be What's Possible campaign. Together, you gave \$40.3 million dollars, far exceeding the goal of \$35 million. Enjoy reading more about the impact of your support on NMC, its students, and our community.



Thank you and congratulations!

TECHNOLOGY LABORATORY

Table of Contents

6	The Fund for NMC and Scholarships
11	Program and Facility Support
16	Your Impact
20	Foundation Board
22	Campaign Steering Committee and Foundation Staff



Thank you for

your support of The Fund for NMC and Scholarships



Your support created 64 new scholarship funds. Each year more students will have opportunities at NMC that they wouldn't otherwise have had. Sharing their gratitude and thanks, students consistently express how critical it is to receive your scholarship support.

Most NMC students balance the expectations of going to school with working and caring for others. Though scholarships help a great deal, sometimes students need additional support, and this became especially clear throughout the pandemic.

From working on the front lines, to dealing with business shut-downs and childcare issues, NMC students faced huge challenges, all while trying to stay in school.

Without this scholarship, the idea of college
was almost impossible for me. ~Molly



You made it possible to support students with books, housing, technology, and other necessities by supporting the greatest needs of the college with your gifts to The Fund for NMC.

NMC students are grateful for your support, and they look forward to a time when they will be able to pay it forward.

You Helped Celeste Stay in School

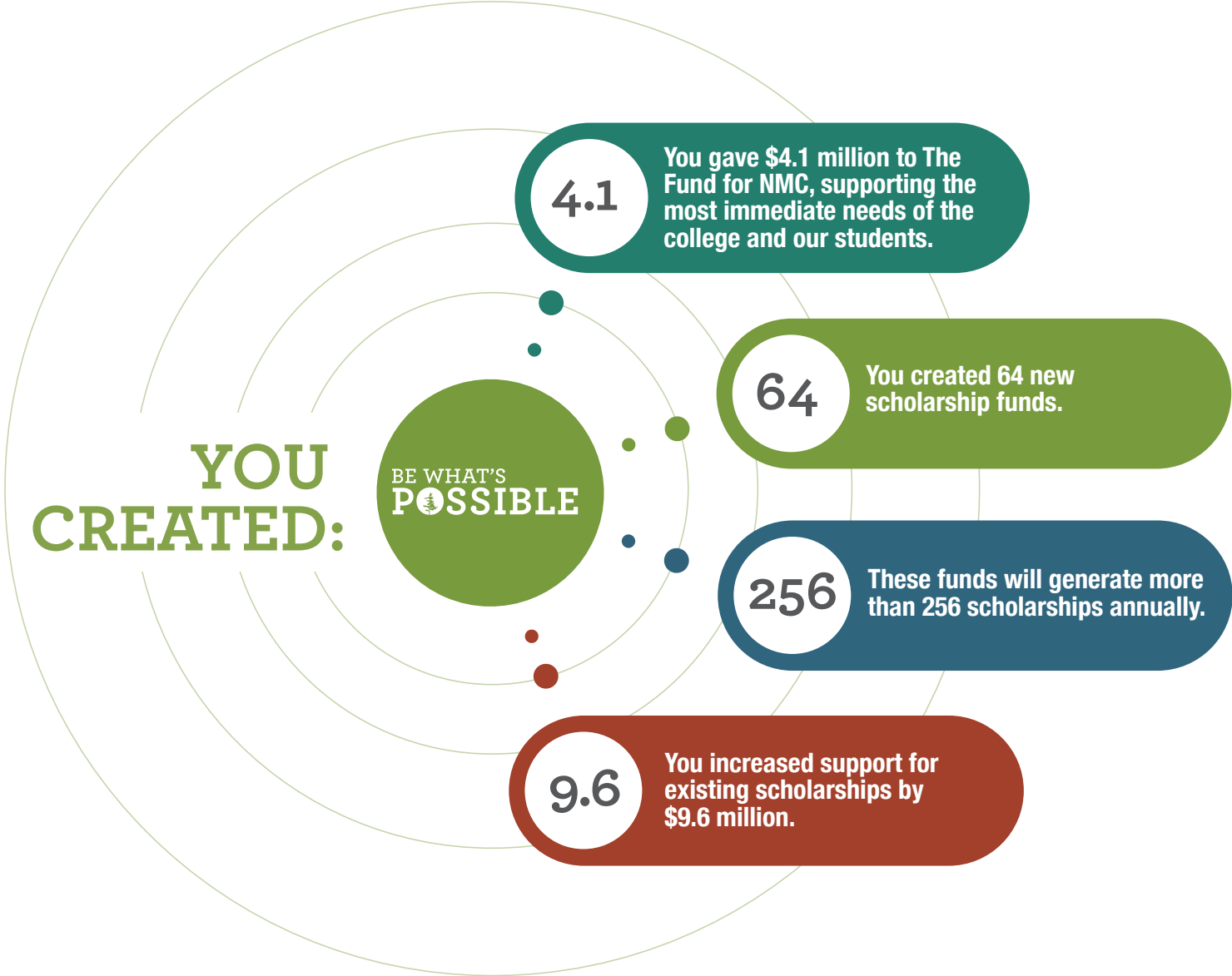
In early 2020, Celeste was already a student at NMC, commuting from Cadillac. Balancing school, work, and motherhood was challenging, but she was energized by the future she saw for herself and her children through her NMC education.

When a change in her housing and the pandemic both hit at the same time, Celeste faced tremendous obstacles. Would she need to leave school? Where could she find housing for her family and keep her kids safe and in school?

Because of your support, NMC had the resources to help Celeste find a way forward without giving up her future. The emergency support she received helped secure long-term housing for her family.

Your support of The Fund for NMC means that the college has the resources to meet the greatest immediate needs of students and of the college.

Whether it's wi-fi hot spots to be used by students who lack internet access at home or emergency support for books, materials, and other needs, your gifts to The Fund for NMC ensure that promising students like Celeste do not have to abandon their studies.



Scholarships are more than just money to pay for school. They are an opportunity for a person to have a bright future. ~Leo

Your Support for Scholarships Paved the Way for Paul

Paul had good grades in high school, but he wasn't exactly sure what he wanted to pursue in college, and he knew he needed to gain some more confidence.

Thanks to you, Paul received scholarships that made college affordable. Through his NMC experience, Paul became more self-assured, participating in leadership groups such as the award-winning NMC chapter of Phi Theta Kappa, the national leadership association for community college students.

With his NMC degree and two certificates in hand, Paul has transferred on to complete his education, and he's even considering graduate school.

"Having scholarship support made so many things possible for me," shared Paul. "I'm so grateful to all the donors who helped me get where I am."



Thank you for your support of Programs and Facilities



An expanded Dennos Museum Center. The Timothy J. Nelson Innovation Center. New initiatives and the growth of many programs throughout the college.

This is what you built through the Be What's Possible campaign.

Your support has propelled NMC forward with facilities to meet the needs of students and our community—now and into the future.

Your program support brought experiential learning into more classrooms, helped make equipment improvements, and provided staff support and training. You helped classes and programs adapt to changes during the pandemic.

You have kept innovation moving forward for our students and for our whole community.

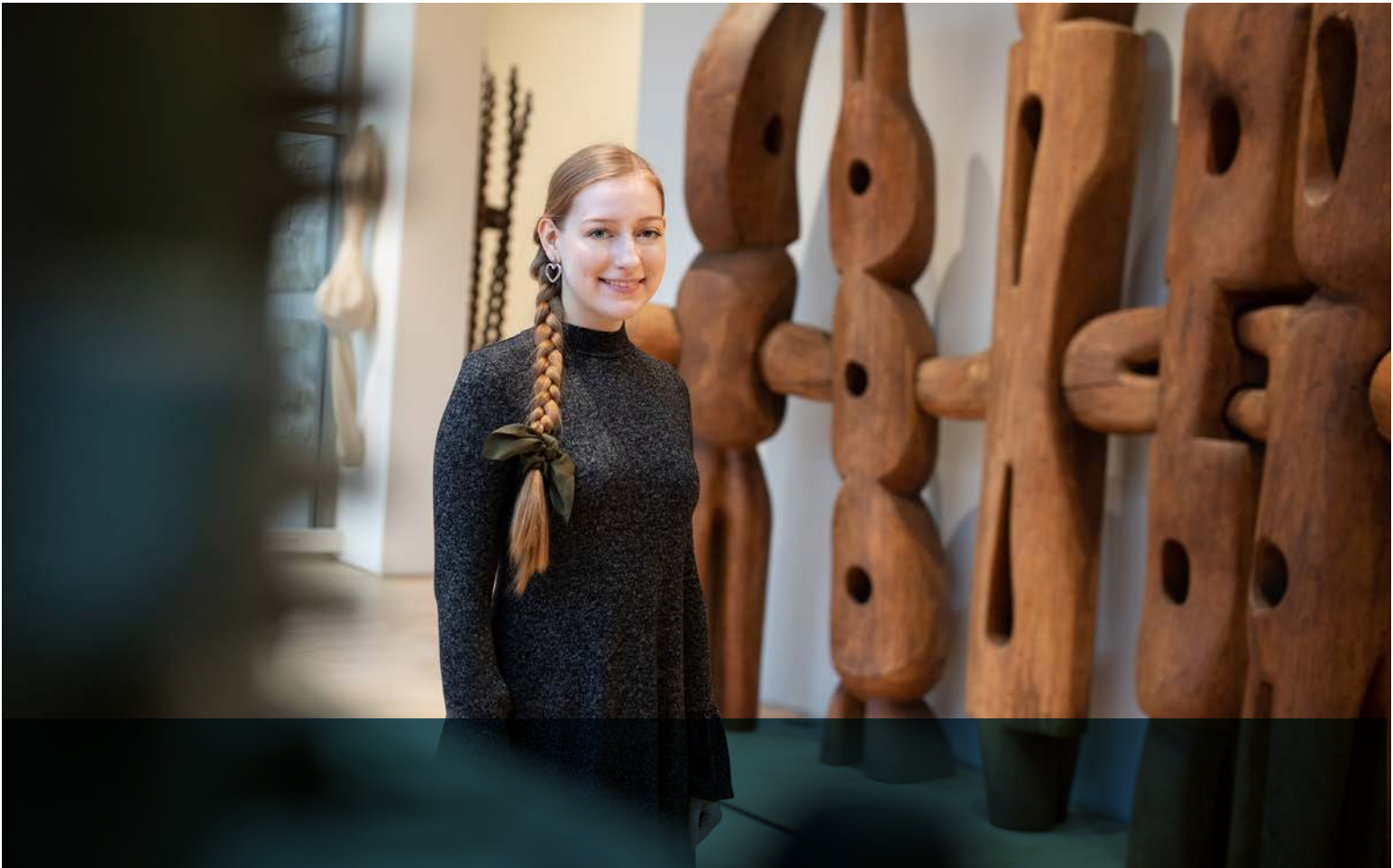


Your Support Transformed the Dennos Museum Center

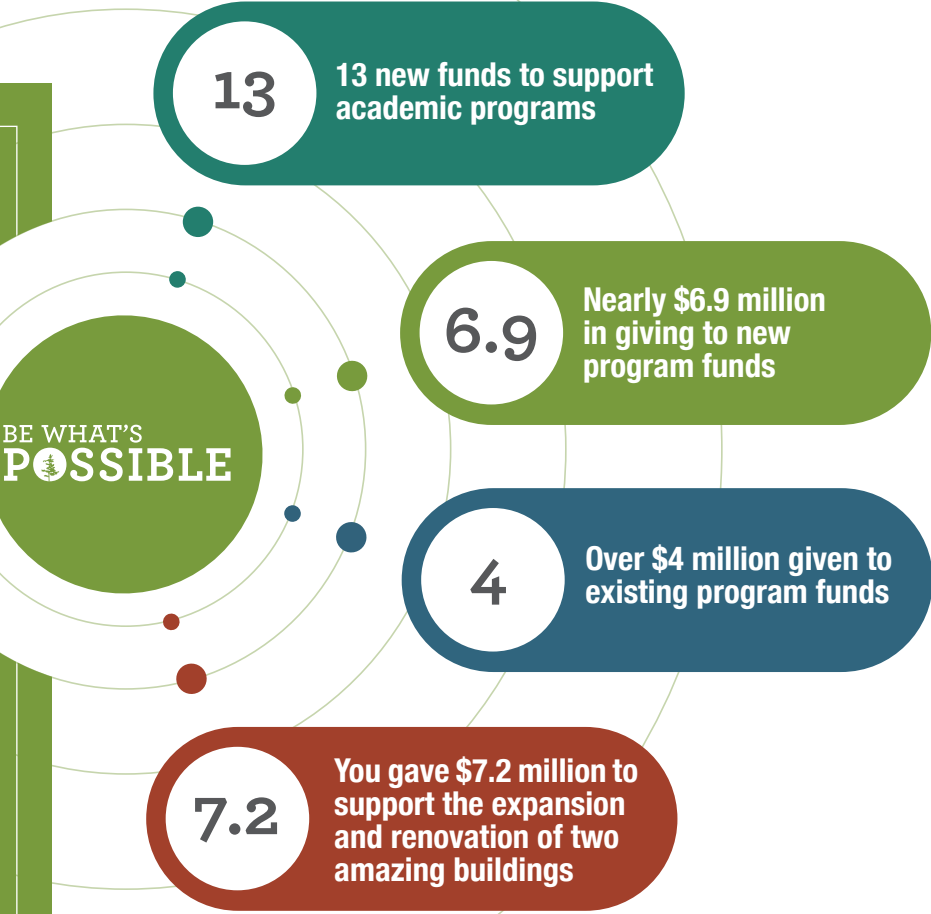
The expansion of spaces at the Dennos Museum is nothing short of extraordinary thanks to your donations. The addition of new gallery spaces means that much more of the permanent collection can be displayed and enjoyed by all.

Thanks to you, there is more space for teachers to bring students, for NMC students to use the resources, and for our whole community to enjoy art. Expanded learning spaces, instrument storage, and a re-configured loading dock mean that there is better storage, both for NMC ensembles and also for visiting performers.

Whenever you visit the Dennos Museum or attend a concert in the Milliken Auditorium, you can feel proud that you positioned this amazing facility for the good of our whole community.



Thank you so much for believing in me and the students at NMC and for being a donor. You are touching many lives and encouraging education.
~Brittney



Programs Thrived Because of You

Through the Be What's Possible campaign, you supported the programs and spaces that you care about most.

For example, your support of the Great Lakes Water Studies Institute enabled equipment upgrades and refurbishment, staffing support, and innovations in programming that will have a lasting effect on the quality of the education delivered to NMC students.

Your support also led to improvements in internship and job placement efforts, particularly critical for students today.

For all of NMC's programs, your support means a brighter future.



Donations like this remind me of the generosity that exists out there and that people support and believe in what I'm doing.
~Daniel



Your Impact



Little did we know what challenges would lie ahead on the path of this campaign. Achieving the success of this campaign would be extraordinary anytime, but you achieved this success under the worst economic downturn since the Great Depression and the worst health crisis since 1918. That is extraordinary.

Through it all, you shared stories and inspiration. You shared your belief in education and philanthropy. Through the Be What's Possible campaign, you demonstrated your appreciation and dedication, honoring a family member with your philanthropy, or a program where you began your own educational journey. You honored pivotal events and people in your life—a medical experience, a love for food or flight, or an appreciation of our Great Lakes and their impact on our entire community.

The comprehensive nature of the Be What's Possible campaign meant that you—our donors and friends—were able to partner your interests with your philanthropy, by showing your support for NMC and our community in unprecedented ways.

You created the success of the Be What's Possible campaign. Together, we celebrate those achievements, which will have a long-lasting impact on our college, our students, and our community.

Nick Nissley, Ed.D.
President,
Northwestern Michigan College

Rebecca Teahen, CFRE
Associate Vice President, Resource Development
Executive Director, NMC Foundation



Your Support, Your Participation, Your Way

Every program you were part of during the Be What's Possible campaign has experienced a positive impact.

Your participation in events like A Taste of Success and other culinary activities, memberships and attendance at Dennon events, participation in the International Affairs Forum, and so many other ways, all provided much-needed support for our students and for NMC.



You Kept WNMC's Airwaves Alive

Listener support is critical to community radio stations, and your support for WNMC made the difference through the Be What's Possible campaign.

Your annual support is always essential, but during the campaign, you did even more!

You supported WNMC's move to the Timothy J. Nelson Innovation Center, and secured equipment upgrades that got the station back on the air during the pandemic.

Your regular support, whether philanthropic or as a volunteer, has meant that WNMC's programming has stayed creative and energized for our whole community. Thank You!

You Brought the World to Our Doorstep

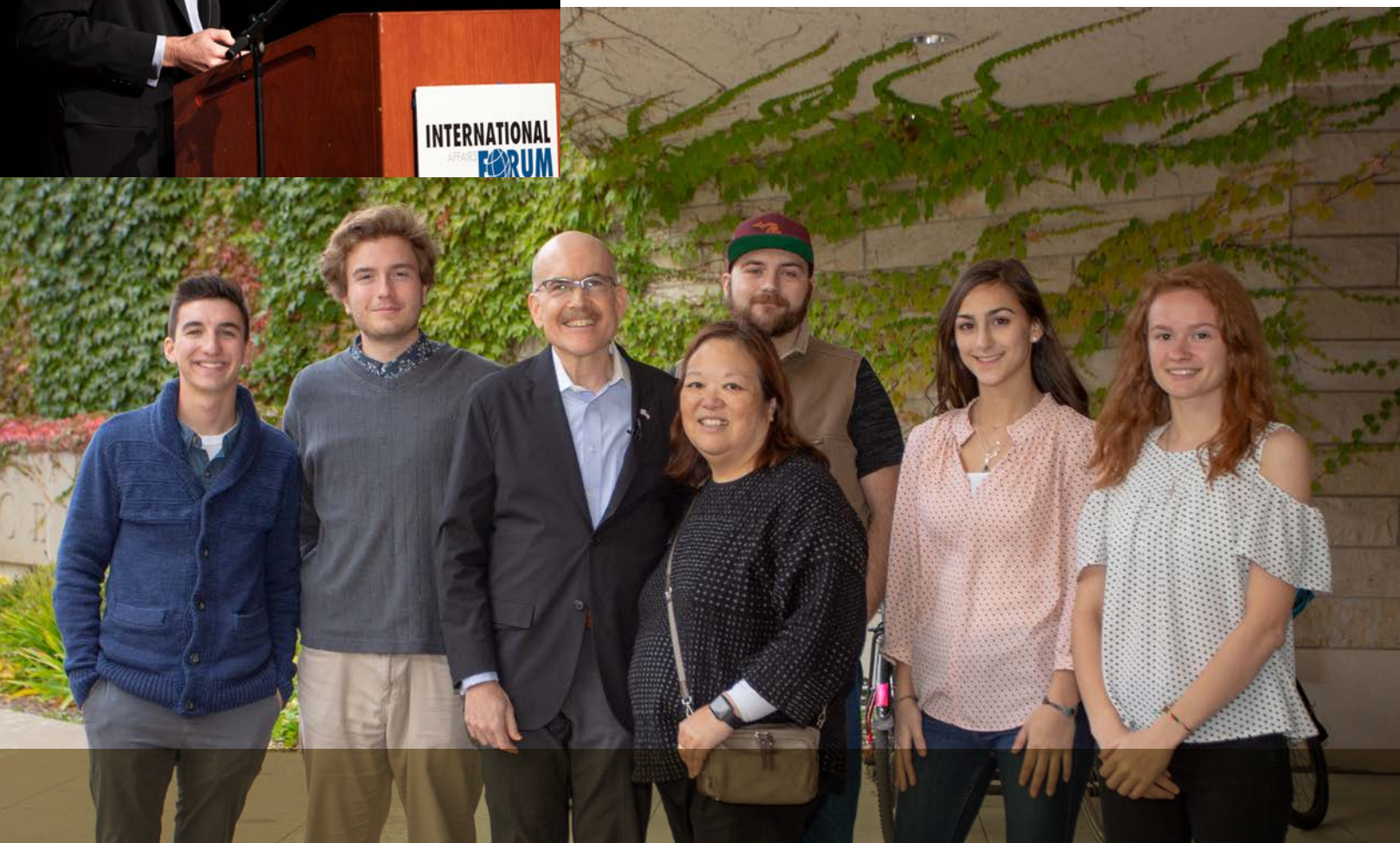
Through NMC's International Affairs Forum, you kept our community informed by bringing speakers on the world's most pressing issues to the people of our region.

Thanks to you, when the coronavirus hit, the IAF series quickly moved its programming online. This allowed IAF to continue bringing leading international experts to share their knowledge with our community.

Your continued support, combined with the experience and ingenuity developed over the last two years, have enabled the IAF programming to continue to evolve, partnering with other organizations and bringing diversity of world views and real-life international experiences to students through our IAF Student Leadership Team.



As our world rapidly changes, our community needs to hear from leading experts—thank you for making it possible.



Thanks a Million!



- Scholarships \$17,754,486
- The Fund for NMC \$4,165,783
- Facilities \$7,246,216
- Program Support \$11,069,303



5,203 Donors

Over 17,800 Donations to NMC

More than \$40.3 million raised for students, NMC, and our community



NMC Foundation
BOARD

Fran Gingras, Chair
Jayne Mohr, First Vice-Chair
Nick Nissley, Second Vice-Chair
Debbie Edson, Secretary
Steve Fisher, Treasurer
Rebecca Teahen, Executive Director

Nat Adamson
Suzanne Allen
Lorraine Beers
Barb Benson
Linda Berlin (Staff)
Doug Bishop (Trustee)
Cheryl Bloomquist (Faculty)
Chris Bott (Trustee)
Chris Branson
Bob Brick
Bruce Byl
Kerm Campbell
Don Coe
Bill Donberg
Chris Lamb
Rachel Johnson (Trustee)
Mark Lundmark
Eleanor Lynn
Amber Marsh (Student)
Bill Marsh, Jr.
Paul Maurer
Chris Millward
Diana Milock
Marty Oleson
Steve Rice (Faculty)

Susan Sheldon
Dave Shooltz
Pat Warner
Jim Weigand
Timothy Young
Al Zelinski
Nancy Zimmer



Soho by Malcolm Myers, acrylic on canvas, 1980
Gift of Marilyn Myers in memory of Malcolm H. Myers

Honorary and Emeritus Board Members

HONORARY MEMBERS

Diana Huckle
Jim Huckle

EMERITUS MEMBERS

Bonnie S. Alfonso
George W. Anderson*
Robert M. Andrews
James J. Beckett* (Secretary Emeritus)
Robert M. Boeve
James Brown, Jr.*
John Dancer
Robert L. Goff
Don A. Good
David L. Gray (Treasurer Emeritus)
Kathleen Guy
Thomas C. Hall*
James W. Hook
Walter J. Hooper
Jean Howard
Susanne M. Janis

Thomas C. Jones
Charles B. Judson* (Chair Emeritus)
Barbara J. Kausler
Randall J. Kiessel
Kenneth P. Kleinrichert, Sr.
Douglas E. Linder*
Terry Lobdell
James D. MacInnes
Terence Malone*
Patrick J. McCafferty*
Robert R. McDonald
George A. McManus
Timothy J. Nelson
Gail M. Nugent
Shirley S. Okerstrom*
Gerald E. Oleson, Jr.
Helen C. Osterlin*
Timothy G. Quinn
Richard L. Redmond Jr.
Barbara A. Smith
Edward C. Walker

* Deceased



Listing as of January 26, 2022

CAMPAIGN STEERING COMMITTEE

Bruce L. Byl, co-chair
Susie M Janis, co-chair

James J. Beckett*
Barbara F. Benson
Ross A. Biederman
J. Kermit Campbell
Casey G. Cowell
Debra J. Edson
Francis J. Gingras
Mark A. Lundmark
Bill F. Marsh, Jr.

Diana Milock
Jayne H. Mohr
Timothy J. Nelson
Nick Nissley
Mark L. Ribel
Barbara A. Smith
Rebecca M. Teahen

PUBLIC PHASE LEADERSHIP

Joan Berg
Lindsey Dickinson
Bill F. Marsh, Jr.
Hettie Molvang
Laura Oblinger
Ruthy Ransom

* Deceased



NMC Foundation STAFF

Rebecca Teahen // Associate Vice President,
Resource Development &
Executive Director, NMC Foundation

Lisa Cooper // Campaign Assistant

Bill Czyzyk // Database &
Prospect Research Specialist

Amanda Gower // Executive Assistant

Roger Heeres // Development Assistant

Jennifer Hricik // Leadership Giving Specialist

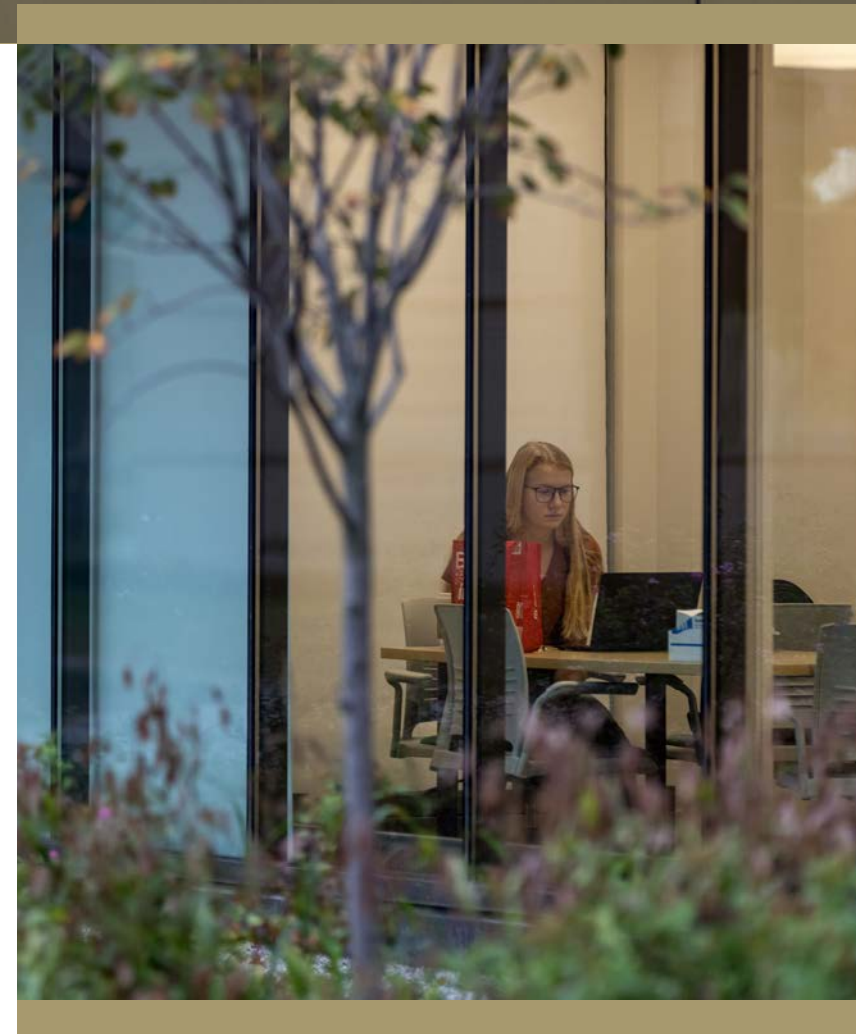
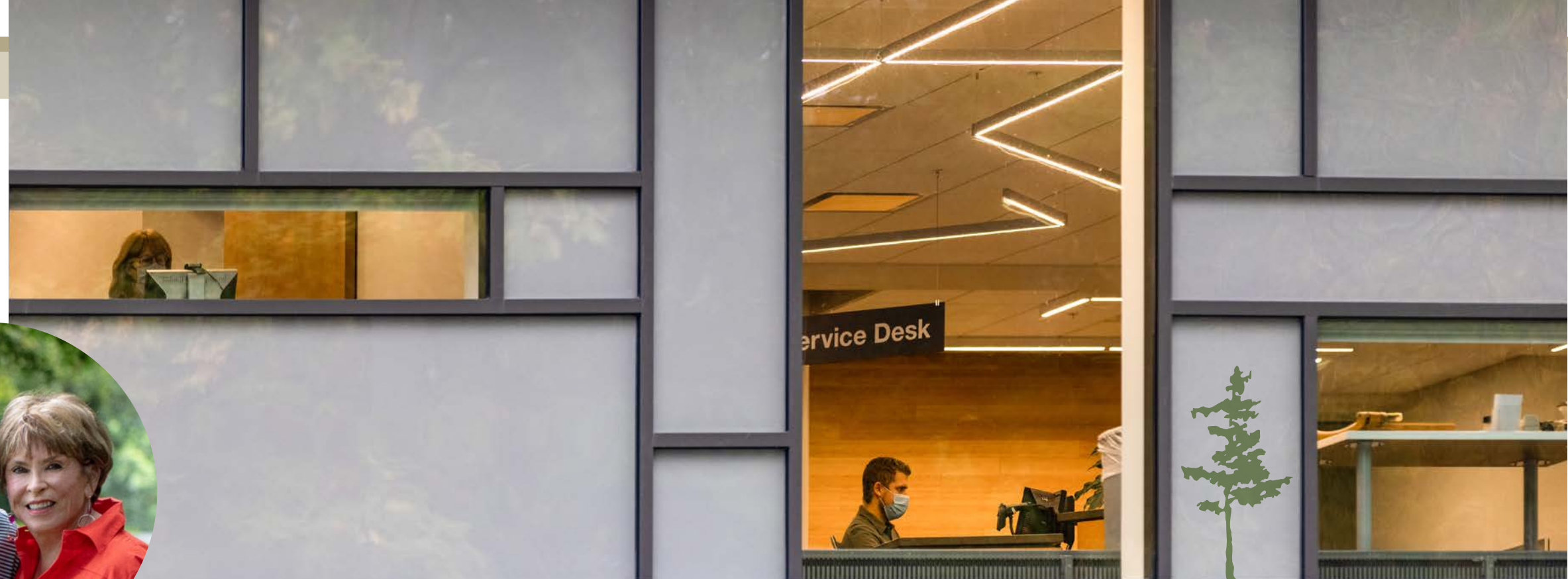
Katharine Marvin // Director of Annual Giving

Carly McCall // Campaign Coordinator

Paris Morse // Director of Development

Jill Prior // Annual Giving Specialist

Paul Schoppe // Financial Assistant



Gifts such as these
are a massive help
to us as students,
and I am thankful
to be a part of
an institution
that puts such a
priority on helping
others succeed.
~Matthew



BE WHAT'S
POSSIBLE
THE CAMPAIGN FOR NMC

nmc.edu/foundation (231) 995-1021
foundation@nmc.edu 1701 E Front St, Traverse City, MI 49686

PRINT INFORMATION
FSC Certified Stock
Sustainable Forestry Initiative SFI
Certified Sourcing
EarthChoice Product Line
10% post-consumer waste
Acid Free