



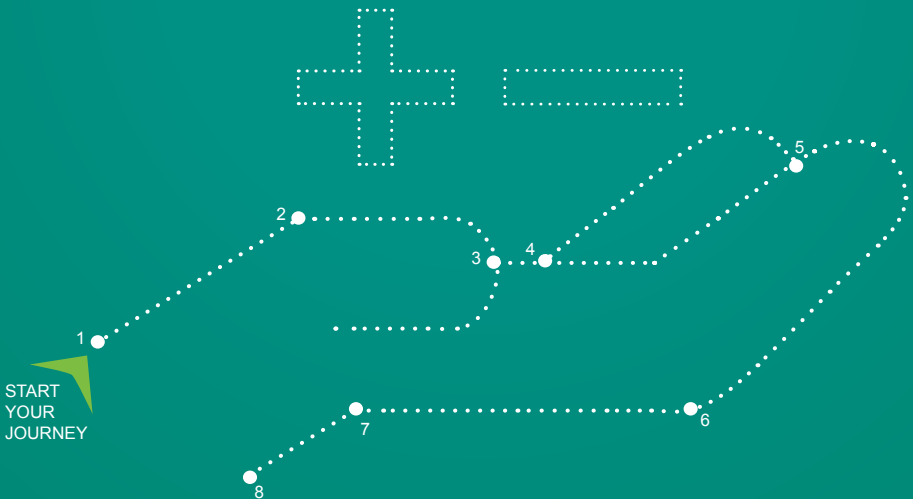
Northwestern  
Michigan College



# Your best value

A head-to-head  
comparison of:

- Dual Enrollment
- Early College
- AP Courses



#### NON-DISCRIMINATION POLICY NOTICE

Northwestern Michigan College does not discriminate in admission, campus activities, education, employment, housing, public accommodation or public service on the basis of age, color, creed, disability, gender identity/expression, handicap, height, marital or familial status, national origin, political affiliation, race, religion, sex, sexual orientation, service in the military, veteran's status, weight,

➤ Connect with NMC.

## Course Comparison

	Dual Enrollment*	Early College**	AP courses
When can I start?	Usually junior year, sometimes earlier	Apply Fall sophomore year.	TBD by high school
What is the cost to me?	Free tuition for Grand Traverse County residents Discounted tuition for other residents	Free tuition for Grand Traverse County residents Discounted tuition for other residents	\$98 per AP course & fees to have scores released to colleges when applying
How much can I save?	\$3,540 Up to 10 NMC Courses	\$10,620	You pay per course and release of scores
How much credit can I earn?	Up to 10 college courses (30+ credits)	Associate degree (60 credits)	NMC and other schools have AP credit policies to grant credit for your AP scores based on results
Can I earn a certificate?	Yes	Yes	No
Will my credits transfer to a 4-year MI school?	The majority of NMC courses transfer as long as you pass with a minimum 2.0.	Associate degrees from NMC prepare you for acceptance to 4-year schools, including the University Center at NMC.	Depends on your exam score and transfer 4-year school or college.
How long does it take?	15 - week courses, some accelerated courses available (Fall or Spring semesters)	Classes begin junior year + 1 year after high school	Each AP course is a full high school year. Fall-Spring
Where will I take classes?	In-person, online, hybrid, livestream (some courses at your high school)	In-person, online, hybrid, livestream (may vary upon degree) (some courses at your high school)	In-person and some may be offered online

\*Contact Admissions for more details. (231) 995-1054 or [admissions@nmc.edu](mailto:admissions@nmc.edu)

\*\* Early College is a program for high school students within the Grand Traverse region and Wexford-Missaukee ISD to earn college credits and up to an associate degree by completing course work at their home high schools, at Northwest Ed Services (formerly TBAISD), or WMISD Career-Tech Centers, and on Northwestern Michigan College's campus. Participating students and parents will recognize significant tuition cost savings and be on a faster track to obtaining a college degree.